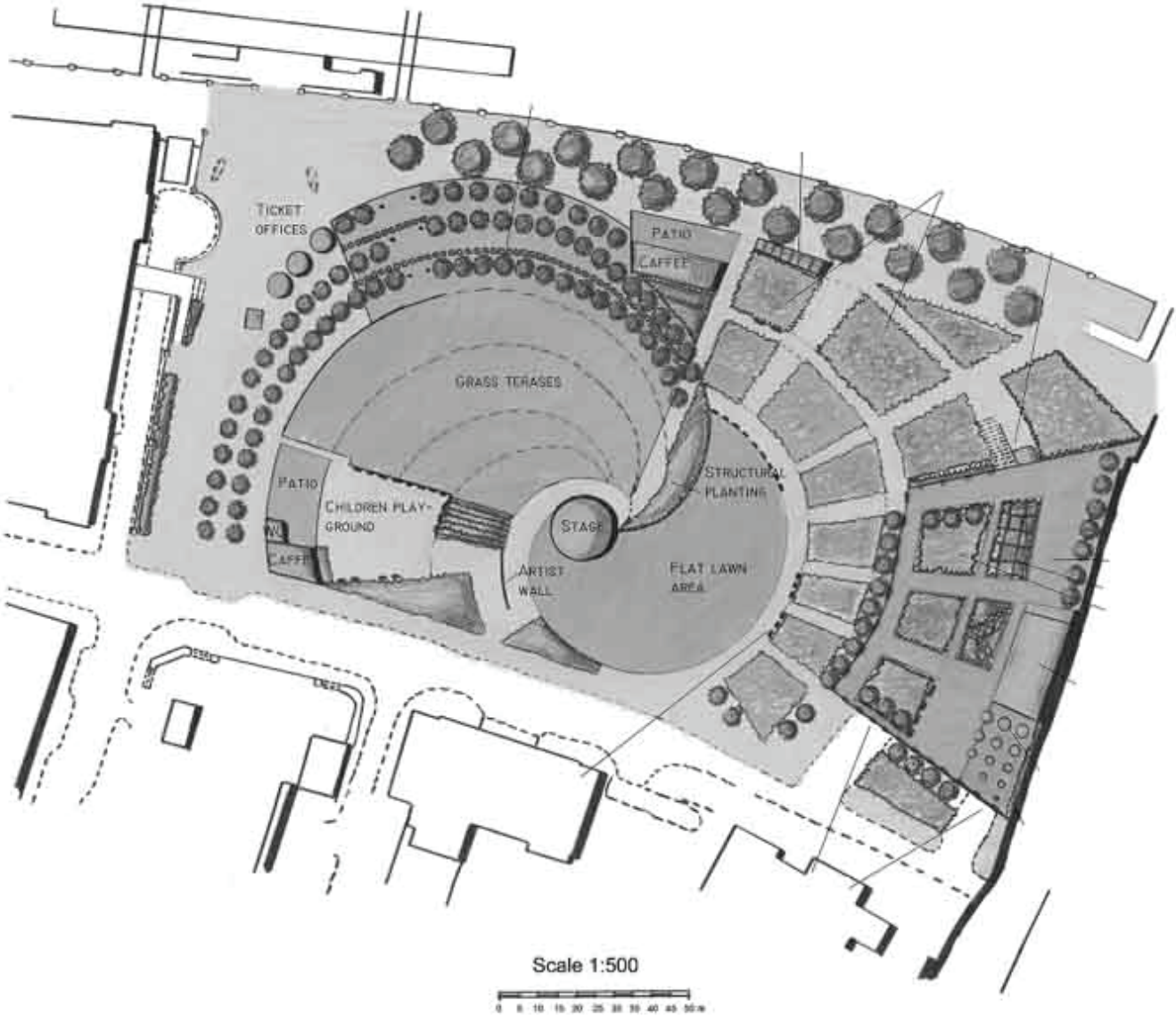


EDUCATIONAL JUBILEE GARDENS

Borisova design proposal for Ba Garden



Sections

Public park that services the community through education

The top section depicts a design for sheltered seating around a centralized fountain. This design is one possible outcome for seating specific to the Educational Jubilee Gardens.



Section through seating option

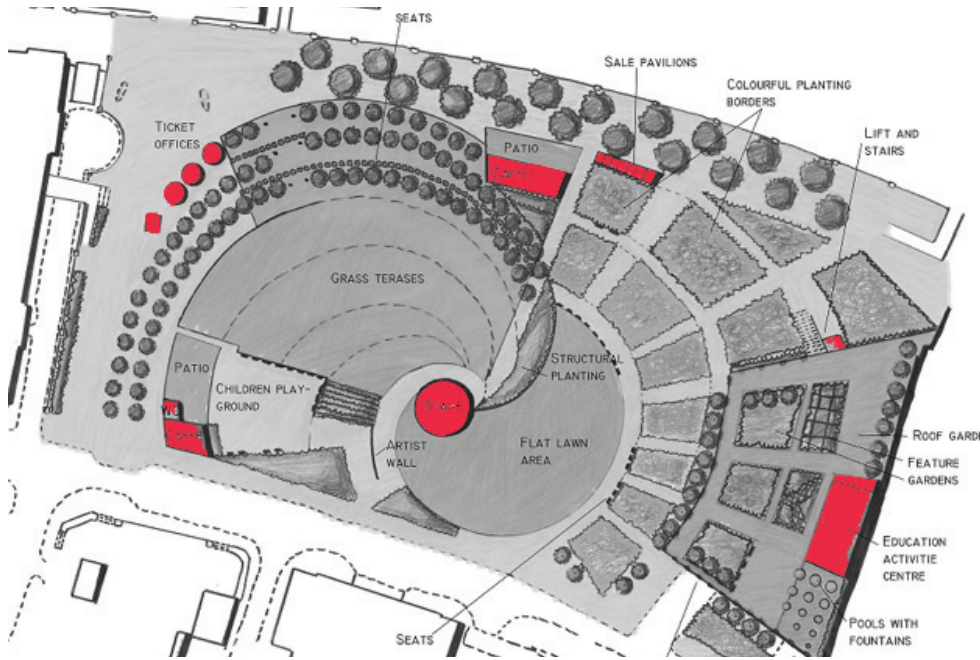
The below section shows a different more natural shelter. Here the built pathway gains shelter through the surrounding forestry. On the opposing side however, the land opens to a free area and multipurpose space.



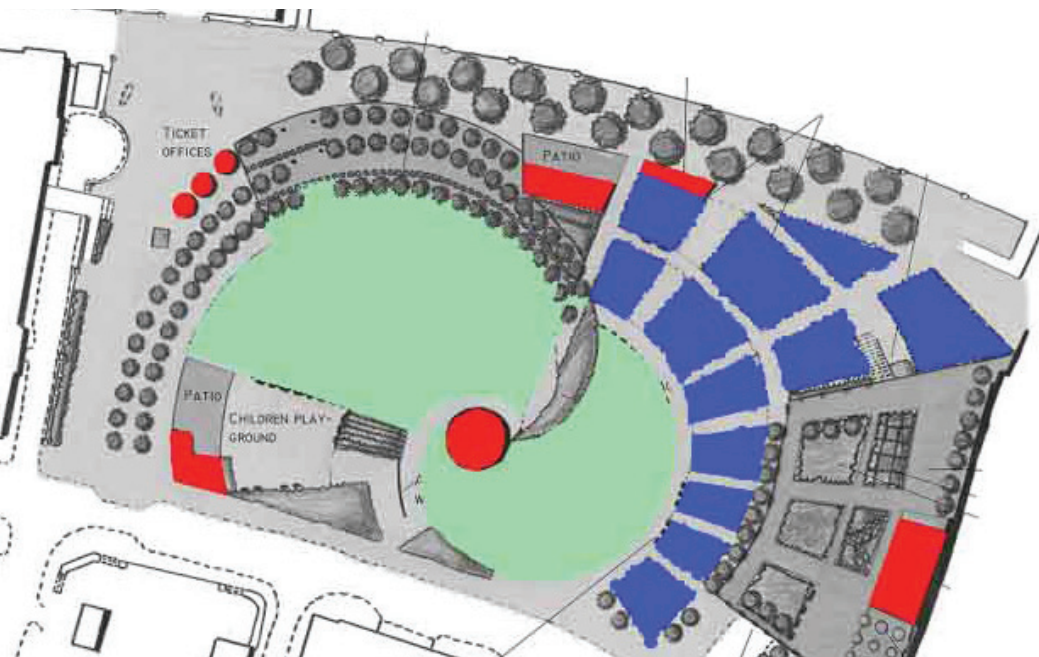
Section through open space

Analysis of Space

Built Environments vs. Natural Environments

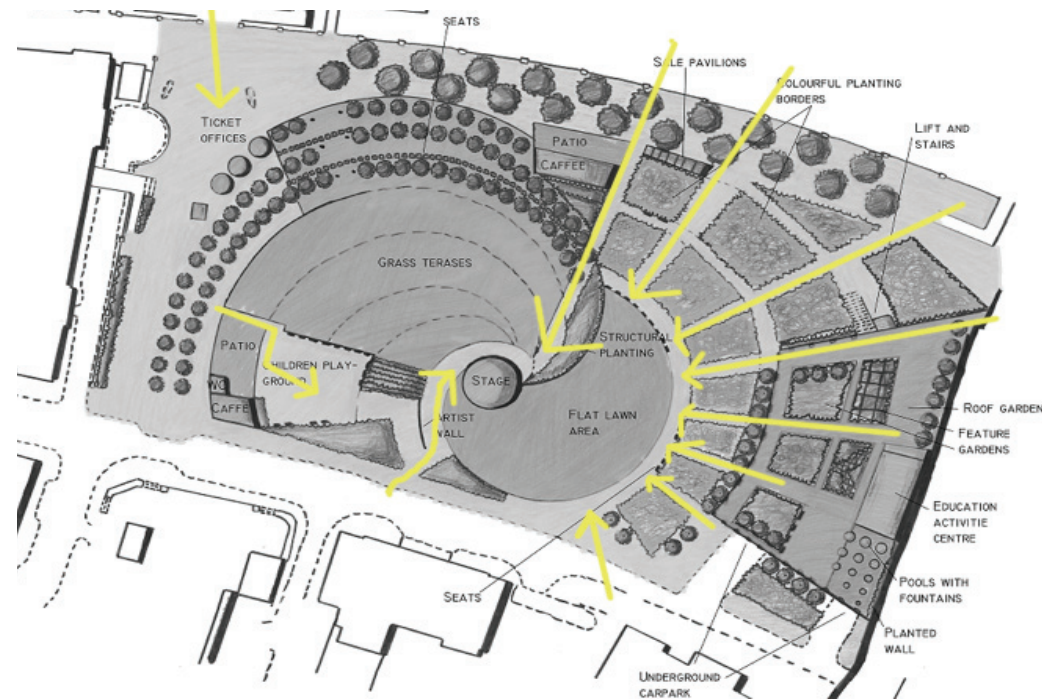
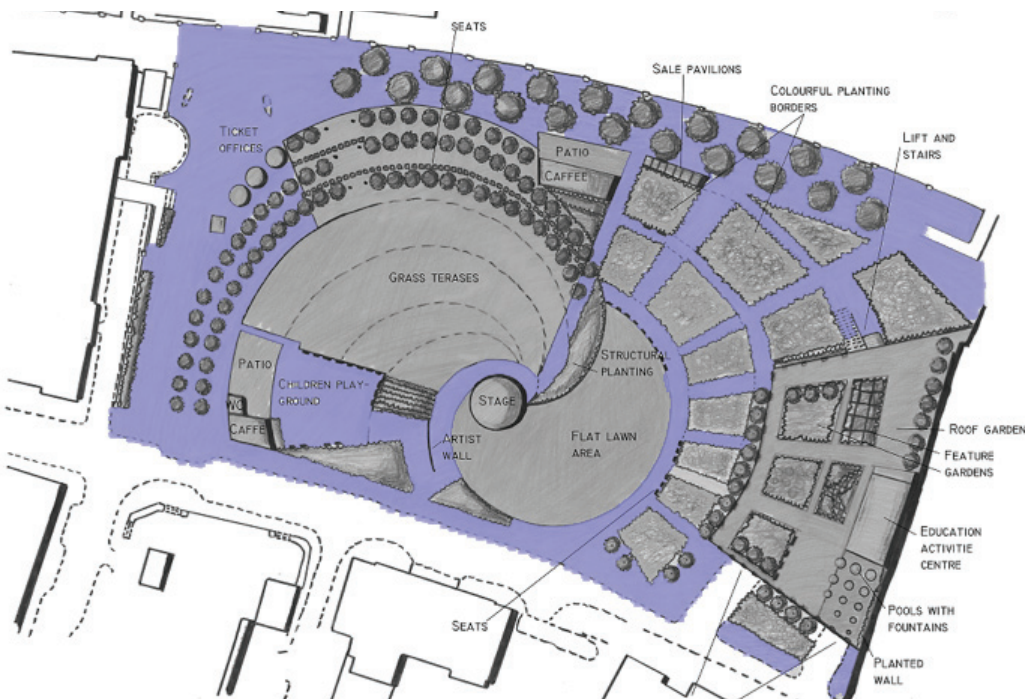


The analysis to the left depicts public, accessible spaces versus built, more private spaces. The private spaces are shown in red. Below that is a parti of the space. The red represents the built environments which are necessary and frequently visited.



The green begins to form the identity of the space and also represents the most used space. Here people are free to roam and move through space. The blue represents, although a still natural area, an area that is uninhabited by people. Here the pathways direct people through the space in a way where there is no need to cross over the natural space. The blue defines a built area that appears natural but is actually encased in a built environment.

Accessibility and Movement Through



What were the designers intentions? Is that how the space works?

The above images begin to layout the built pathways and in which direction people are suggested to move. Here the circulation throughout the park becomes centralized, as people are drawn toward the middle through a series of pathways encircling two semicircular grassy fields. The organization of these pathways does not interrupt the space and therefore it seems the designer was successful in her actions.

Sequence of Spaces Defined

Organization of Educational Park



- The diagram to the left shows the park's variety of spaces. These include a few main categories. The first is profit through shows. Spaces that developed from this need include the ticket offices, stage and showing area, a steeper lawn for slanted viewing, and a flat lawn for casual seating.

Another main space of this park includes income and profit. The spaces bring revenue for the park are nearby and include a cafe and patio and a cradle of sale booths.

The last main need is children. A bathroom, seating area, and patio are all provided for parents watching young ones interact with the playground. This layout includes a variety of interactive spaces.