

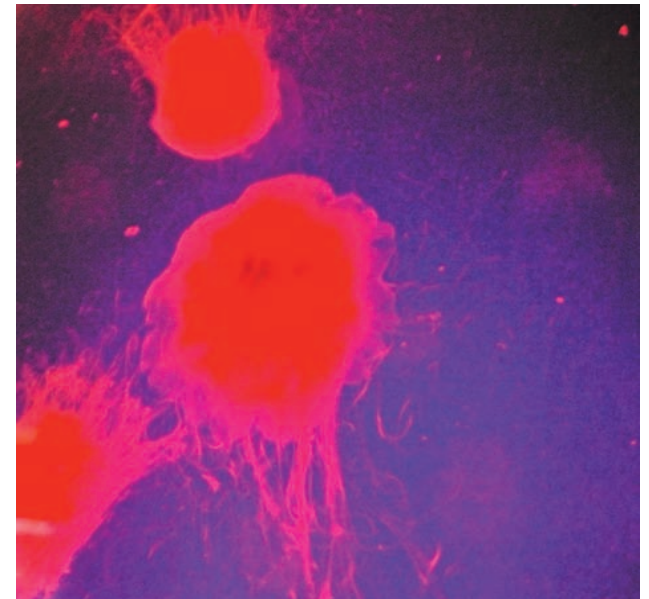
NEWPORT AQUARIUM

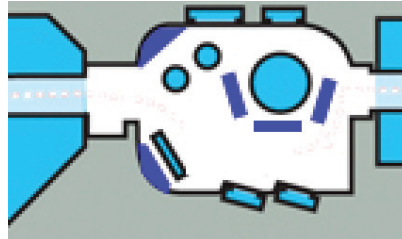
Jelly Fish Exhibit

The individual exhibit, the Jelly Fish room, appeals to me most. Although the walk through tunnels and other petting areas are well suited for interactive exhibits, something about the jelly fish room intrigues people of all ages.

This space seems to mimic the mind and lifestyle of a jellyfish. Viewers say the space is “Calming”, “Relaxing”, “Soothing”, and “nice to just sit and enjoy”.

The space itself has the same educational goals for all ages. People become aware that Jelly Fish are organisms too. They are self providing and live simply, pushing through the water like a heart beats.

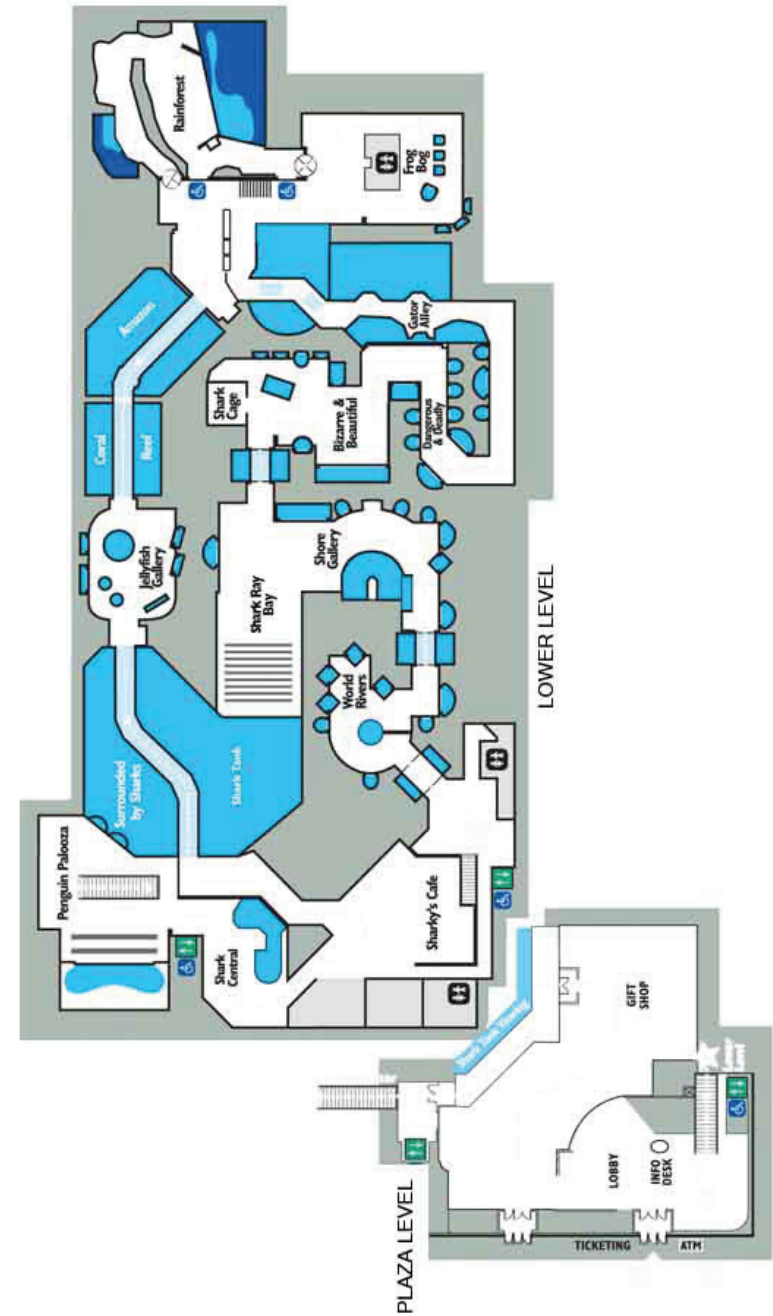




The Jelly Fish room location

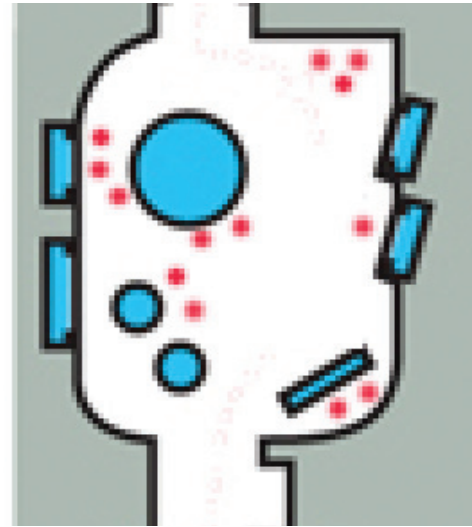
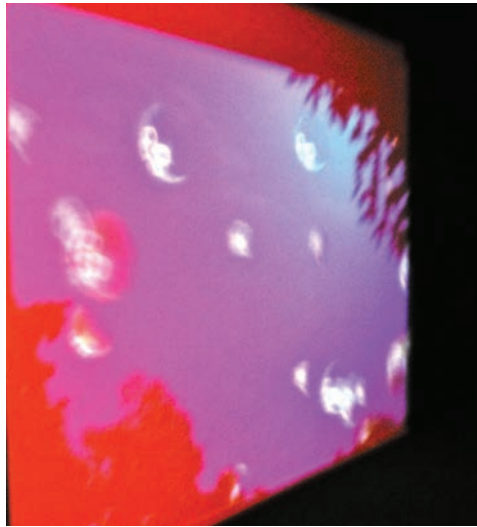
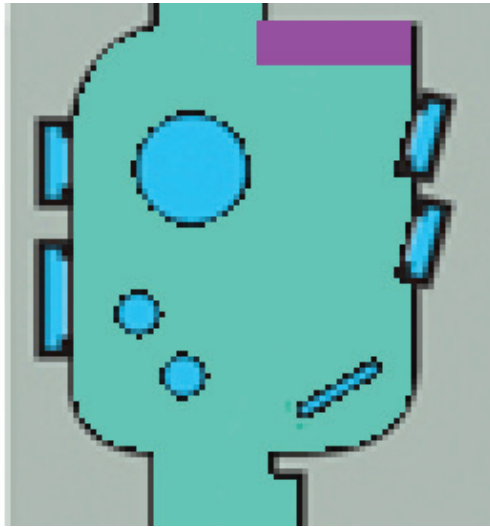
The Jelly Fish room is located near the end of the aquarium's spatial circulation plan. Within this space there is much more seating than available in others. This is because this space is meant for relaxation.

While other areas become narrow tunnels or shows, this space allows one to personalize the experience. Here one can reflect on inner thoughts and feel peace.



Analysis of Space within the Jelly Fish Exhibit

What do people do within the space?



Sitting and watching people within the Jelly Fish room interested me. Here a variety of actions occurred. Adults sat amongst the vast furniture option and stood against the tanks taking pictures and watching the colorful sea creatures.

Children however, played amongst the only interactive site within the room. To the older generation, this area became somewhat lost and in the background. The children however, crowded around waiting for their turn to move the jelly fish.

The diagram in green and purple shows the interactive space within the room. The red dots on the second image show the average flow of people throughout the space. Separating children from adults, children would be the three spots where the purple is.