



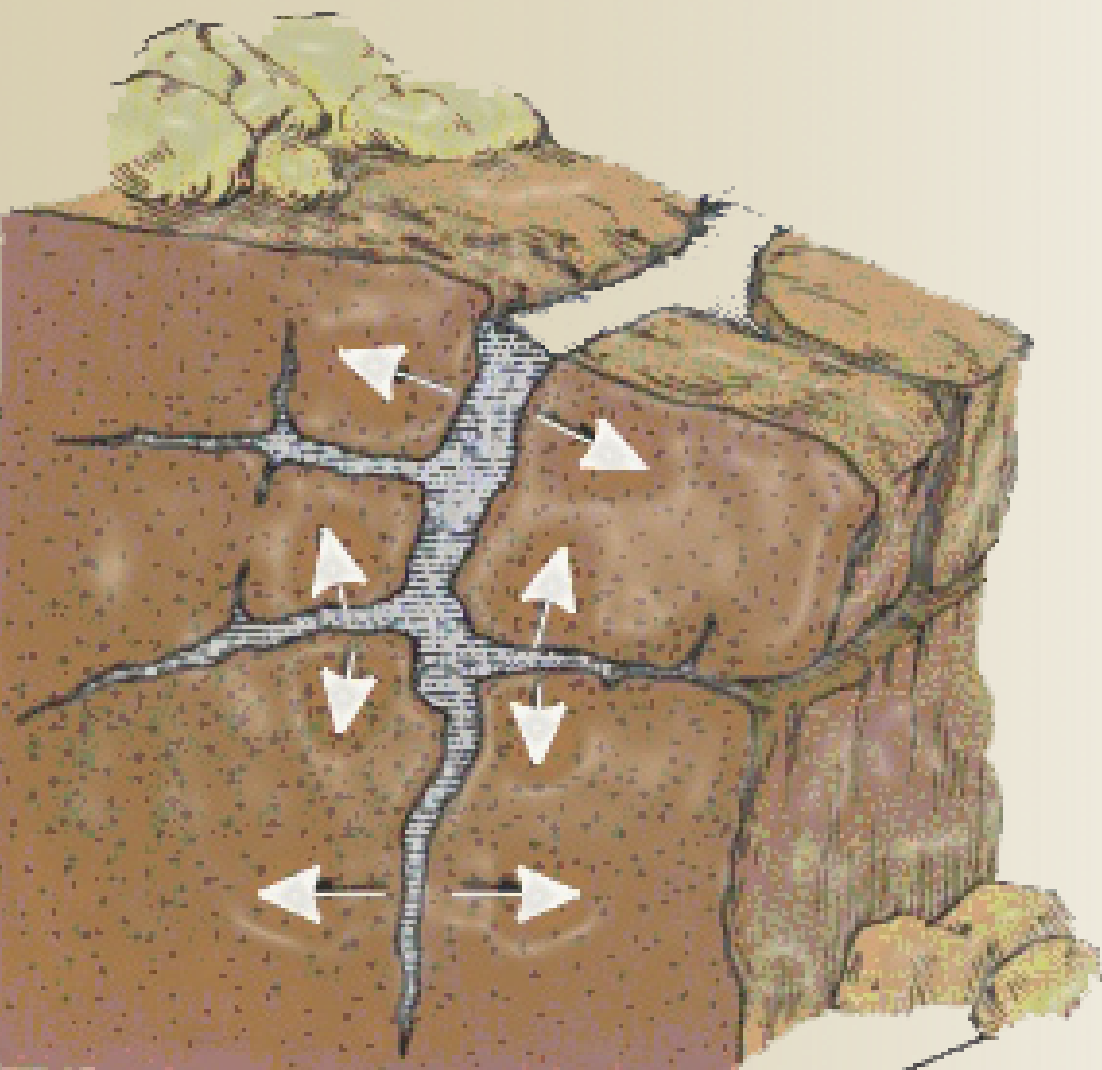
WELCOME TO THE
ROCK
REPOSITORY!

Hello there!

Here's what we're about...

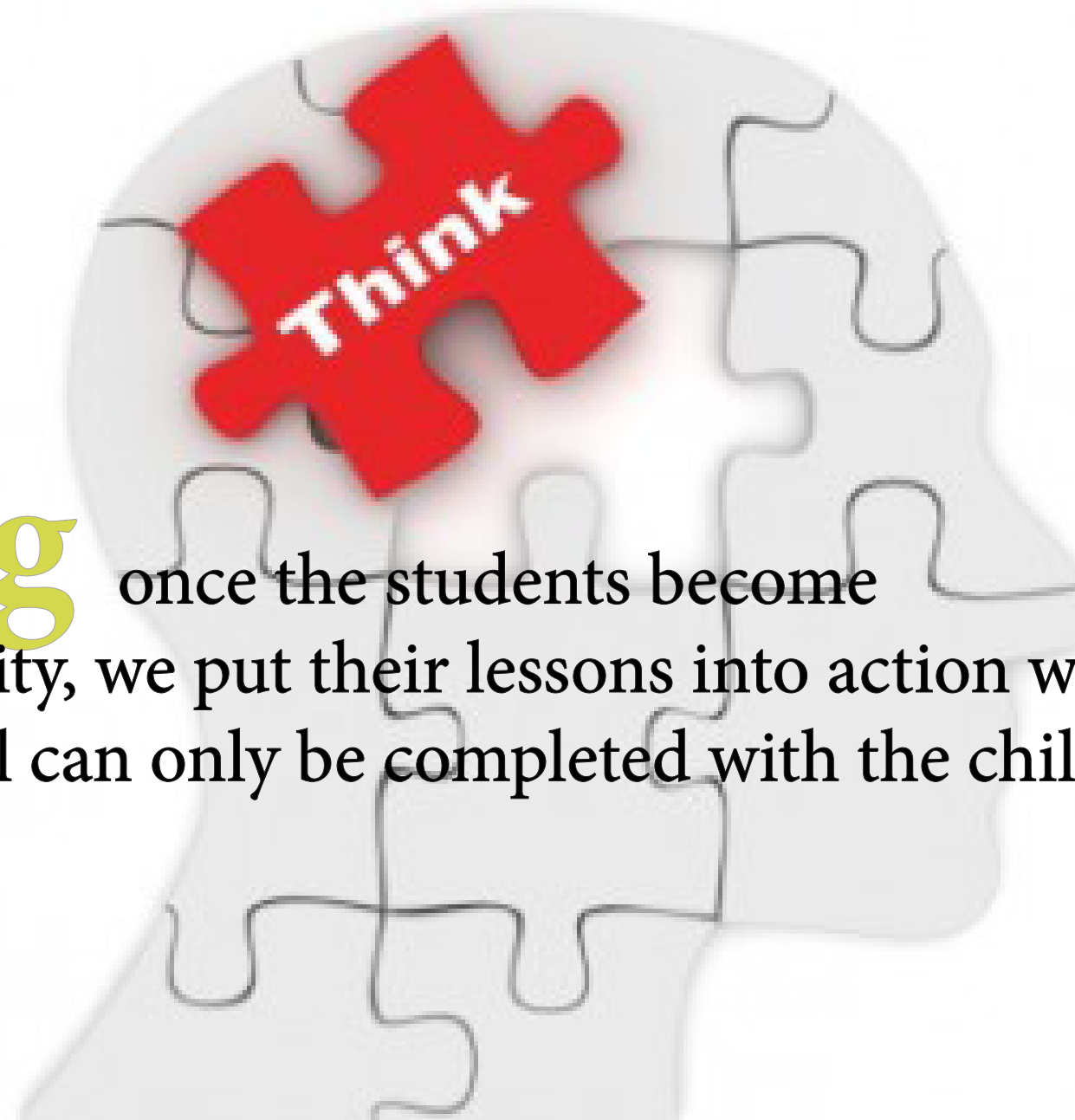
Rocks

the focus of this discovery center is to education children about aspects of earth they may not be exposed to on a daily base. We go back to roots of geology lessons and teach them what the ground they walk on is made of, and how it got to the stage it is today!



Reasoning

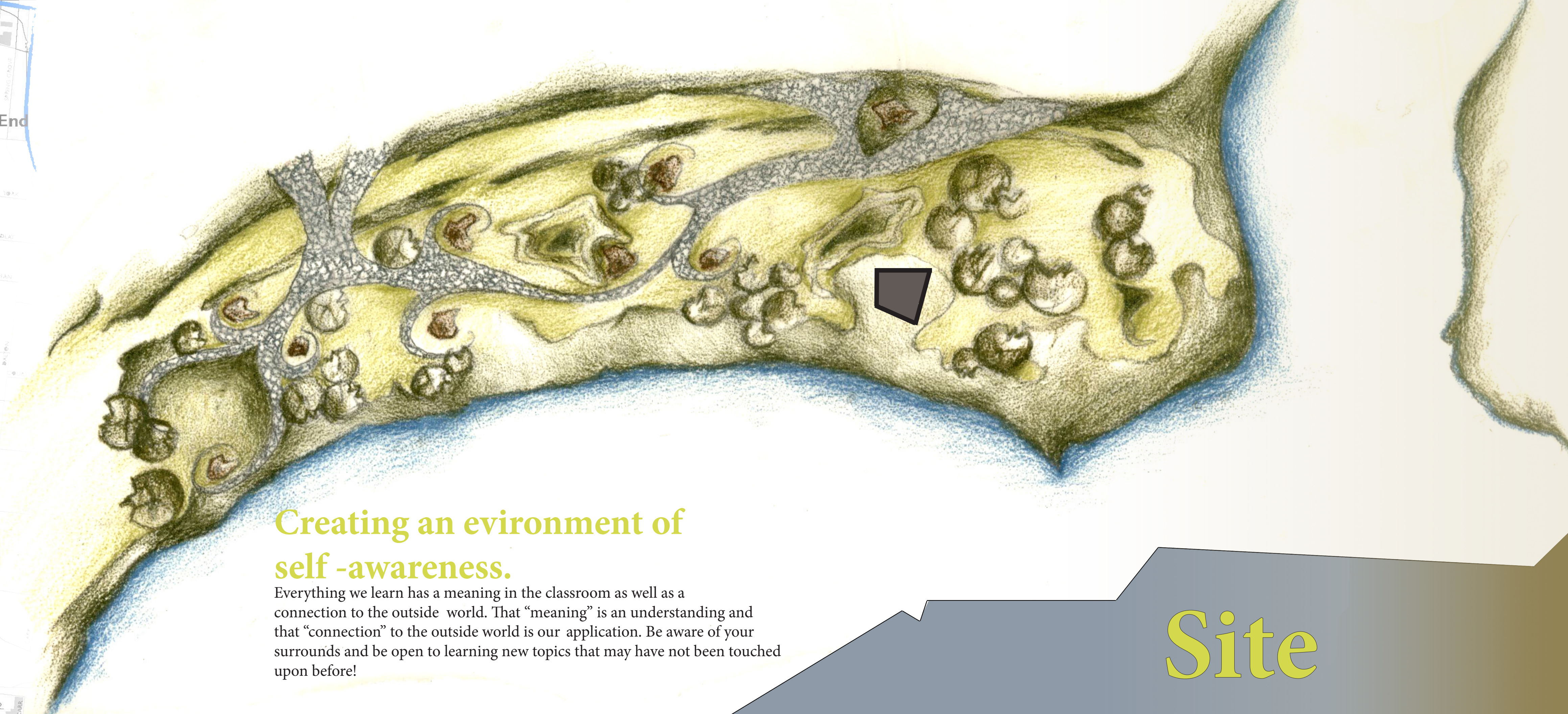
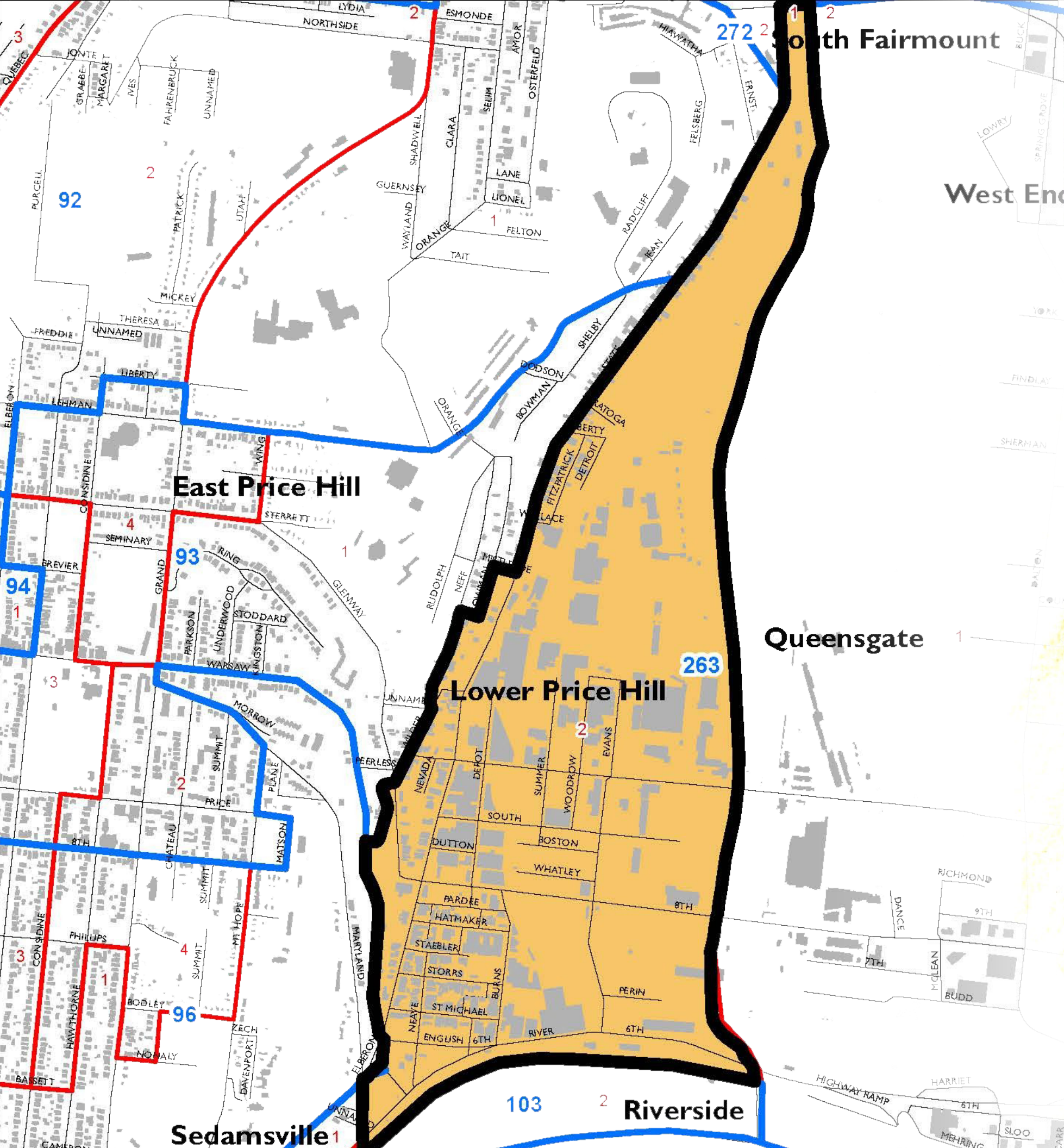
once the students become familiarized with the facility, we put their lessons into action with hands on exhibits that will can only be completed with the child's help!



Recreation

the rock wall as well as outdoor exposure allows the children to interact with the nature they are learning about and not just be informed through tours around the building.

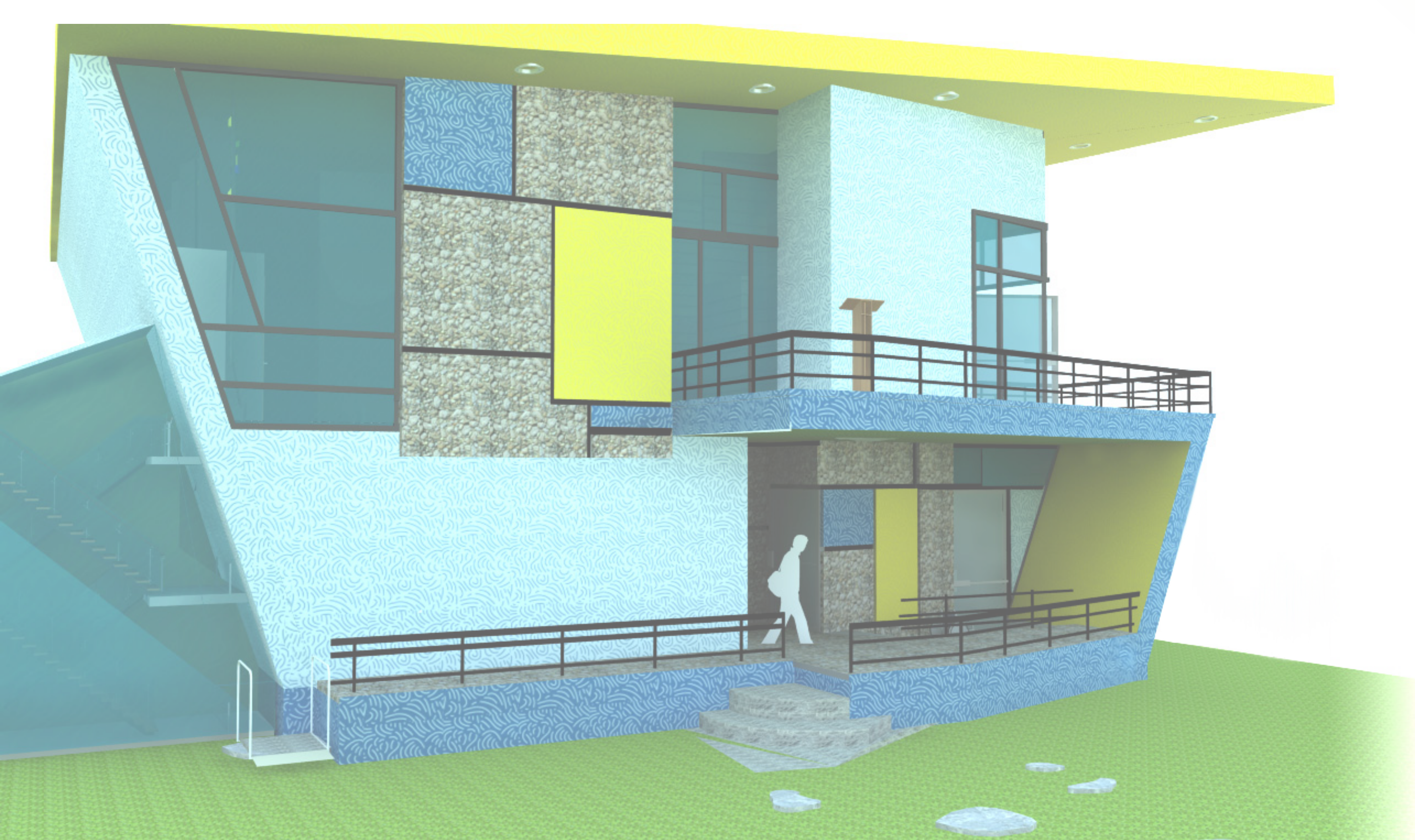




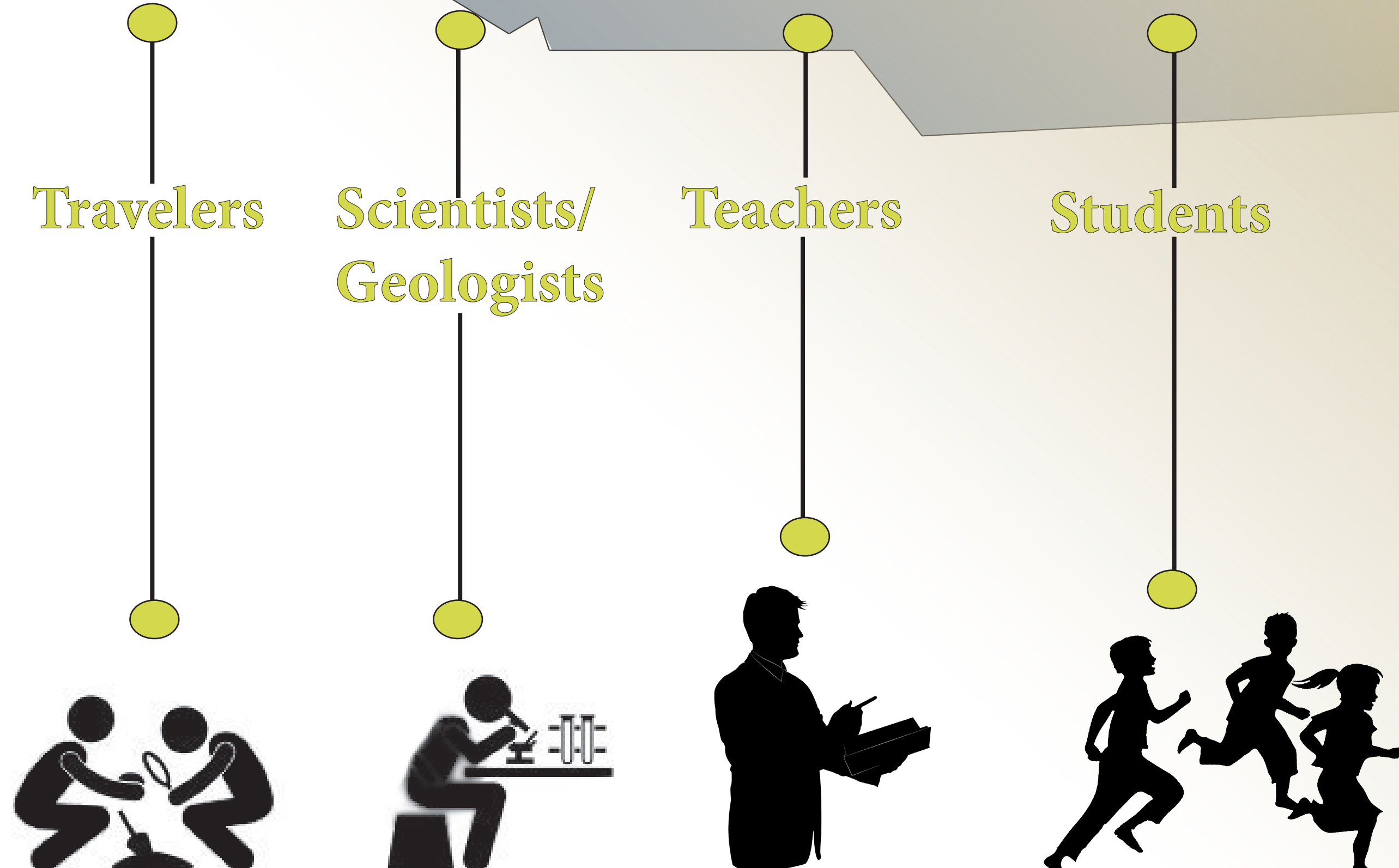
Creating an environment of self-awareness.

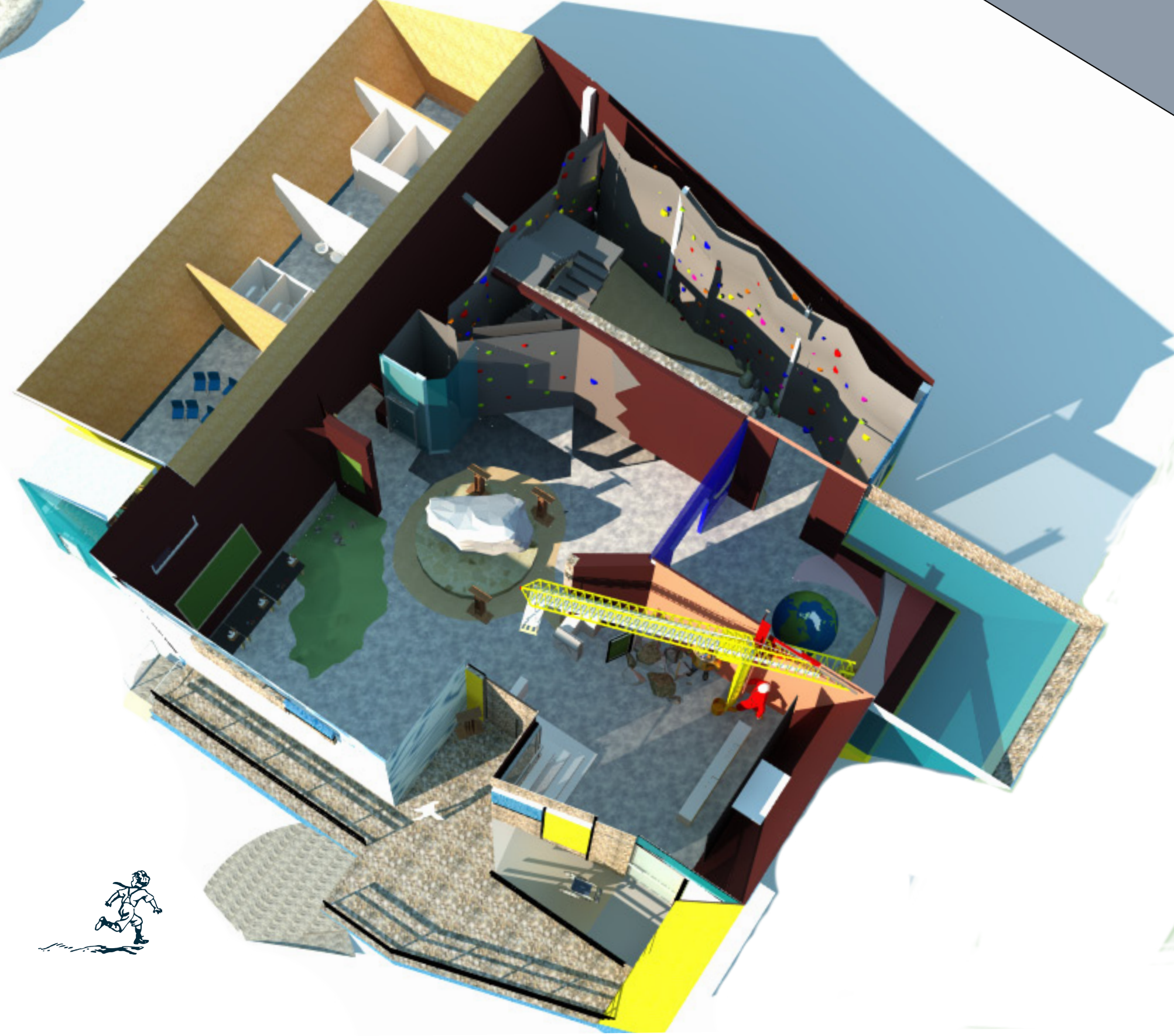
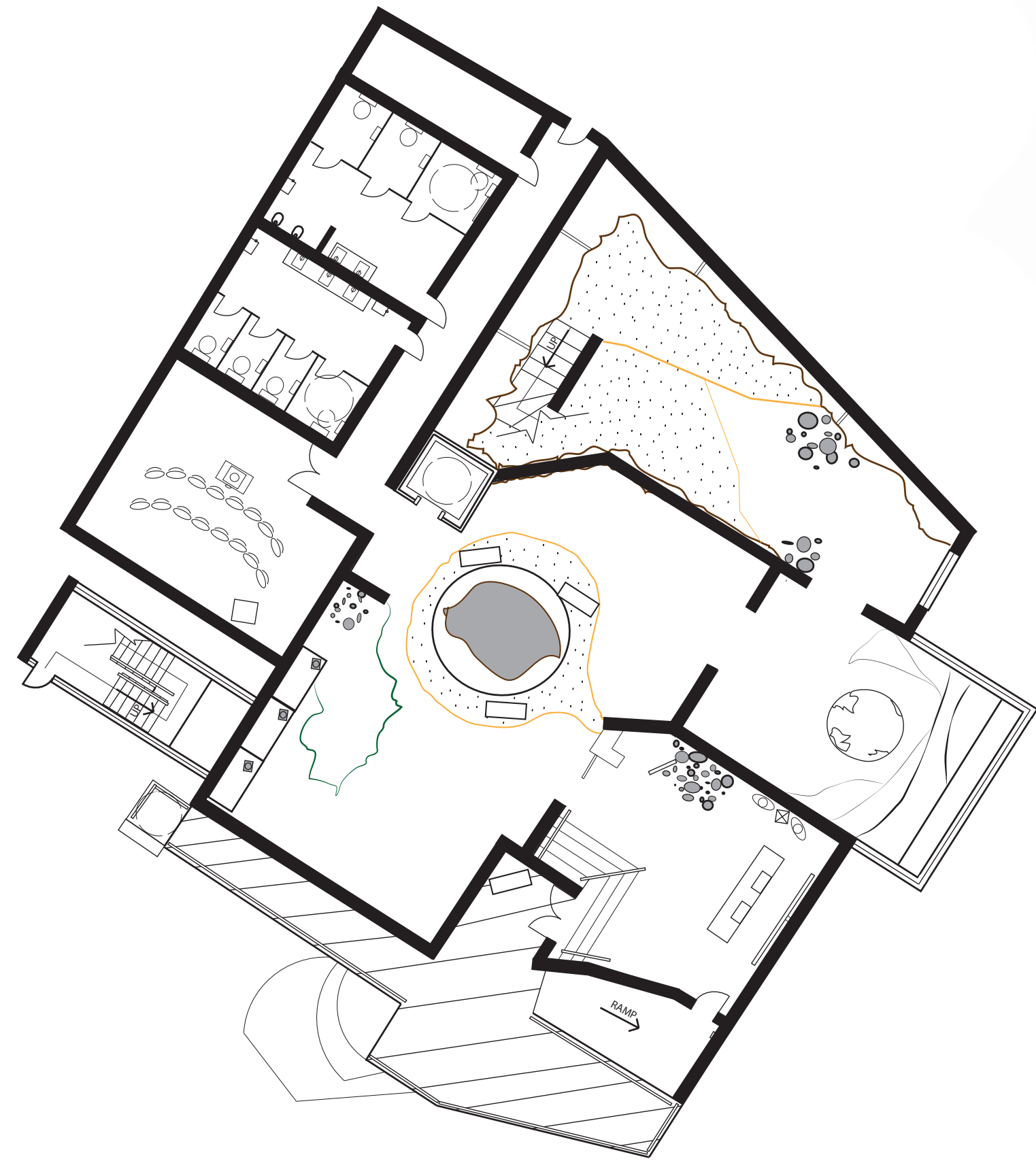
Everything we learn has a meaning in the classroom as well as a connection to the outside world. That “meaning” is an understanding and that “connection” to the outside world is our application. Be aware of your surrounds and be open to learning new topics that may have not been touched upon before!

Site



Who We Benefit





Entry Level



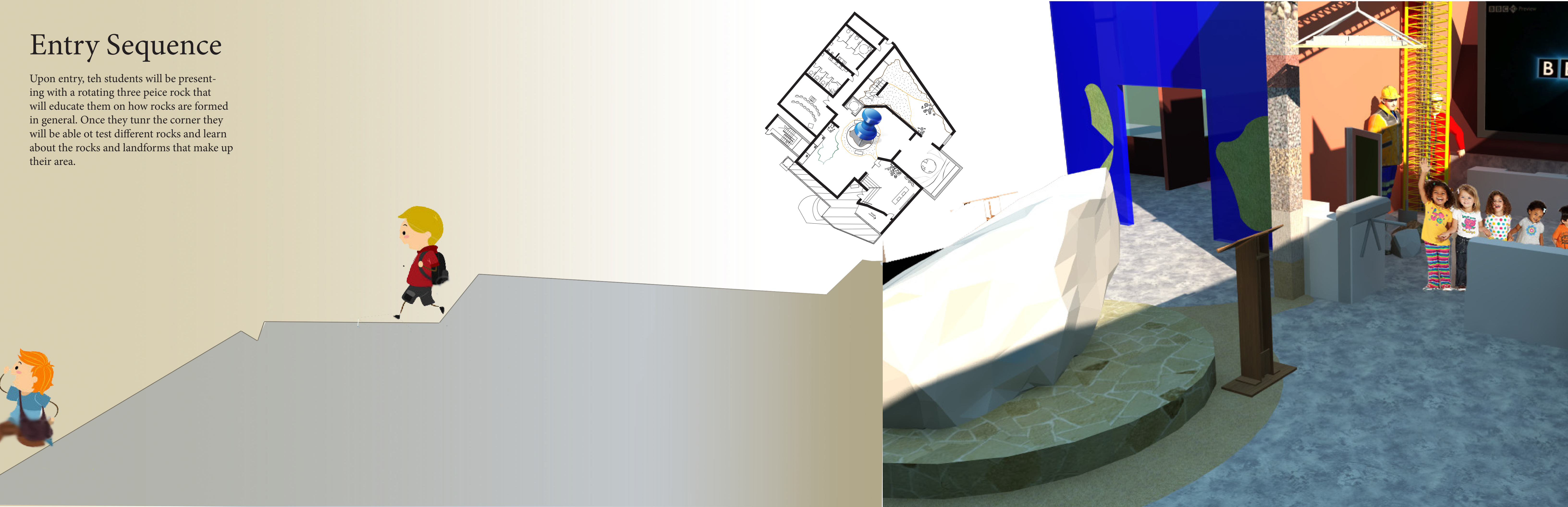
Welcome!

Hello, and welcome to the first ever Rock Repository in Lower Price Hill, Cincinnati, OH! Our goal is to help educate children, parents and teachers of the area about how their land was created and what condition it is currently in today. We do this through a slew of exhibit spaces that are interactive and educational!



Entry Sequence

Upon entry, the students will be presented with a rotating three piece rock that will educate them on how rocks are formed in general. Once they turn the corner they will be able to test different rocks and learn about the rocks and landforms that make up their area.



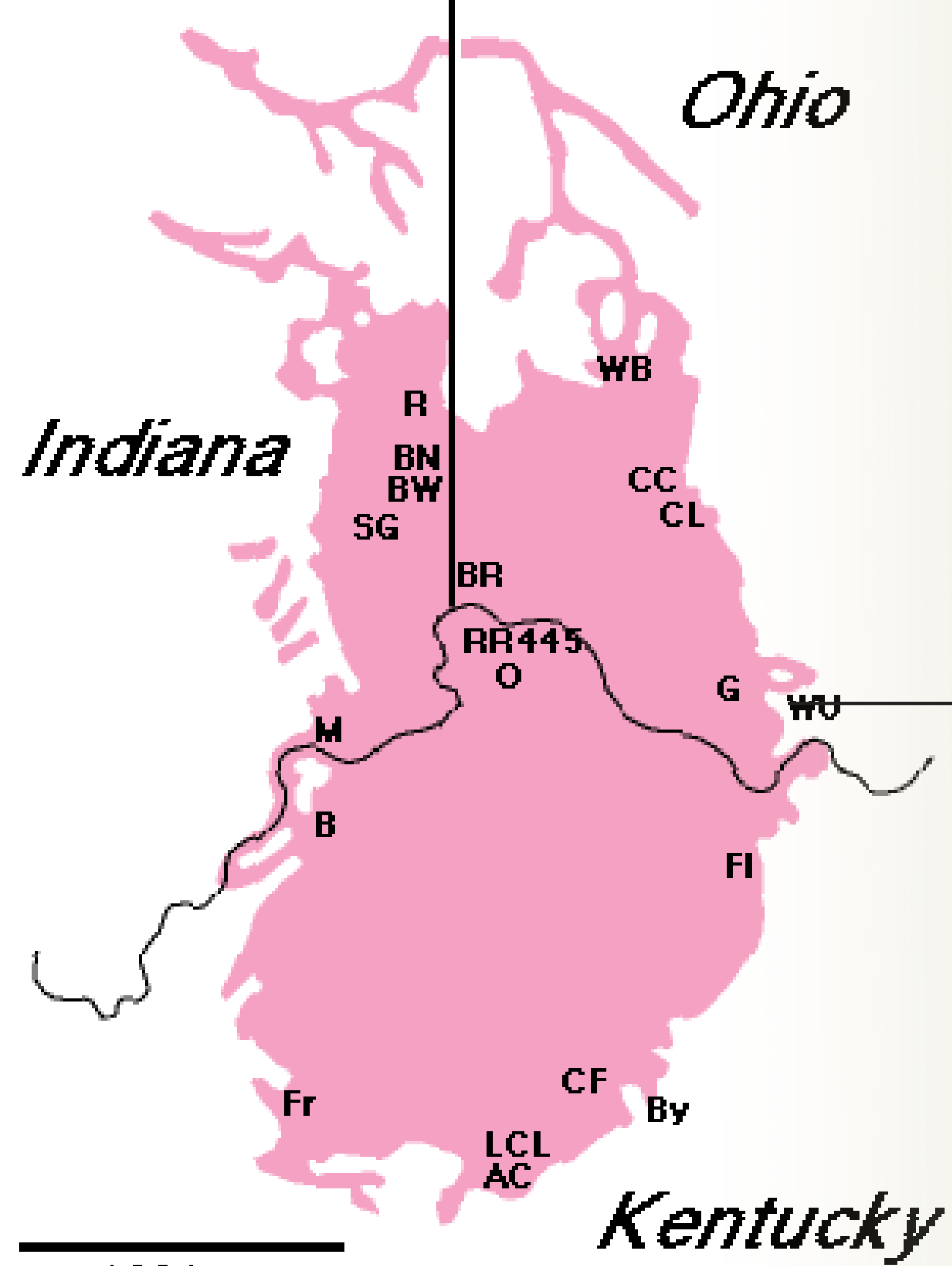
1 rock, 3 lessons

Fossil Breakdown

The breakdown of the three piece rock include the three forms we ahve studied for centuries: sedimentary, igneous and metamorphic. These rocks will later appear on the rock wall children will be able to interact with and climb on.

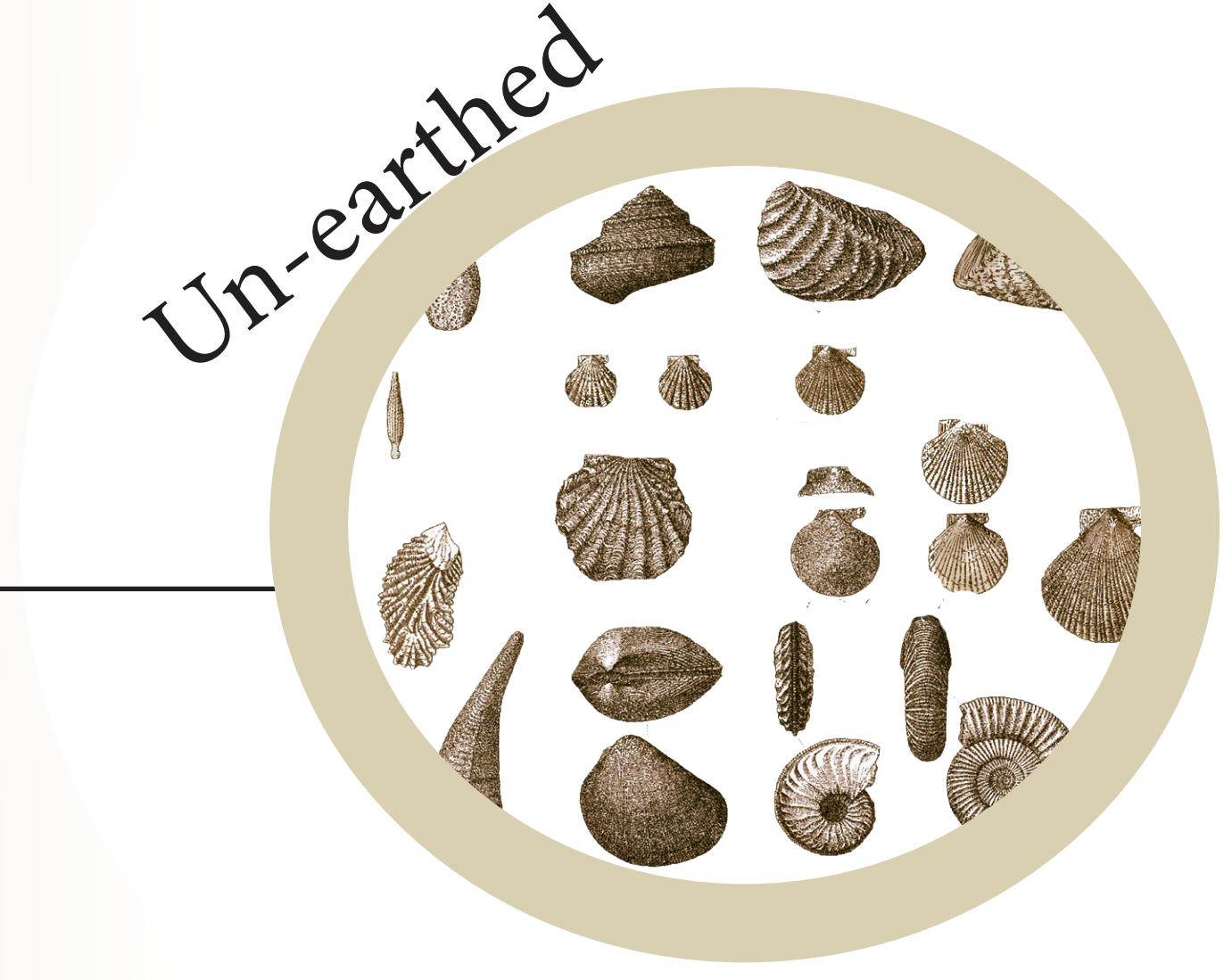


Fossil Fuel....for learning!



Alongside the 3 piece rock upon entry, the children will be able to go over the to the testing mound and test different fossil discovered right in their backyard under magnifying equipment.

Cincinnati, Ohio is known geological as one of the most preserved and rock rich areas in the United States as well as the World. Little did we know this was all at our fingertips!



About the First Floor

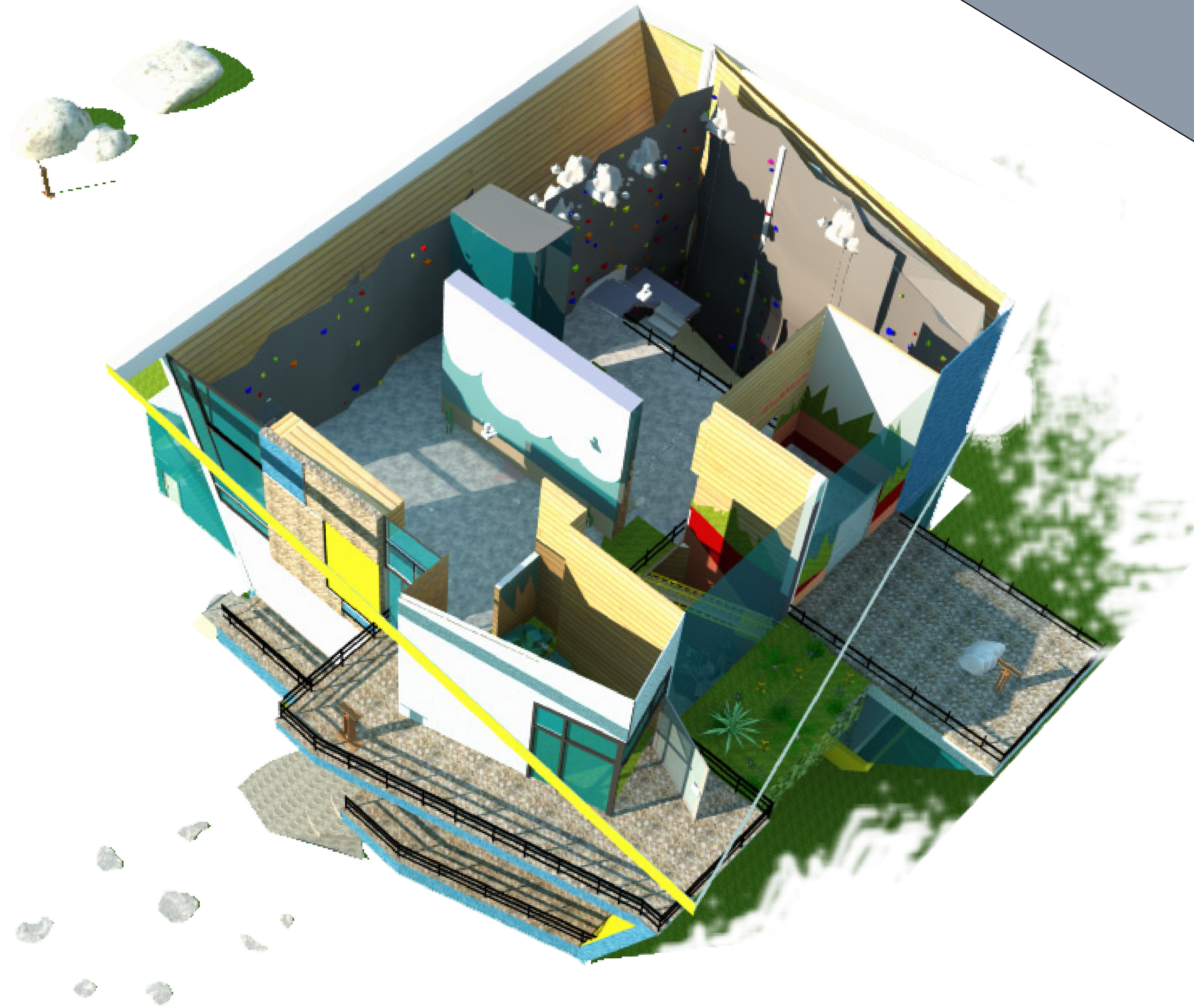
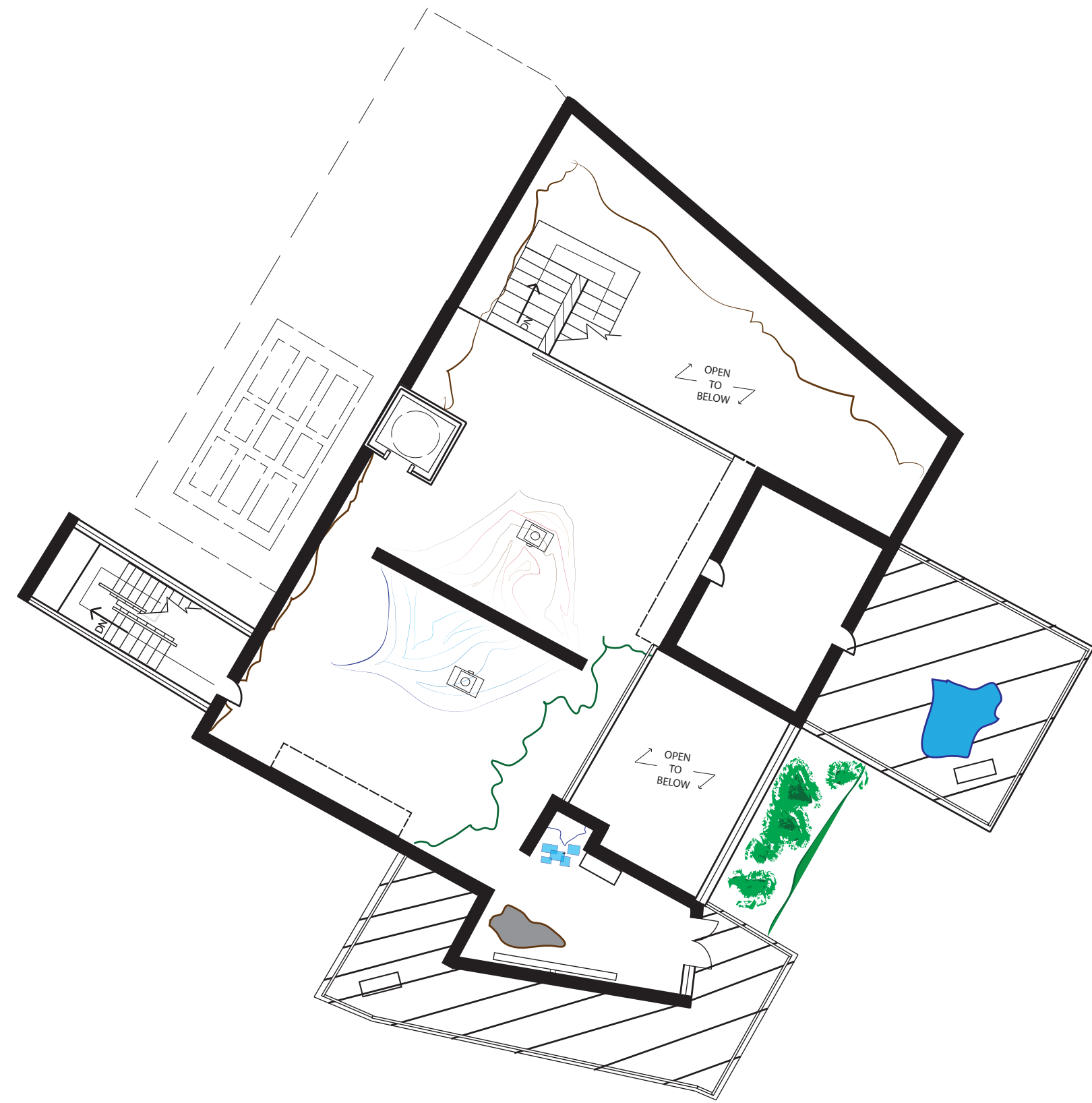
In general, the first level is tracing about the underground formations that city children and adults do not get to experience everyday. It informs them about what formed the earth and what it is like to think of the world from the “ground up”.



Climb to new heights...



Once one reaches the second floor, you will notice you have gone from the bottom of a mountain to the top, reaching new heights! You will then be introduced to how rocks form in and out of water and how they change forms as the rock form rises!

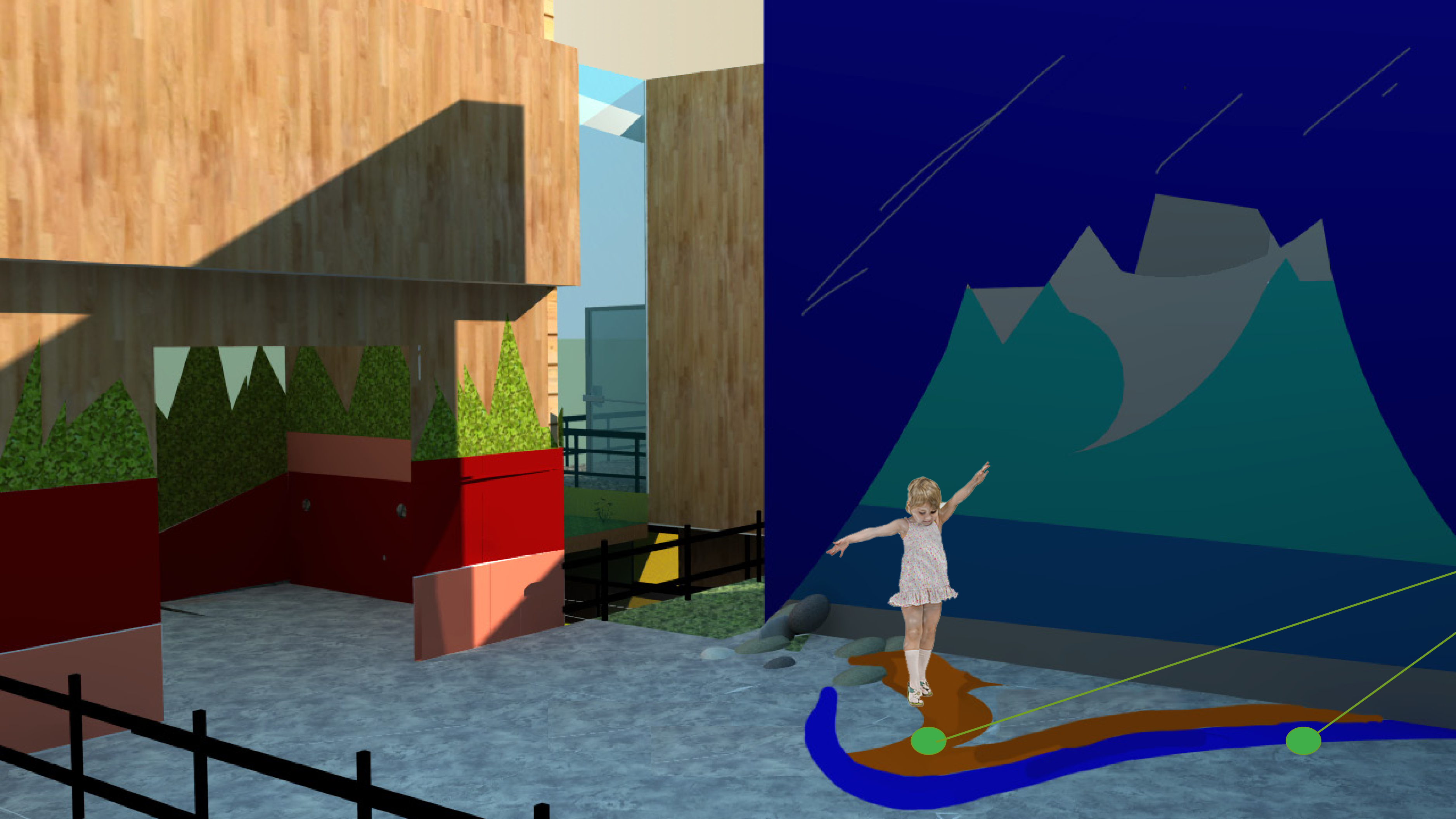


Second Level

About the Second Floor

The second floor allows us to teach the children how rocks may change once different elements interact with them. We specifically hone in on glaciers forming bodies of water to teach them more about how their land interacts and was shaped by the riverfront.

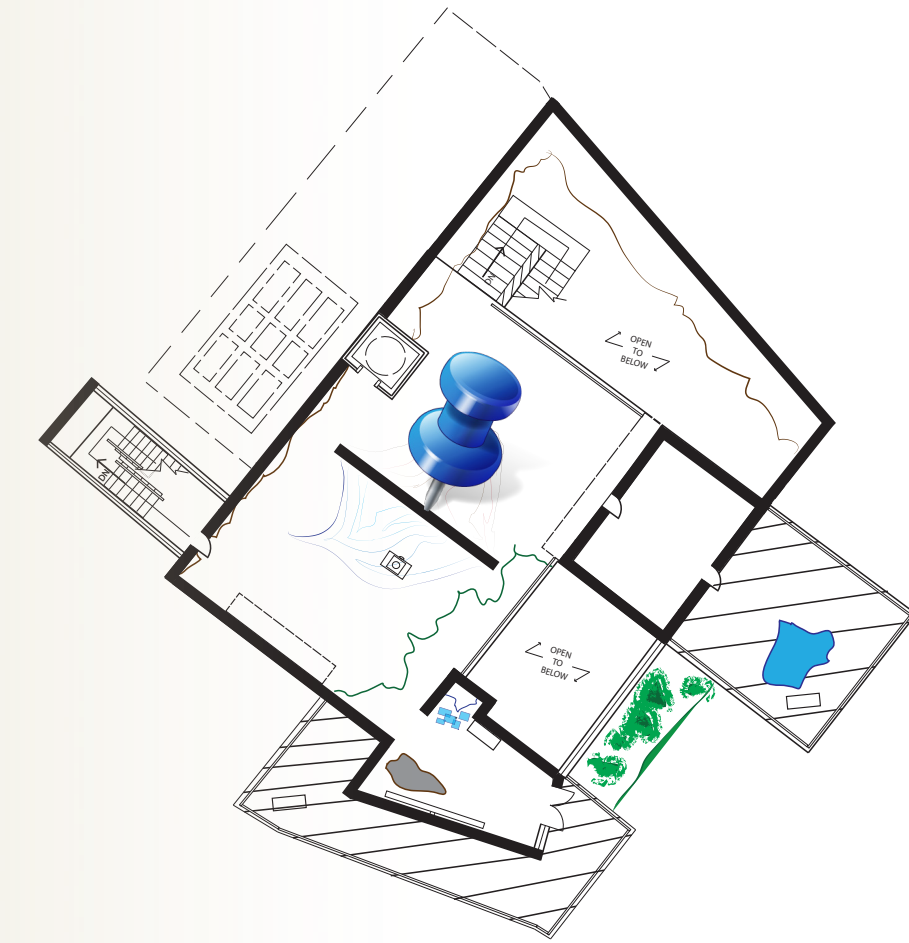




Glacier Levels



The interactive and foot sensitive display wall will project an image of the discovered layer of any rock form. When a child steps on the appropriate level on the floor it will illuminate that level on the screen! This gives them a sense of awareness and depth!

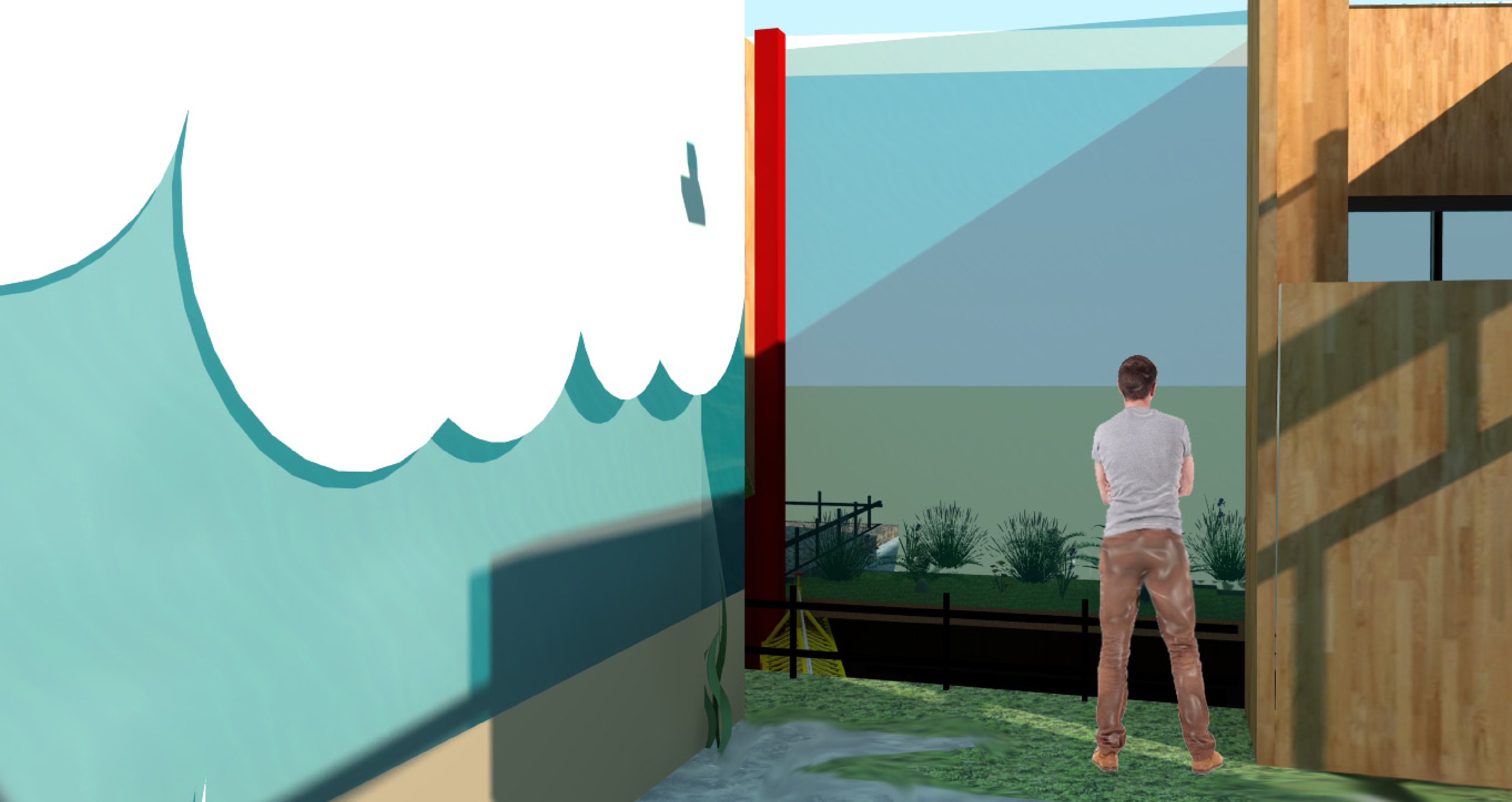




Water Levels

This water level exhibit takes tested sand-to-water levels from basins, oceans, rivers, and other bodies of water to show the children how the ground interacts and is effected by different water pressures, depending on their depths. They are actually able to take samples out of the different containers and there will be administrators there to assist in explaining the lesson.





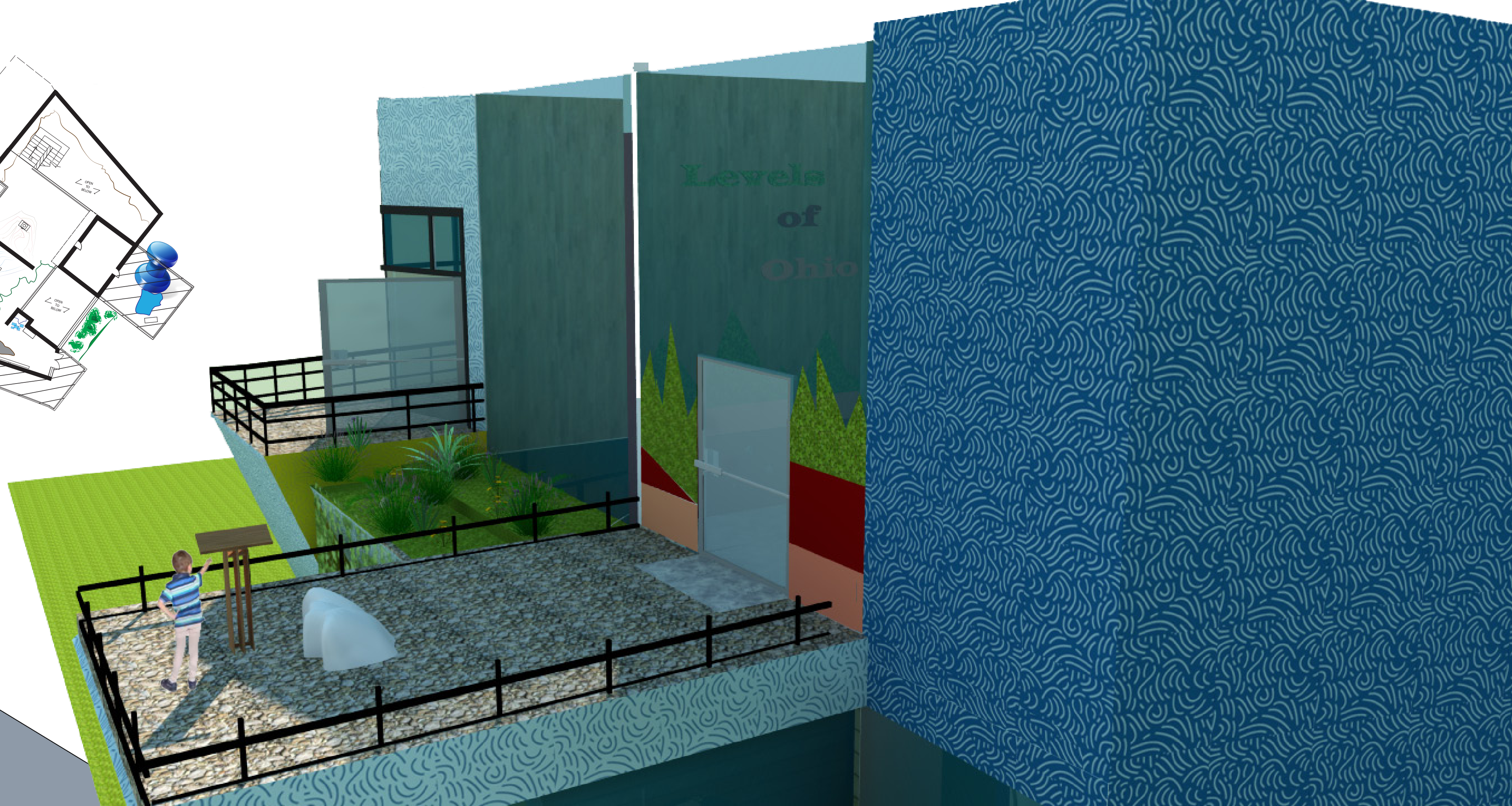
Views from the top floor!

Once you have moved around the volcano wall you will come the ocean wall, that is also foot sensitive, allowing one to discover new levels and depths. But, more importantly, maybe the view you gain before moving to the outside observation deck. This north side faces the riverfront and allows the students to realize where they are

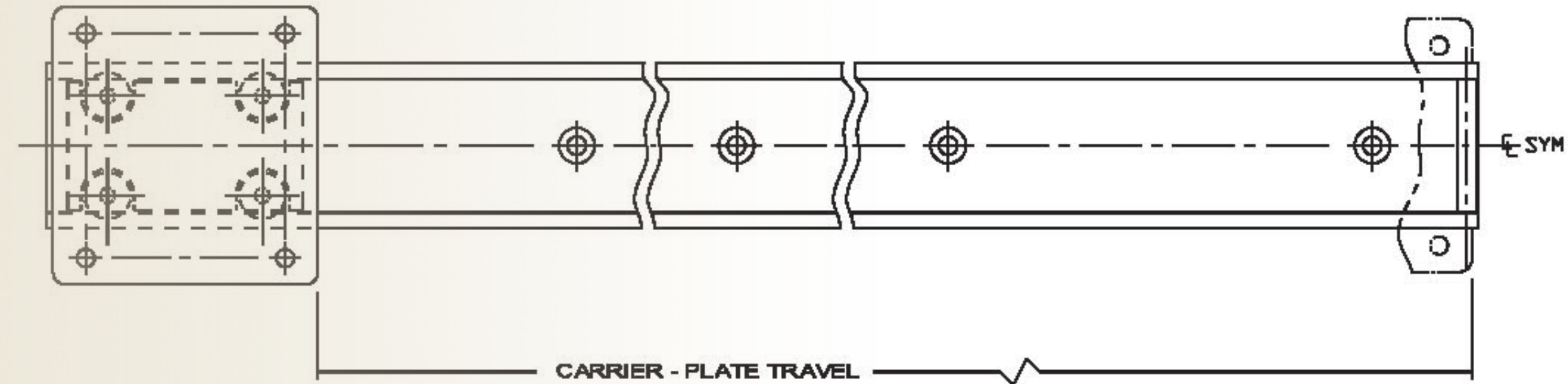


Observation Decks

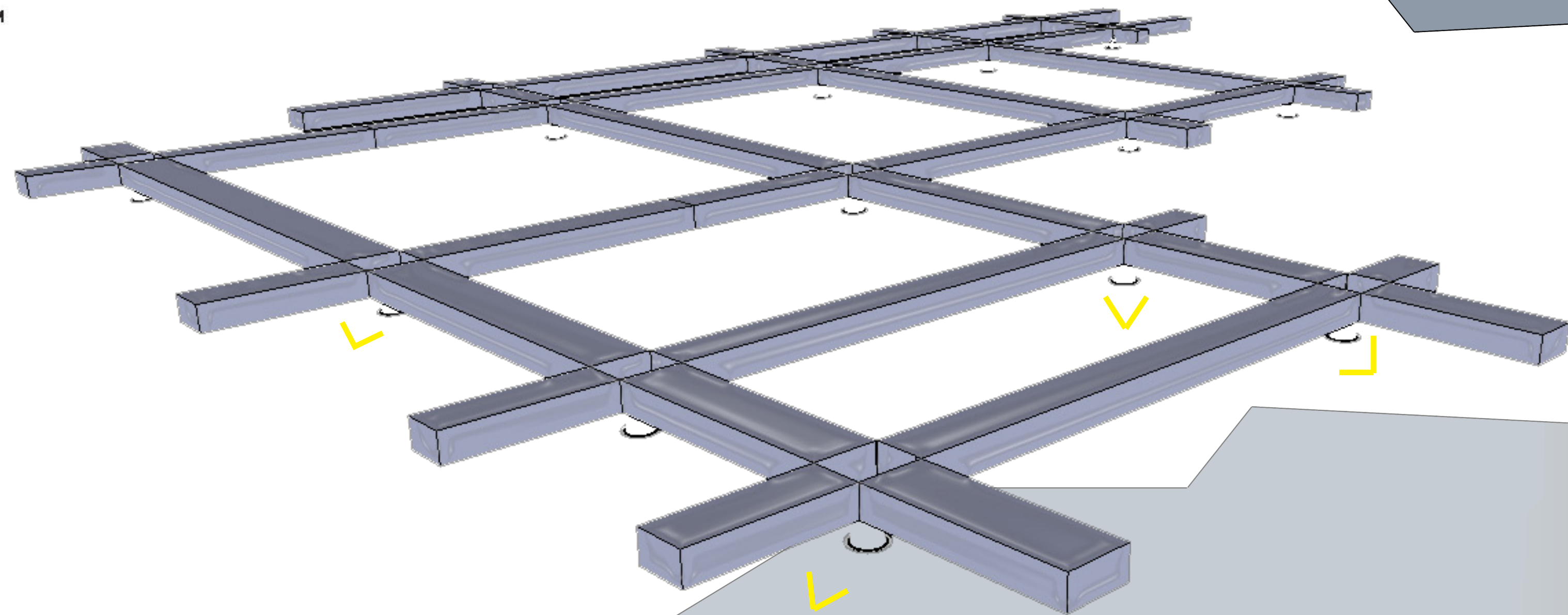
These outdoor decks are accessible by all and allows for the introduction of glaciers, as the lessons transition from present-day rocks to the historical aspect that formed the Ohio River itself! There will be a glacier exhibit with an info station located outside on the decks for more information



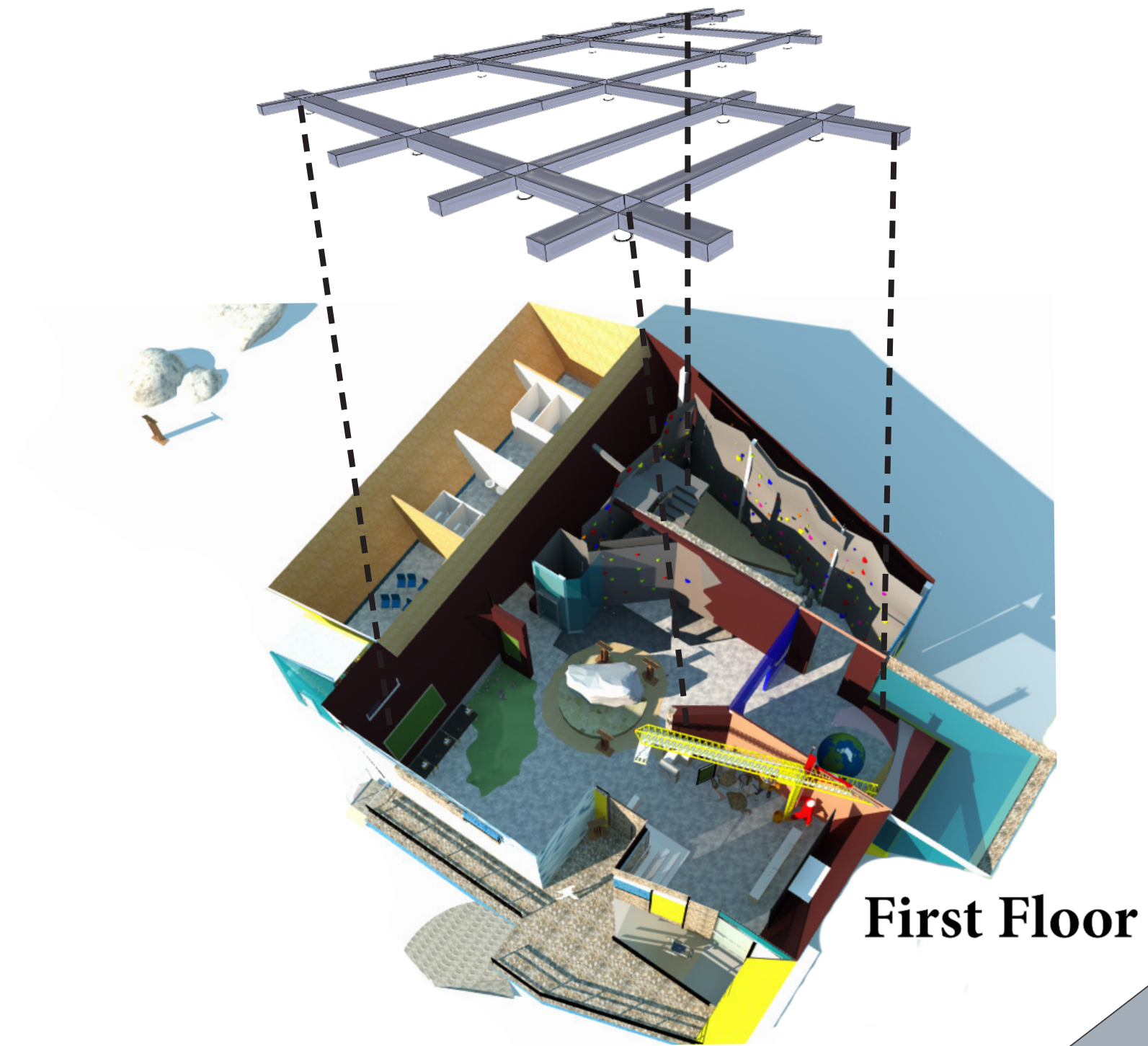
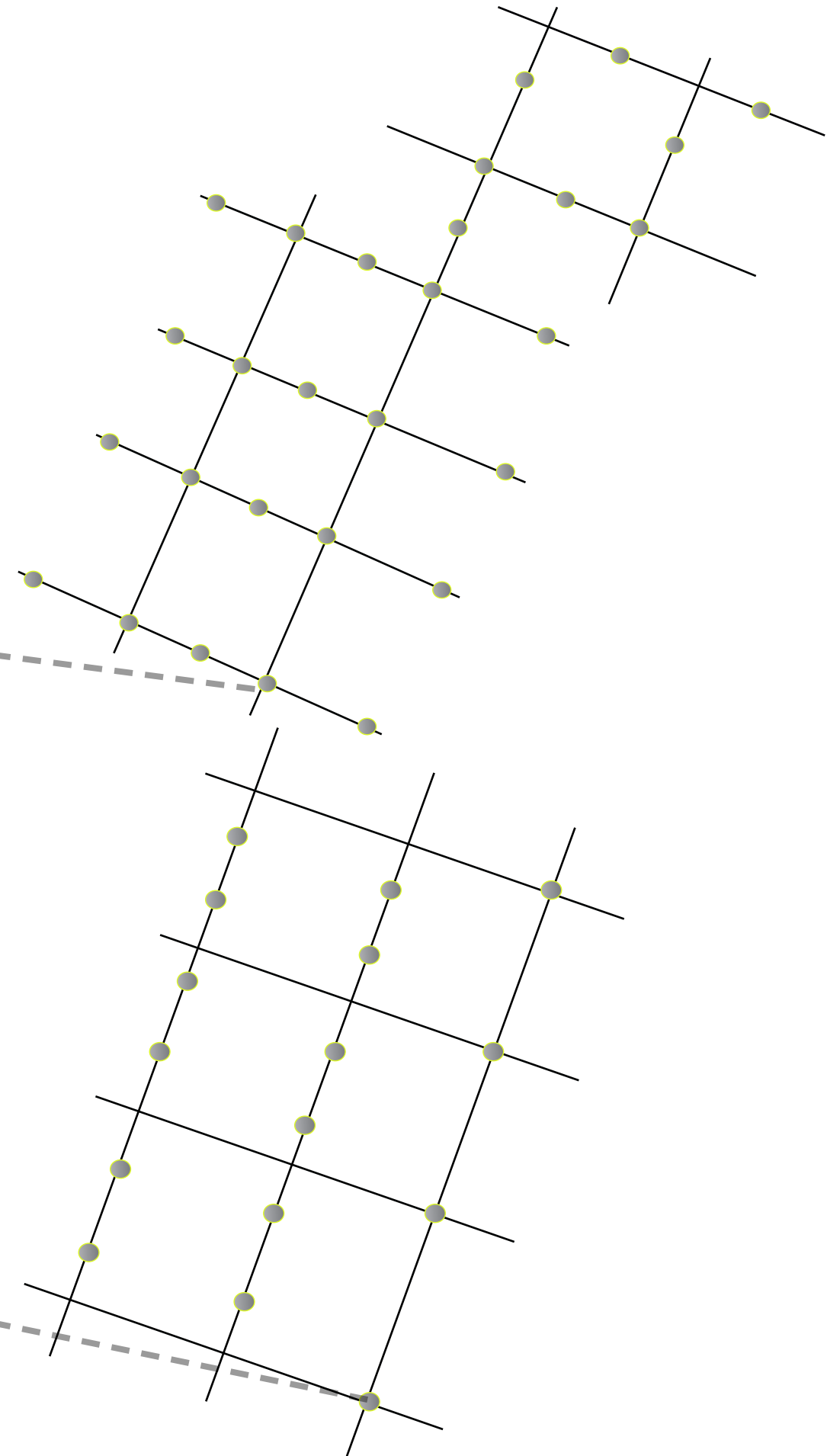
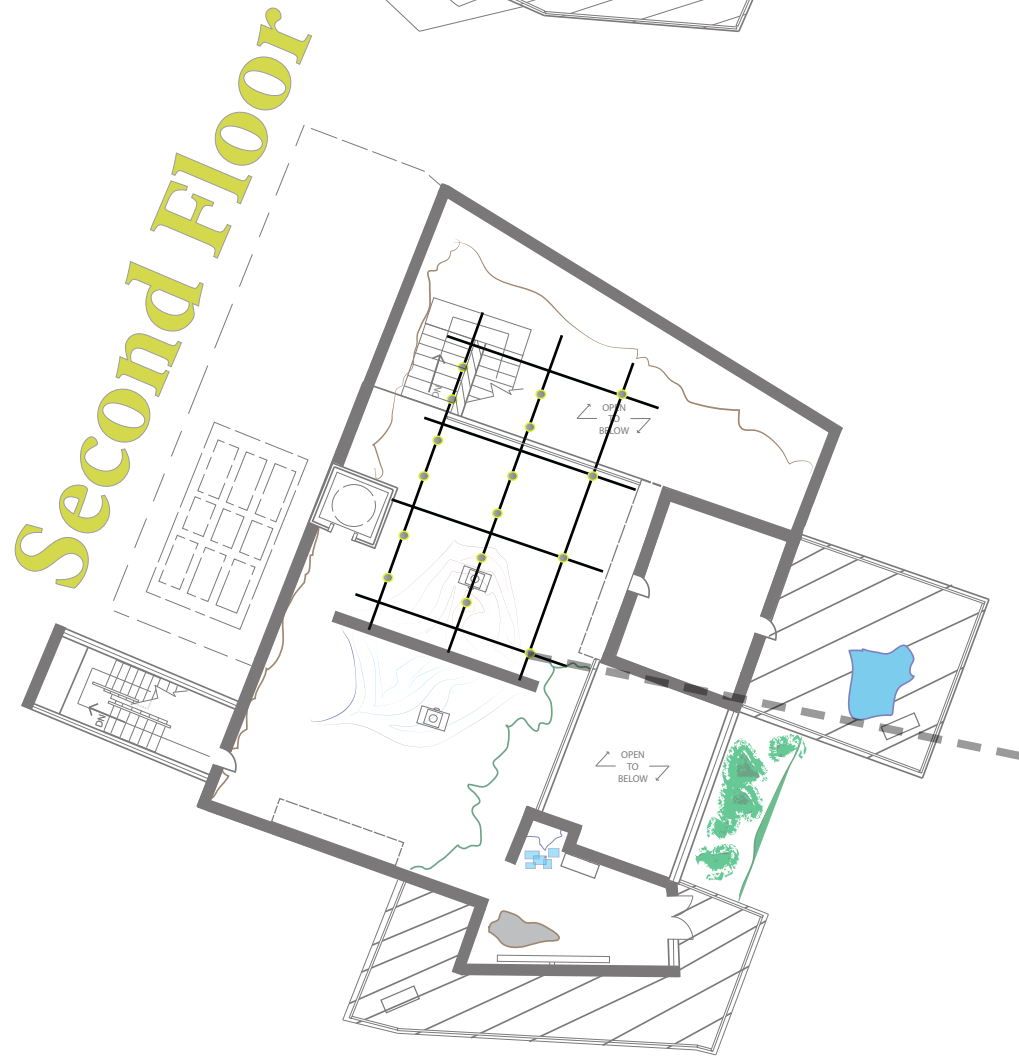
Enhancing space through **Light**

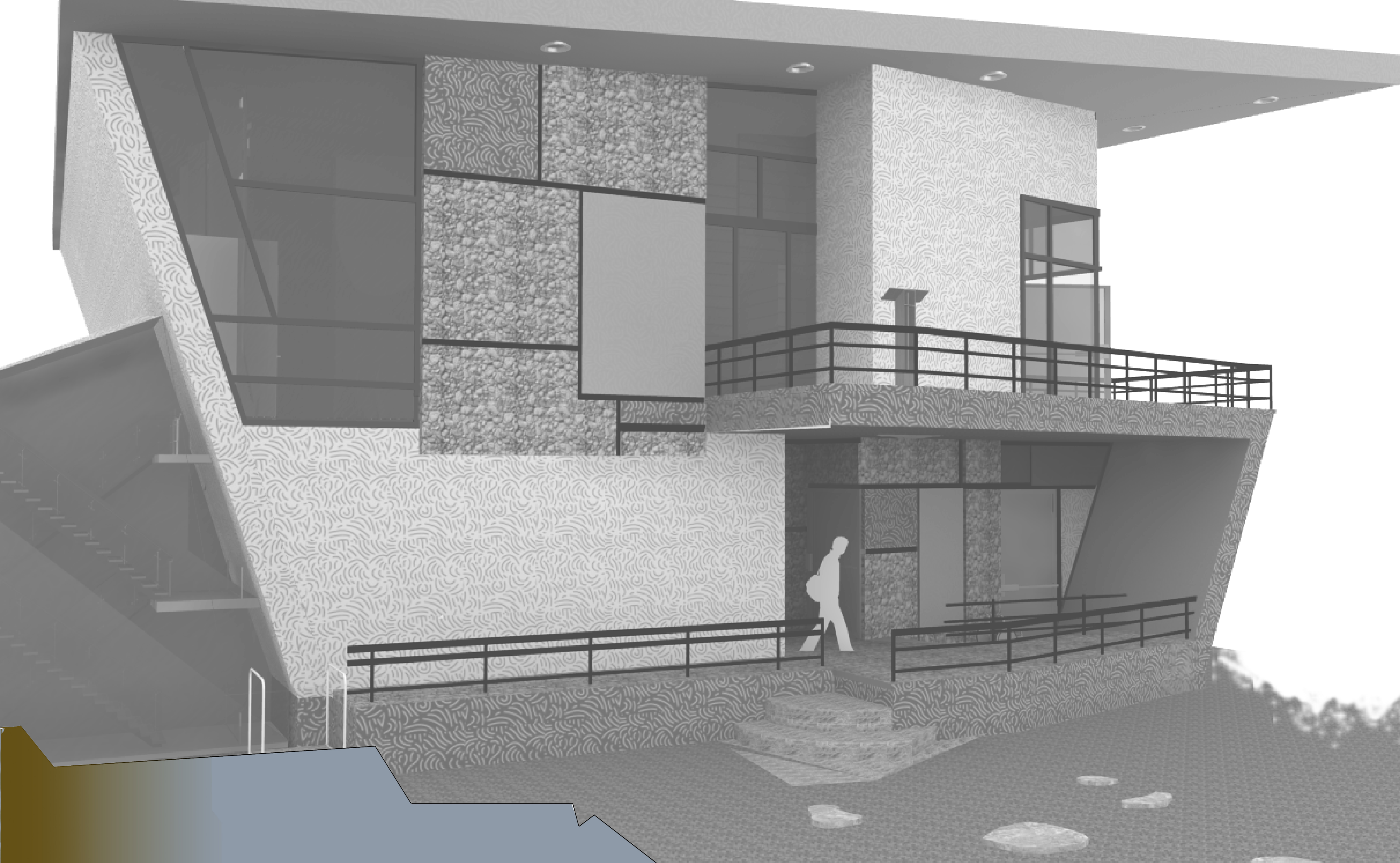


This **Tracking** system allows for different areas to be highlighted by light at the same time. Through the tracking and rotating bulbs we can easily move around the lighting according to new exhibits that come in to the museum to compliment the lessons.



Sample View





Thanks for visiting!

**YOU
ROCK**