

BROOKLYN



CHILDREN'S



MUSEUM

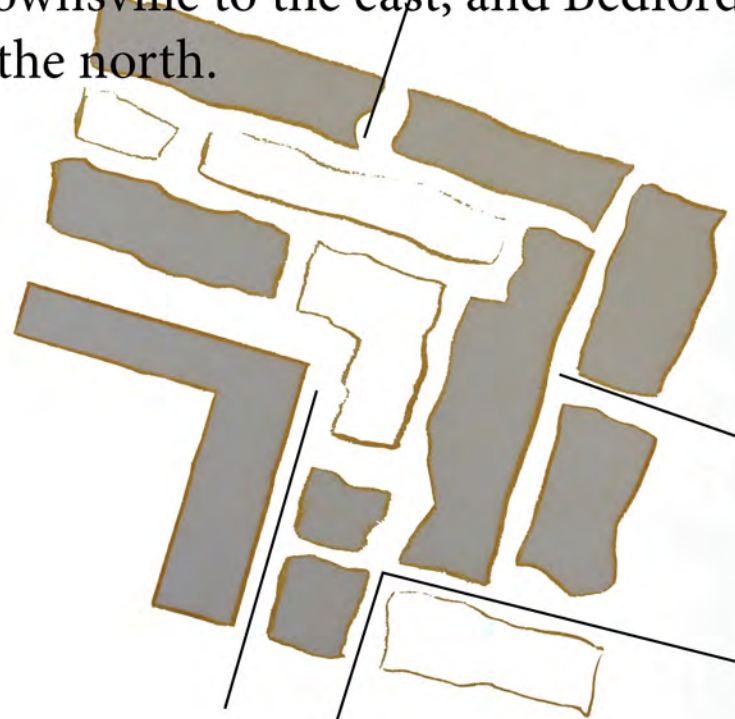


The Brooklyn Children's Museum is located in Crown Heights, Brooklyn, New York City. Founded in 1899, it was the first museum in the United States and some believe, the world, to cater specifically to children and is unique in its location, predominantly a residential area. Housed in a multi-level underground gallery, the museum underwent an expansion and renovation to double its space, reopened on September 20, 2008, and became the first **green museum** in New York City.

CONTEXT

Crown Heights is a neighborhood in the central portion of the New York City borough of Brooklyn. The main thoroughfare through this neighborhood is Eastern Parkway, a tree-lined boulevard designed by Frederick Law Olmsted extending two miles.

Crown Heights is bounded by Franklin Avenue (to the west), Fulton Street (to the north), Ralph Avenue (to the east) and Empire Boulevard/ East New York Avenue (to the south). It is about one mile wide and two miles long. Neighborhoods bordering Crown Heights include Prospect Heights to the west, Flatbush to the south, Brownsville to the east, and Bedford-Stuyvesant to the north.

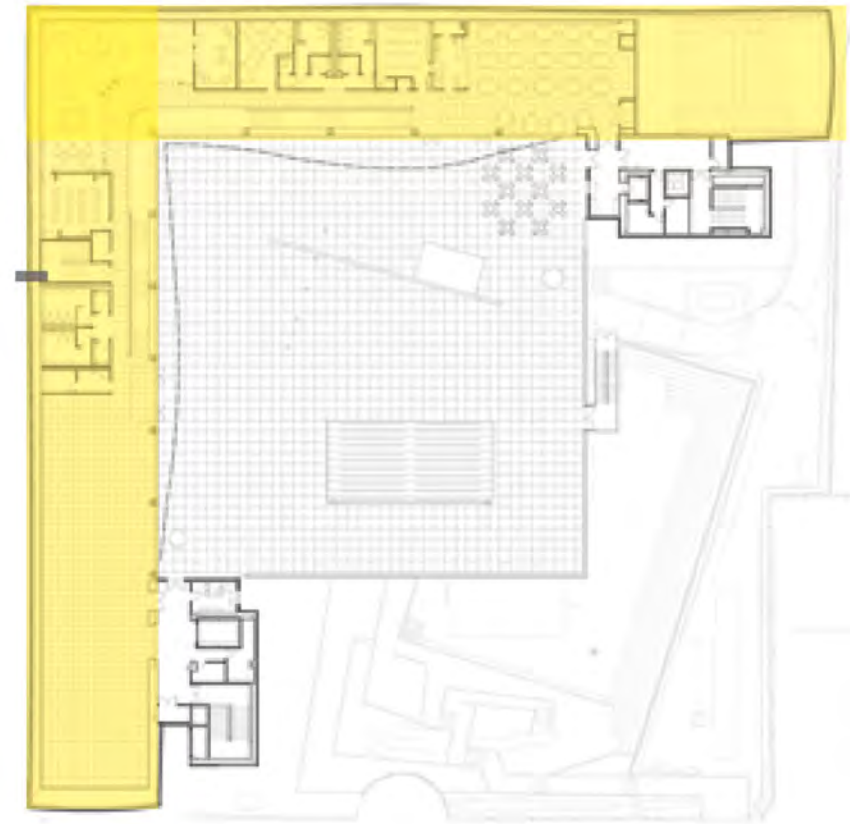
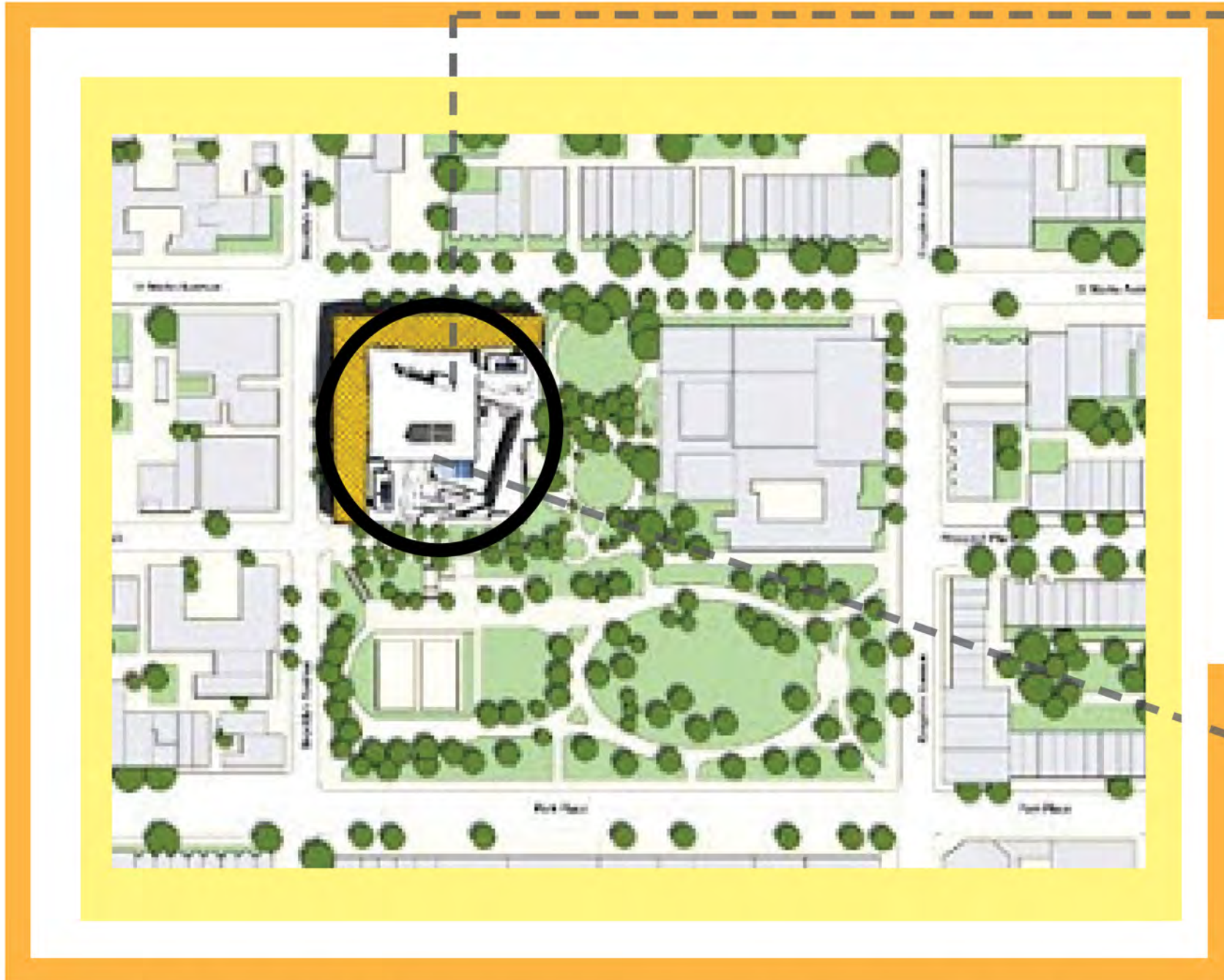


EXTERIOR

Birmingham is one of the few buildings that began to start the trend of exterior materials and imagine bleeding in the interior and vice versa. The large yellow “L” shape of the outside of the museum continues its materiality, color, texture into the interior. This yellow “L” is inviting in its color and its presence in the surrounding context, which makes for an inviting interior as well.



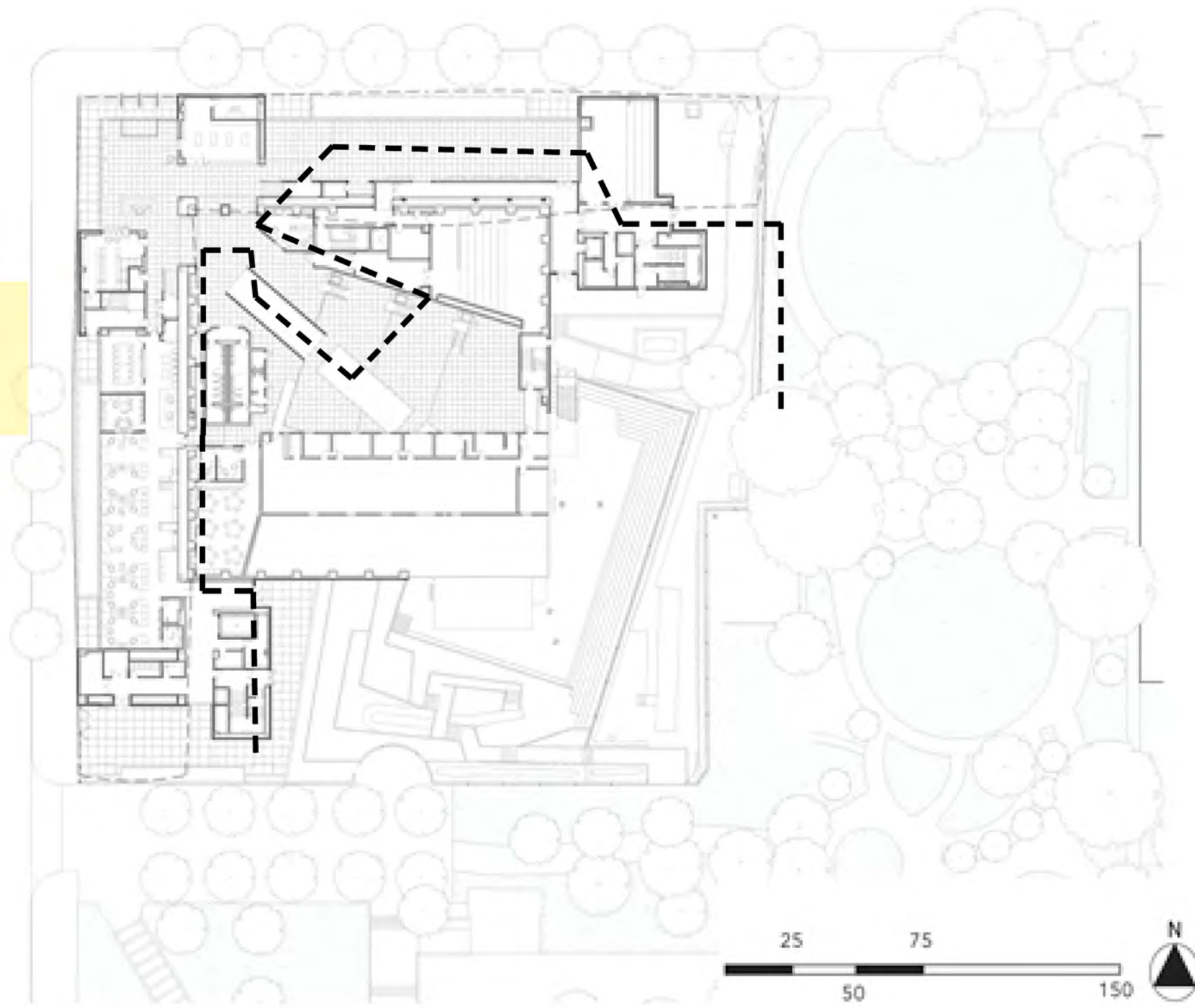
INTERIOR/ORGANIZATION



This Children's Museum very much understands that there is a **different importance** of space that changes with every level added

CIRCULATION

Ground floor plan.
In addition to an expanded, rationalized entrance lobby, the ground floor contains expanded gallery space in the northern wing for the museum's early-childhood education gallery, which features hands-on activity stations and a reading room. The western wing houses administrative offices.

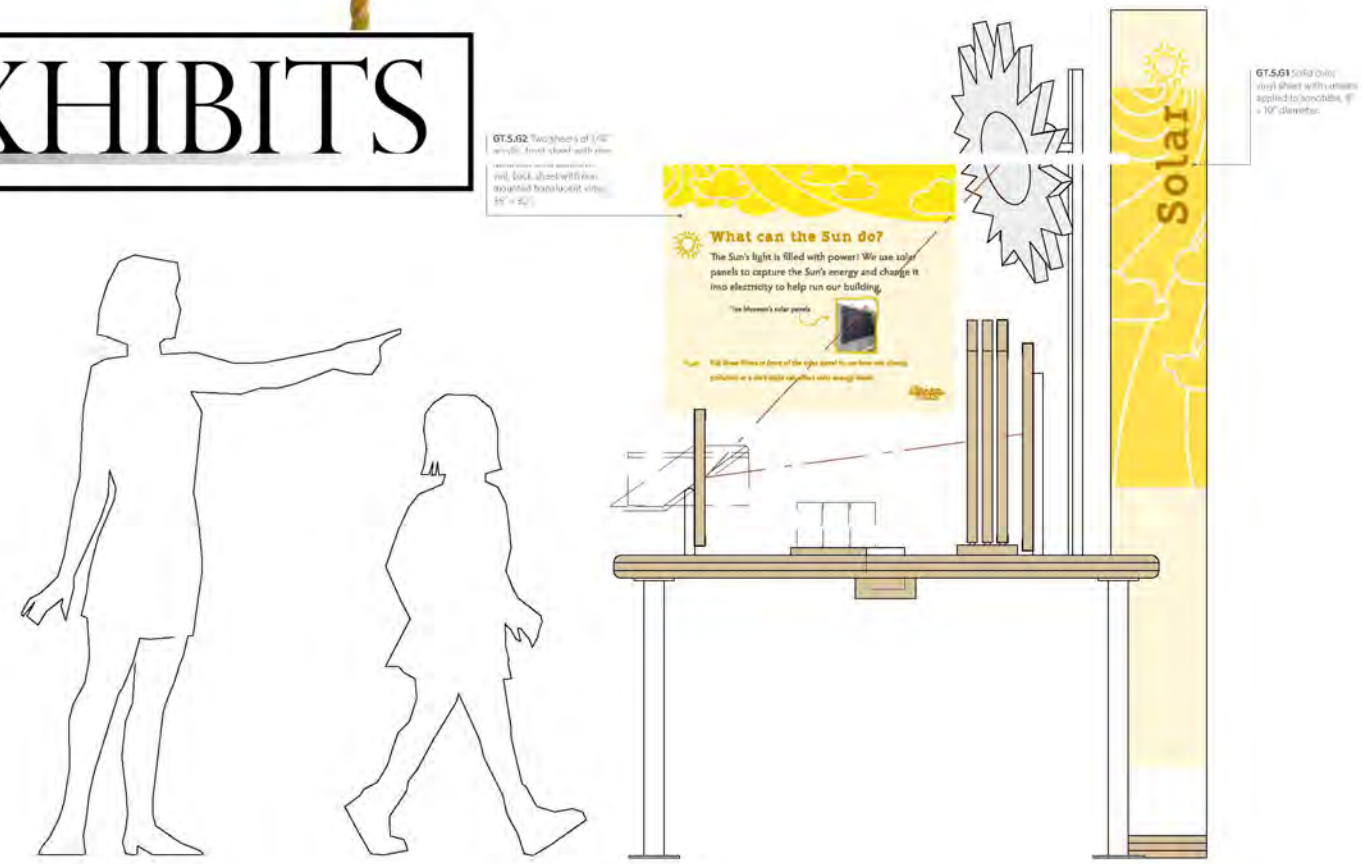


STILL CIRCULATING..

Second floor plan.
The expansion provides access to the pre-existing rooftop terrace through the second-floor exhibit galleries and the Kids' Café, which the terrace faces through glazed curtain walls.

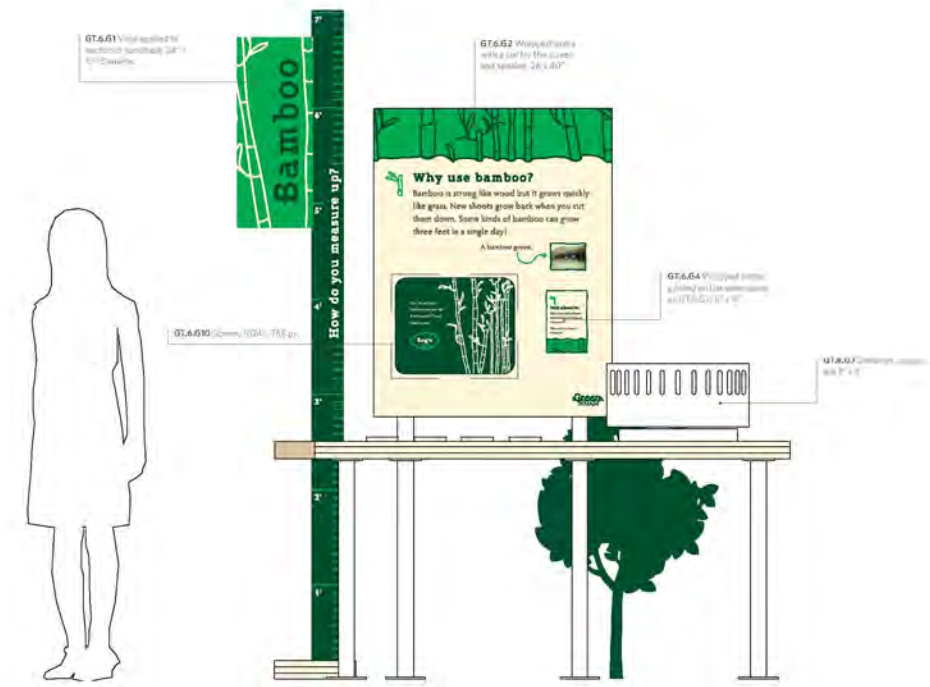


EXHIBITS



Interestingly enough, when they decided to build a new exhibit atop the second level of the facility, it was based off of sun light, solar nature and **natural environments.**

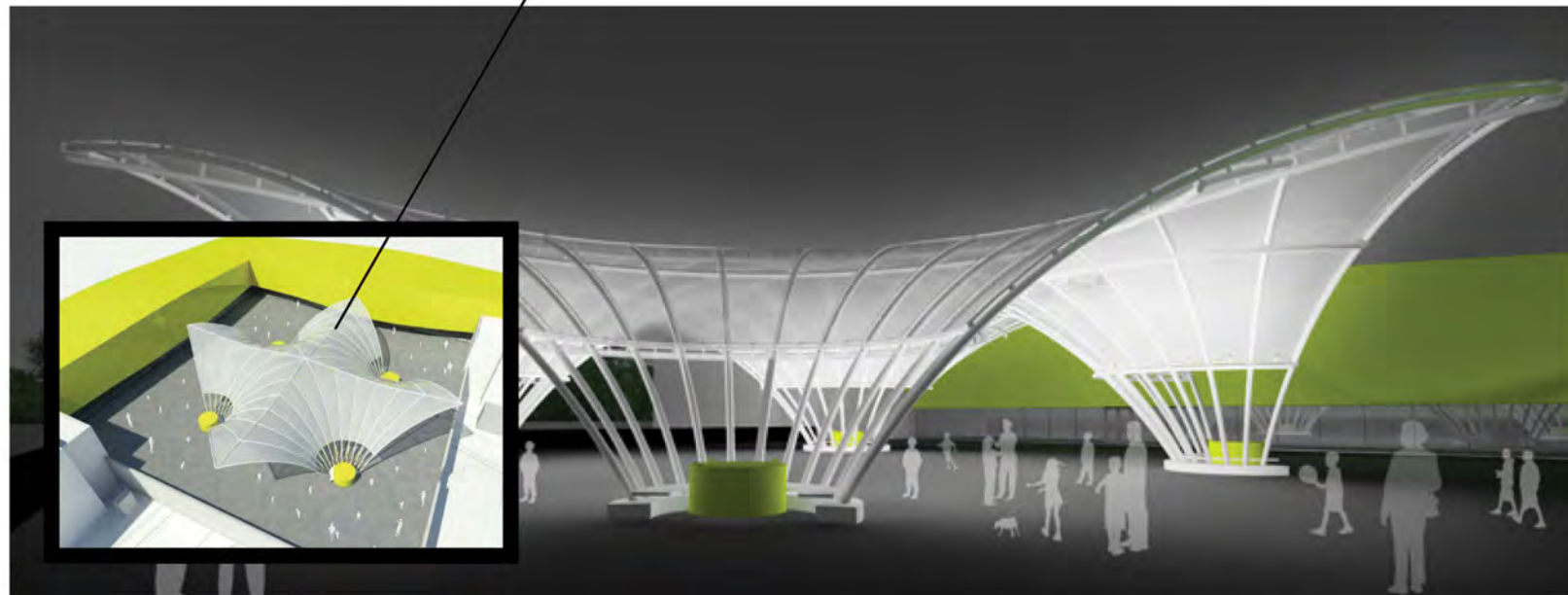
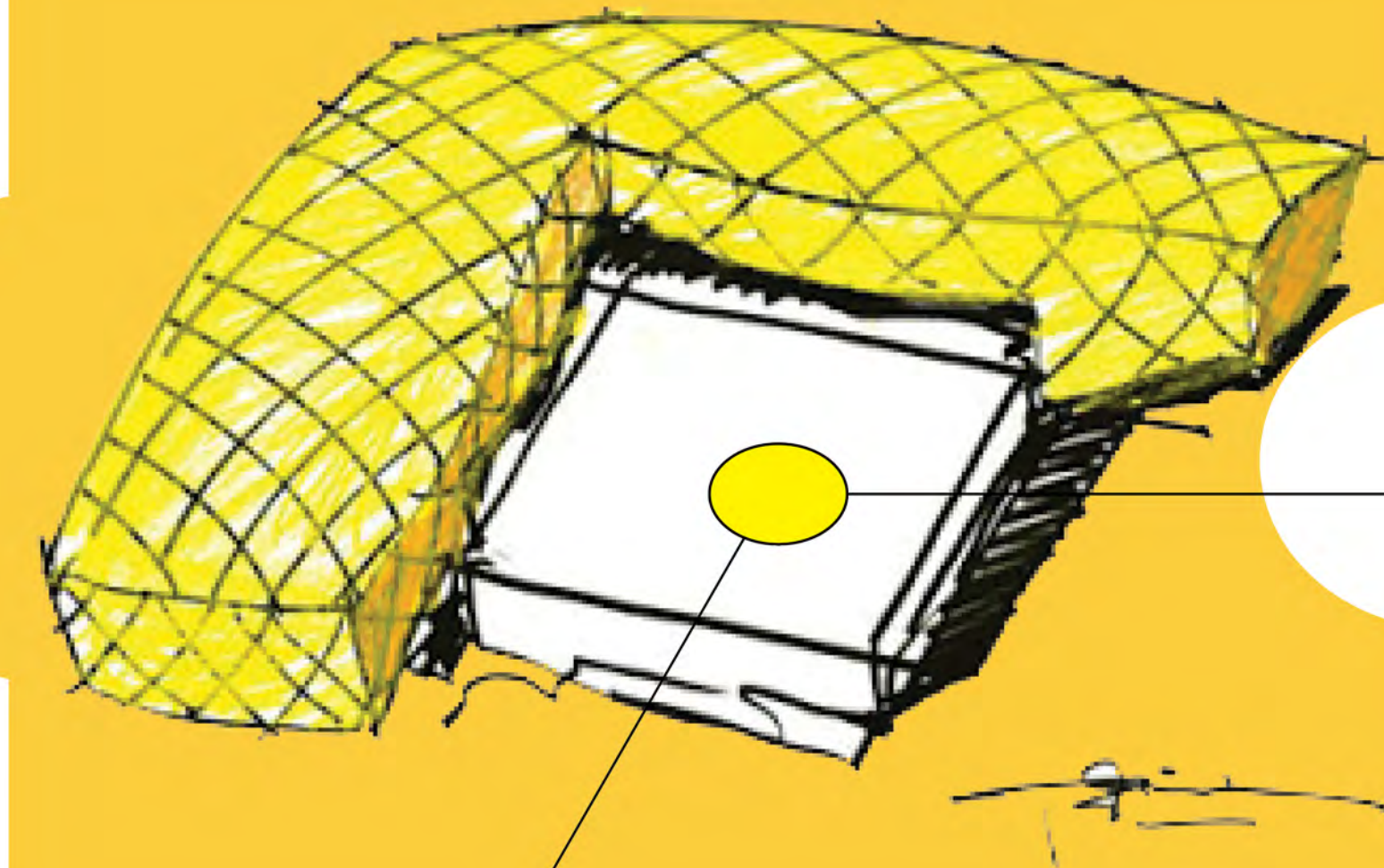
Exhibits were given direct attention to how natural source can provide learning opportunities as good, if not better than, man made inventions. Exhibits were simple yet interactive, and built on what children were learning in outdoor school programs in the area.



ENVIRONMENTAL

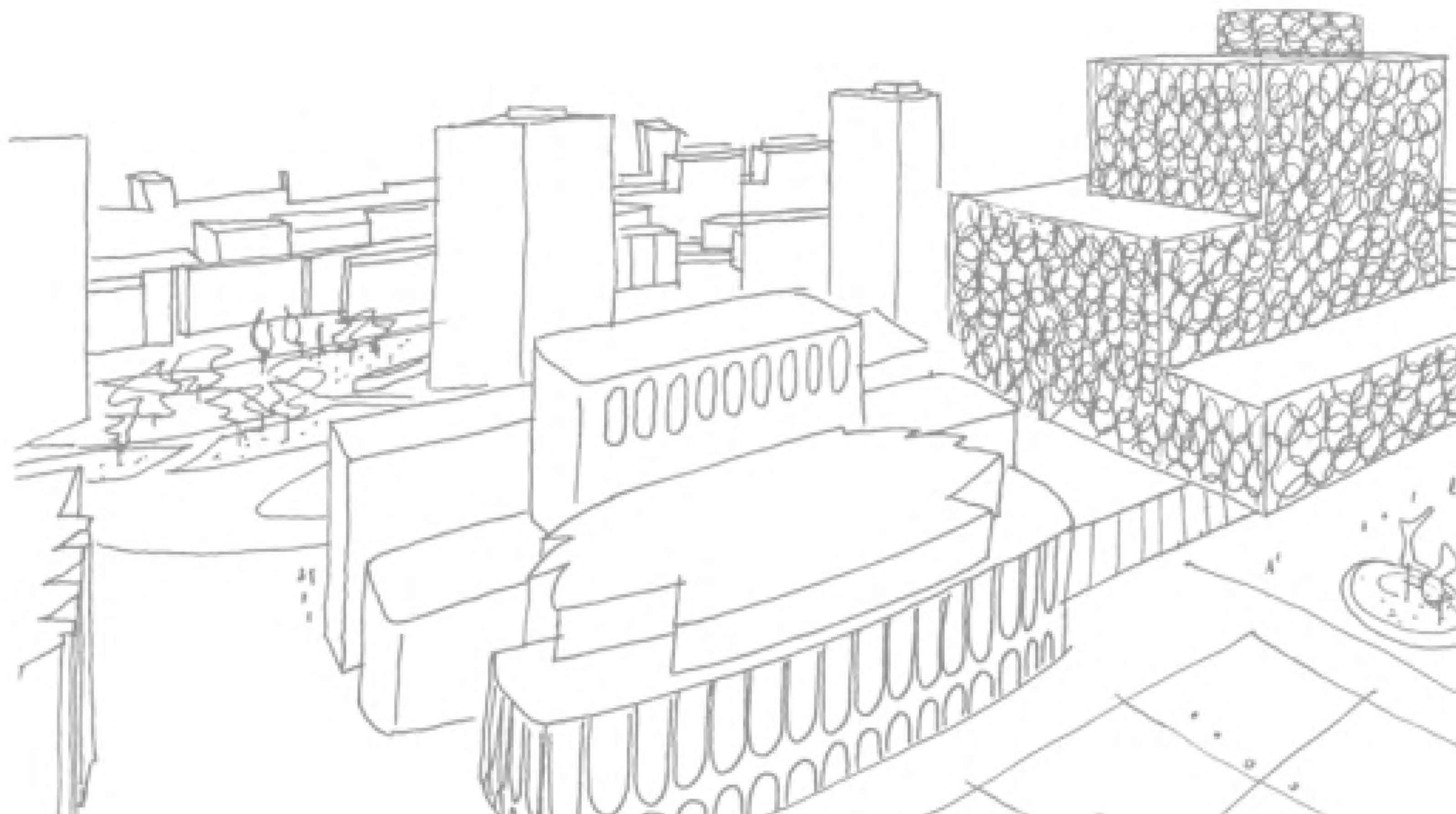
ARTIFICIAL to NATURAL!

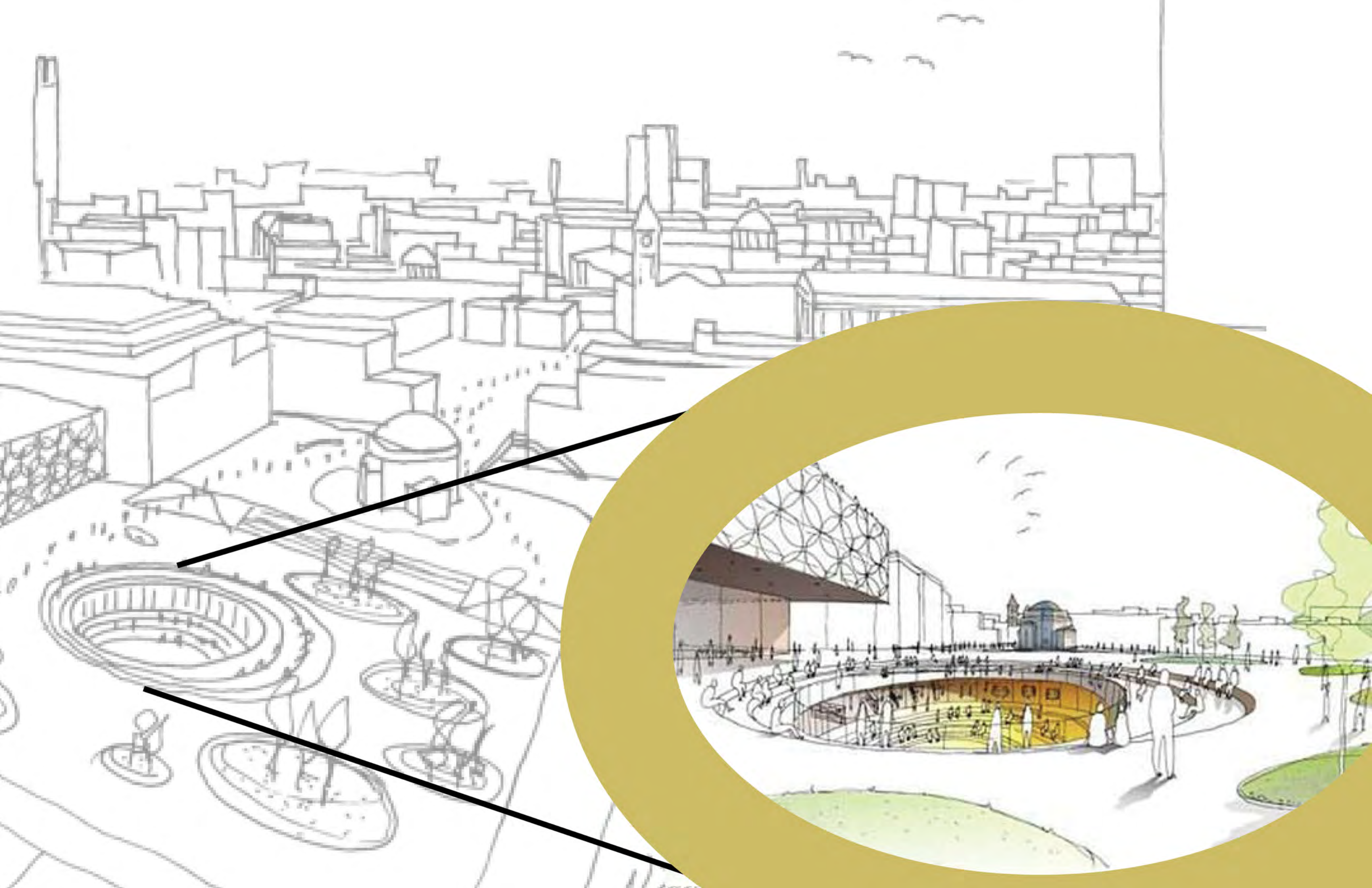
The canopy with an EFTE skin covered in a dot-matrix frit will allow the rooftop to be used for lectures, concerts, and other events, including the museum hopes, in the blazing hot summer months. The designers say that it is meant to mimic the dappled light of *a tree*.



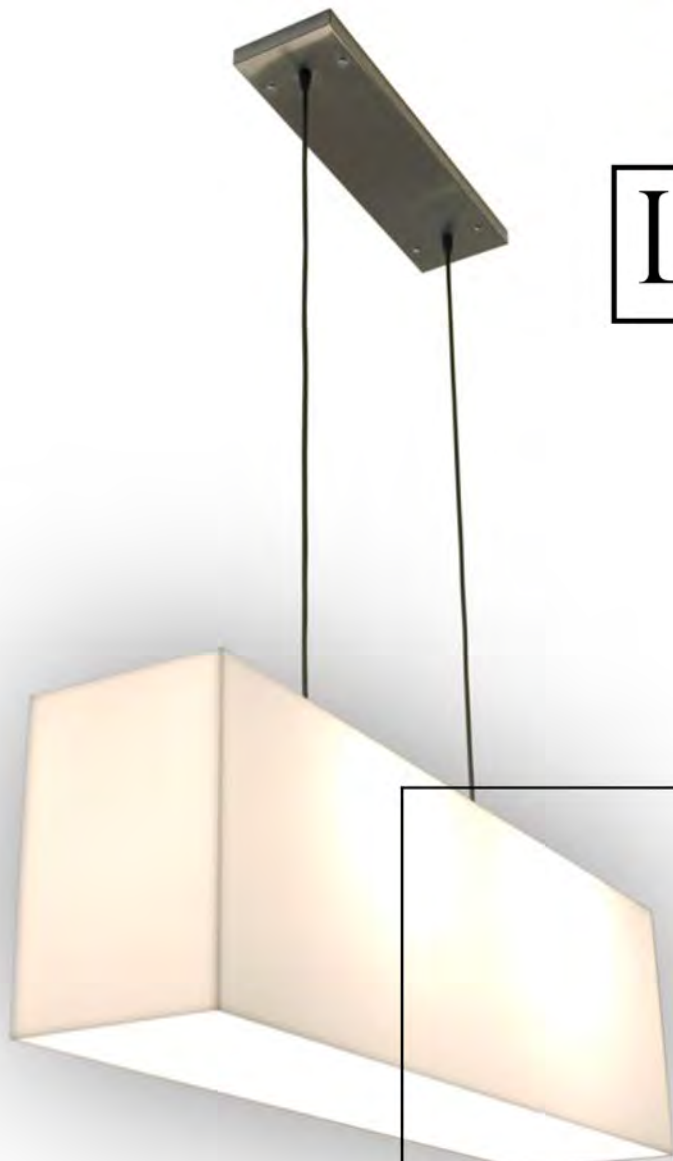


The curved canopy forms a perfect structure spanning 75 feet, made up of four arched points that meet at the center. From an aerial view, the canopy almost looks like a transparent tropical leaf surrounded by yellow. The canopy is composed of tubes six inches in diameter, light enough to sit on the roof without requiring reinforcement.





LIGHTING



elevation at mural wall



fixture dimensions

TASK LIGHTING
 Ughizer Casulla
 Evolution Incandescent
 Adjustable Acorn C449A
 20" high, 18-degree angle
 2.8 x 0.9 diameter spotlight

CUSTOM FIXTURE
 1/2" thick acrylic
 decorative fixture with
 LED strip lighting
 20" high, length variable

CABINET LIGHTING
 Philips Architectural
 Decorative C148
 Undercabinet Magnetic
 Track LED
 Black matte finish

WALL WASHERS
 Philips Ughizer
 Casulla Evolution
 Incandescent Lensed
 Wall Washer C470L
 8" Aperture PAR38
 reflective lens
 3' off of the wall, 9" high

Custom Fixture



Parts and Assembly

