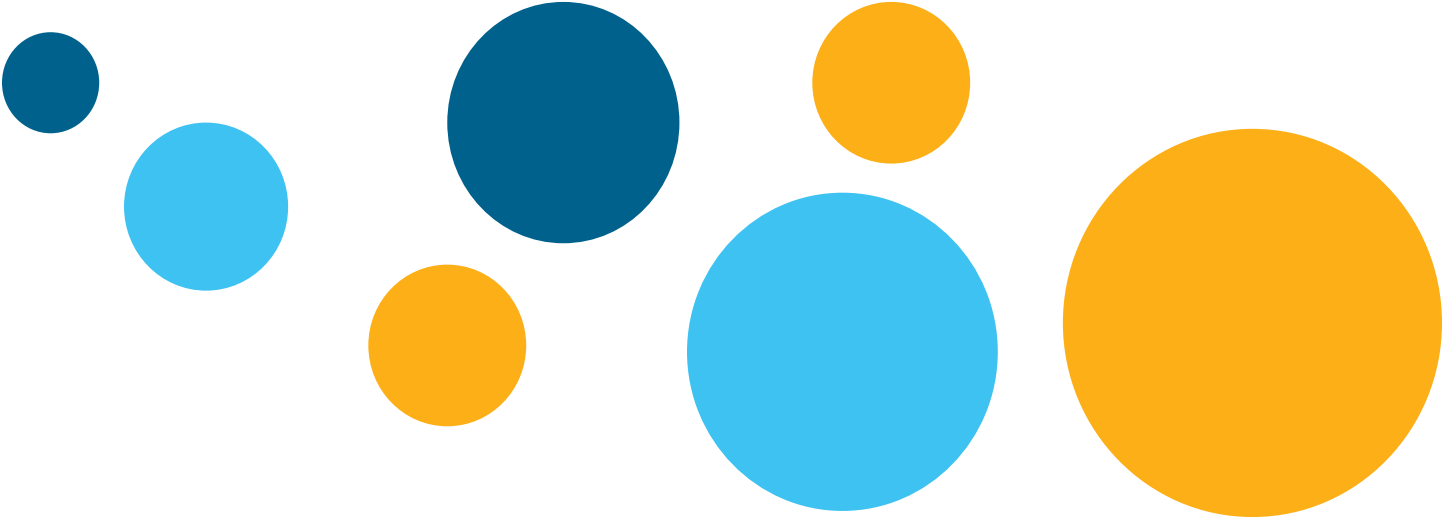


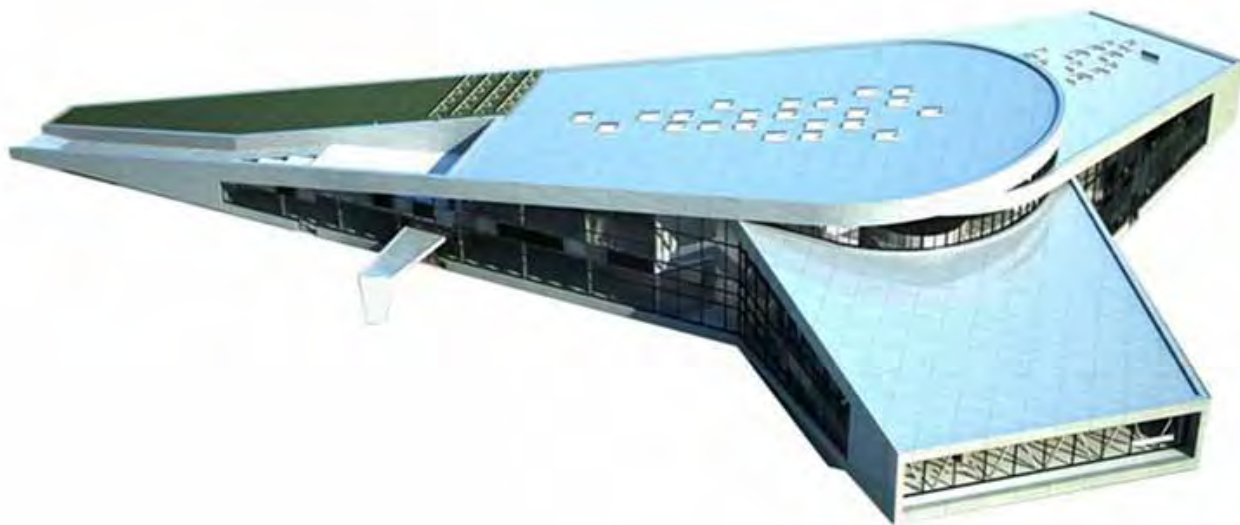


Children's Discovery Center Design Research

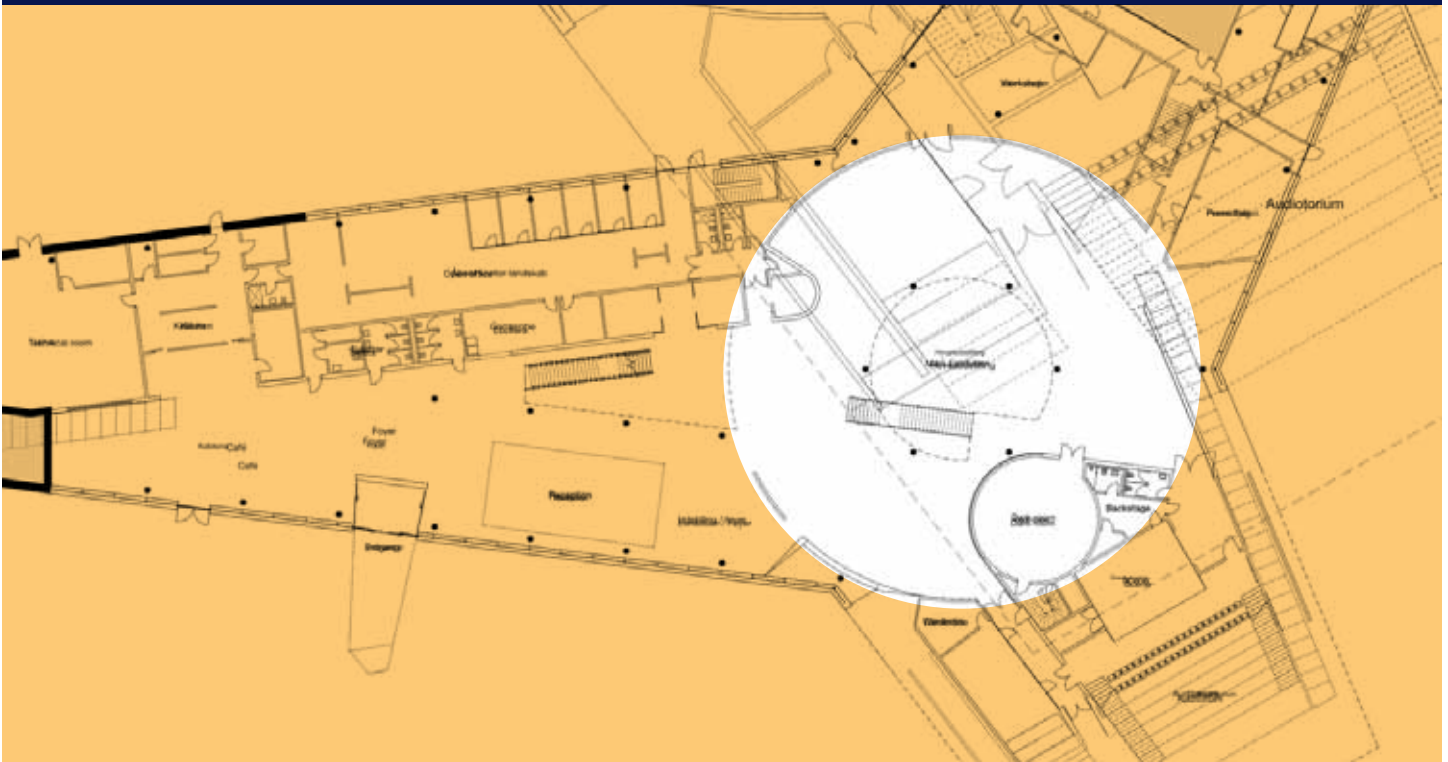
Elisabeth Smith



Case Study
Inspira Science
Centre
Gralum, Norway,
Designed by AART



Entry: The entry to Inspiria is a large central hub, open on both floors, giving visitors several options for where to go. The whole sequence is open and spacious, and full of natural light.

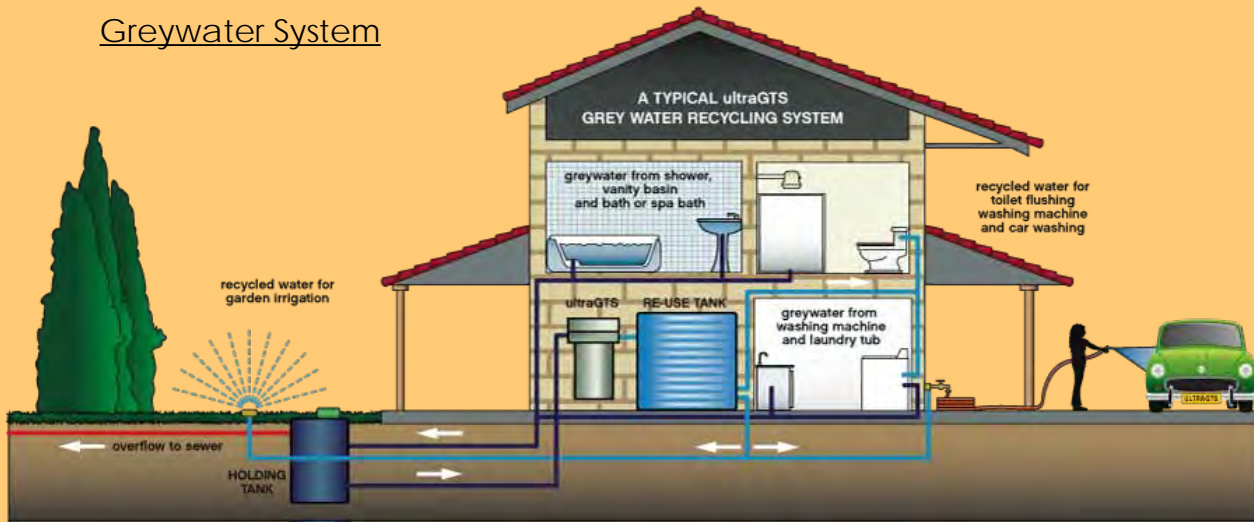


Environmentally Conscious Design

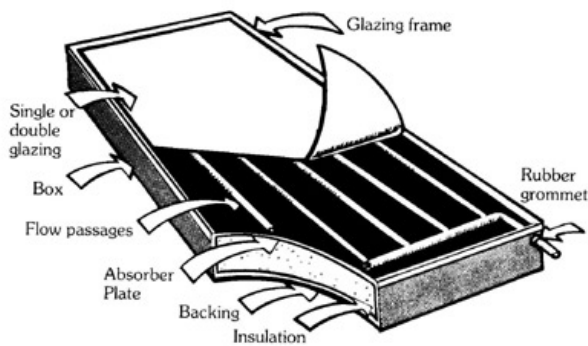
Inspira is an extremely eco-friendly building, and the systems used to produce and recycle energy and clean water are on display as exhibits as well as serving important functions.

Skylights, a wind turbine, greywater system, solar water heating system, and photovoltaic systems all reduce electricity costs and energy waste.

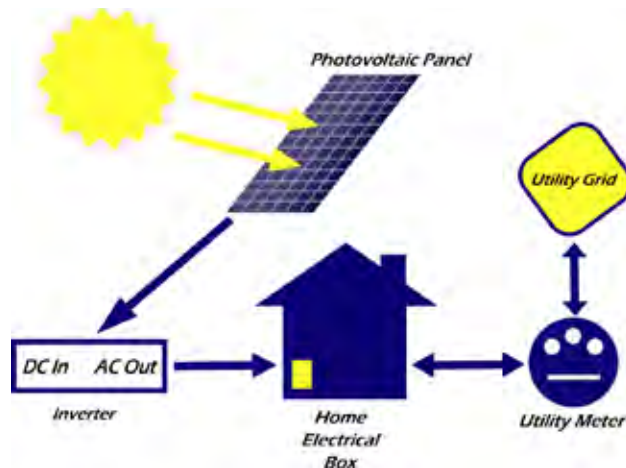
Greywater System



Solar Water Heating System



Photovoltaic System



Destinations and Circulation



Geometric Furnishings: Many of the attractions, as well as seating areas and spaces in general, are based on a cohesive, angular motif.



Functional Forms: Fun, informative exhibits are also used as centerpieces and aesthetic elements. This is used not only to appeal to the senses, but to entice visitors into exploring the Centre's attractions.



Open Floor Plan: The Centre is mainly open with few walls separating the main interactive spaces. Circulation is generated around the attractions, which are dotted around large, open rooms, leaving ample room for patrons to move around.