

THE PLAY PERCH

SYRACUSE, NEW YORK



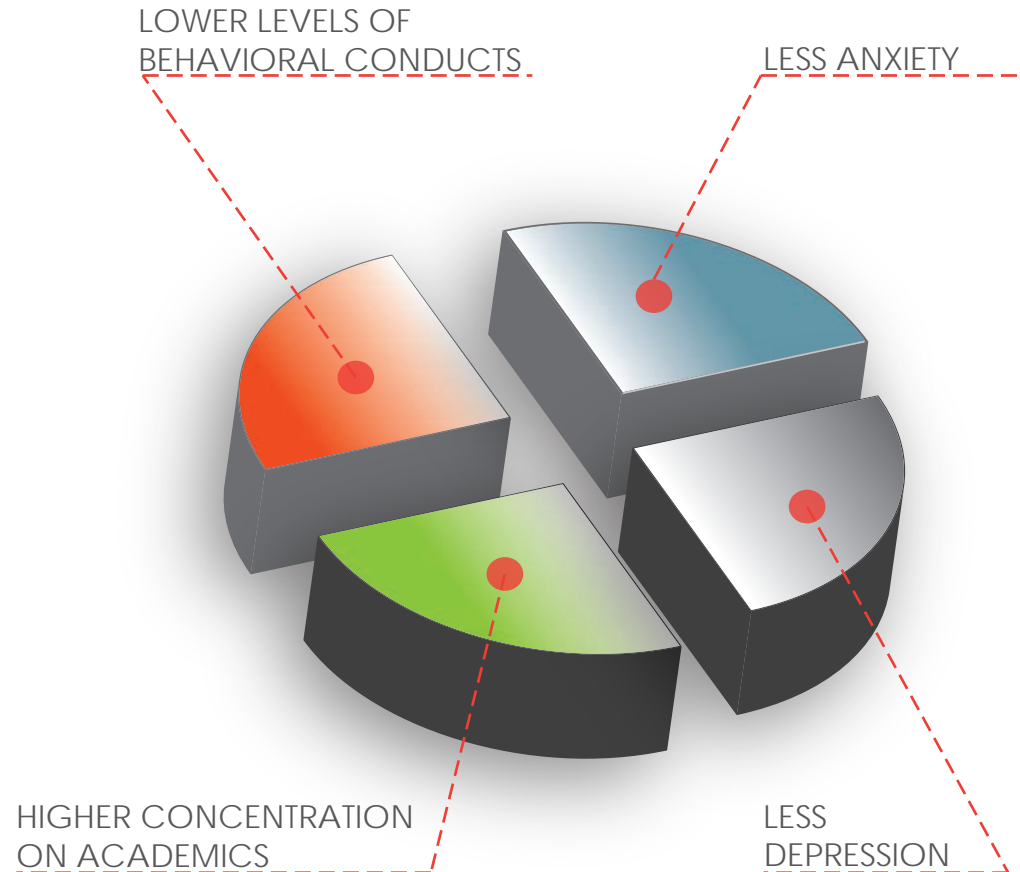
WHY JOWONIO PRESCHOOL?

PHILOSOPHY

The Jowonio School serves children from 3 to 6 years old, guided by the philosophy that students with special needs and traditional needs should be educated in an inclusive setting. Up to 30% of Jowonio students have some physical or mental disability, including autism, impaired vision, and limited mobility. The school attempts to provide an environment where all students may take part in as many class activities as possible.

The wooded escarpment behind the school allows Jowonio to address "*nature deficit disorder*;" relatively new research in the area of early childhood development suggests that less time spent outside and restricted access to nature negatively impact both behavior and health, and that in particular students with ADD are greatly assisted when they have access to the calm and quiet of an outdoor environmental setting

THE EFFECTS OF OUTDOOR PLAY ON CHILDREN



CONCEPT

STAR WARS



+

EASTERN BLUEBIRD



=

PLAY PERCH



DESIGN

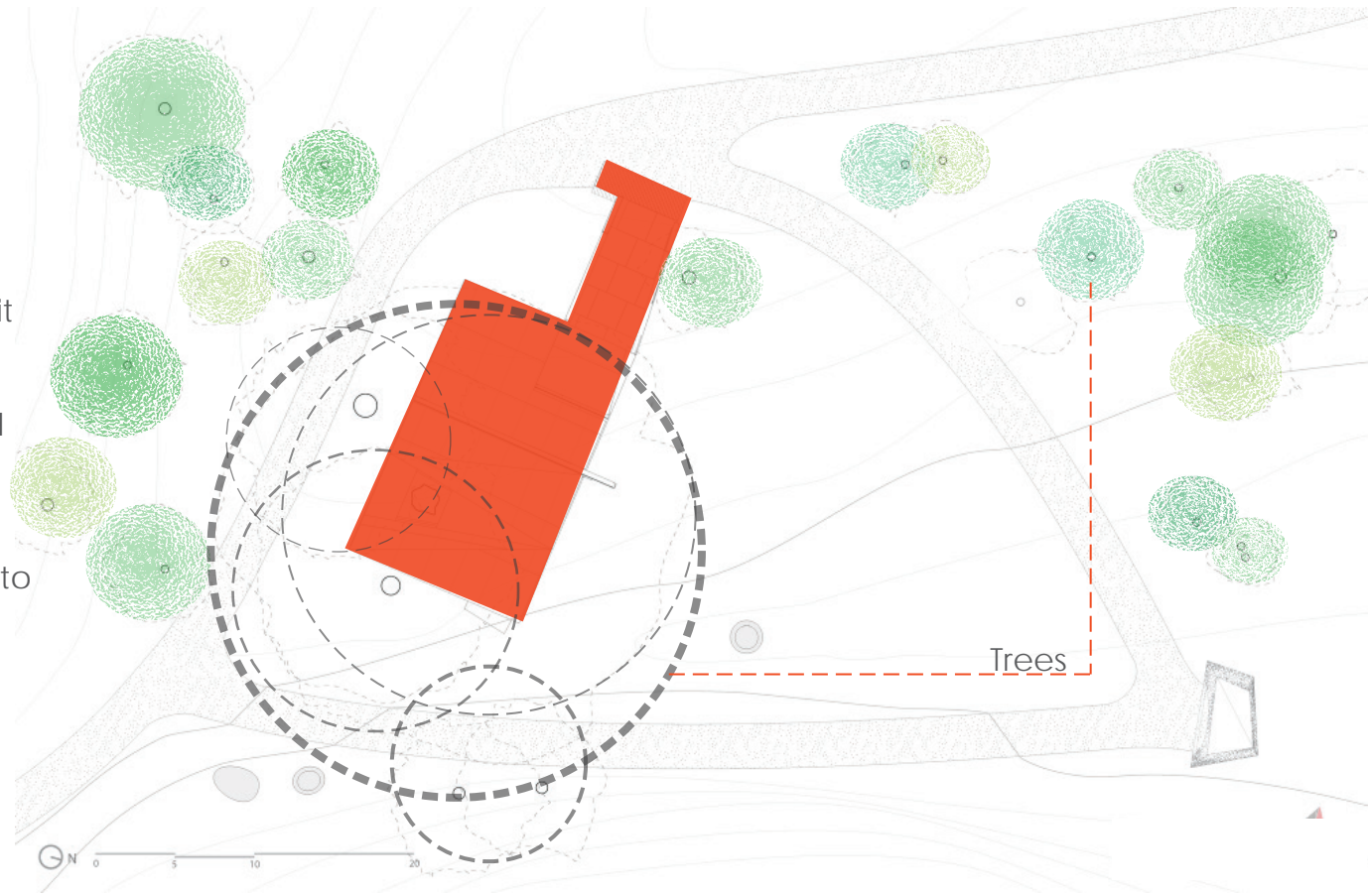
The students settled on a metaphorical design concept inspired by the Eastern bluebird (the official New York State bird) combined with the giant AT-AT (All-Terrain Armored Transport) of Star Wars fame.

"THE ELEVATED VANTAGE POINT
GIVES THEM A SENSE OF
ADVENTURE..."

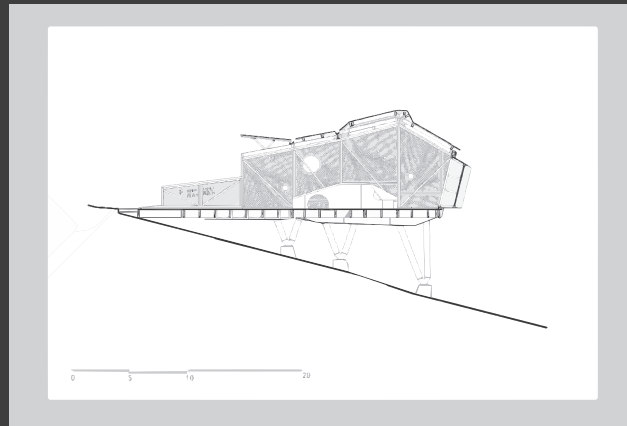
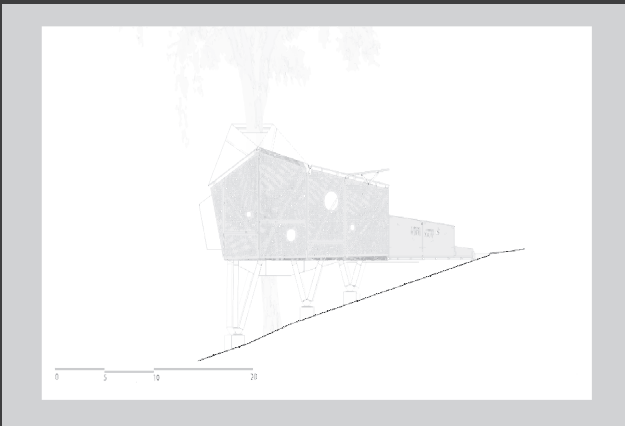
SITE

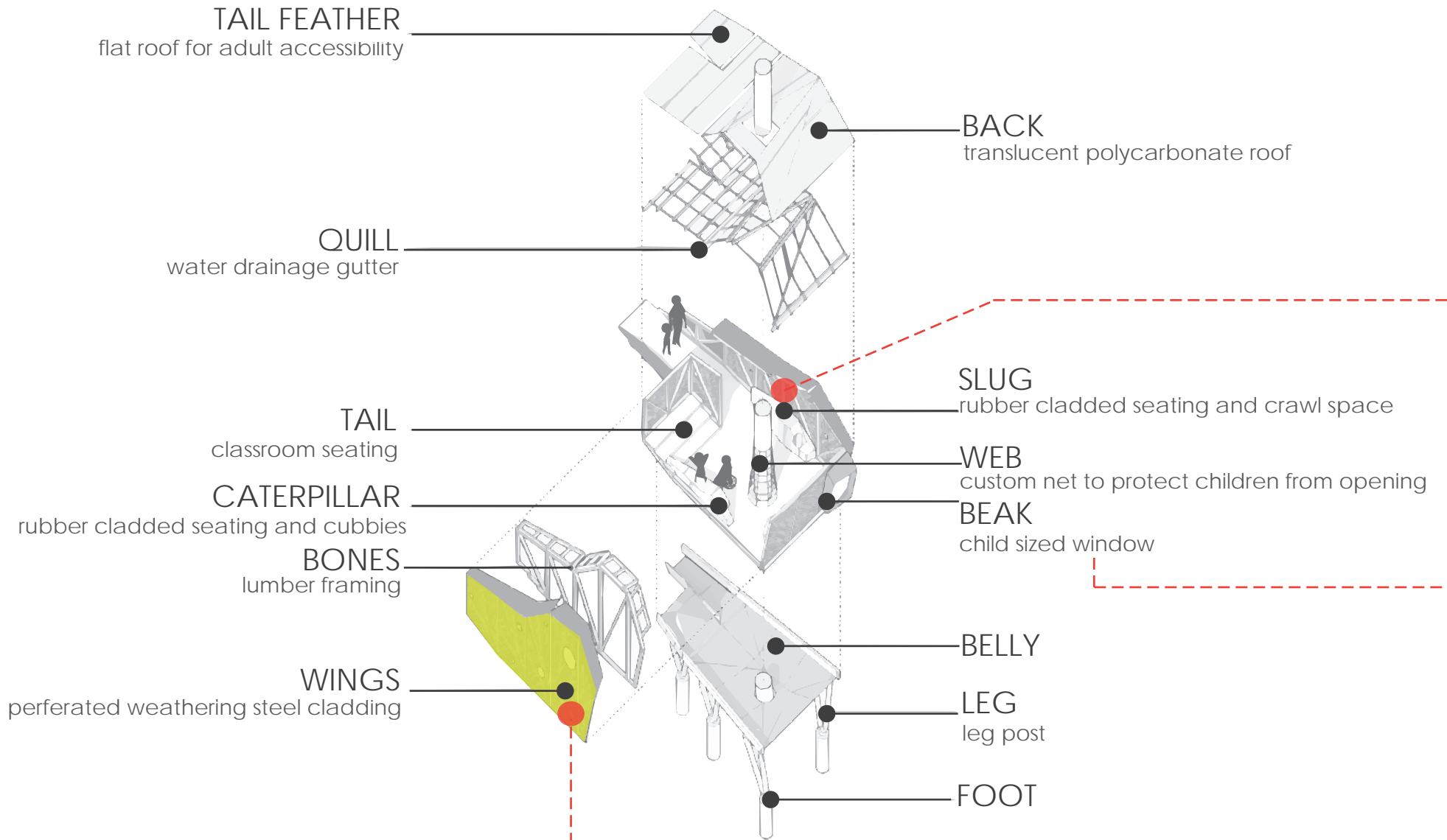
LANDSCAPE

The wooded area around the school allows Jowonio to address "nature deficit disorder;" relatively new research in the area of early childhood development suggests that less time spent outside and restricted access to nature negatively impact both behavior and health, and that in particular students with ADD are greatly assisted when they have access to the calm and quiet of an outdoor environmental setting.



ELEVATION - SECTION - FLOOR PLANS





MATERIALS

The design embeds environmental education in an outdoor pavilion, incorporating sun, wind, water management and the like to educate young children about natural forces. The interior design consists of a blue tile floor suitable for playground use that continues over the top of the two seating-tunnel hybrid furniture pieces dubbed “the caterpillar” and “the slug.” The tunnel is lined with green HDPE panels etched with the footprints of local animals. The brilliantly colored interior contrasts with the subtle hues of the exterior materials.

INTERIOR →



The large copper clad cantilevered window, the beak, is a polycarbonate sheet that tilts out to maximize the children’s view from the highest point in the plan.

BEAK →



The project is meant to age naturally in the severe weather of the Syracuse woods: exterior rusted steel panels will be allowed to weather to orange before being waxed to minimize transfer of rust to users’ hands and copper sheets on the cantilevered overlook will gain a deep green patina. The Play Perch is weather resistant rather than weather proof and the walls consist of timber frames with perforated weathering steel panels. The perforations are patterned after the feathers of a bird with variations in the aperture size to create windows.

EXTERIOR →

