



WHY THIS BUILDING

The CMA uses color to entice children and establish flow. The mix between static and motor based activities gives kids the playful atmosphere without taking the emphasis off learning about art.



UPON ENTERING

The traditional white wall and concrete floor of an art museum greet the visitors upon their arrival. The art museum could be too sterile for children or it could introduce them to the art world in a realistic setting.



CHILDREN'S MUSEUM OF THE ARTS

NEW YORK, NY

USE OF COLOR



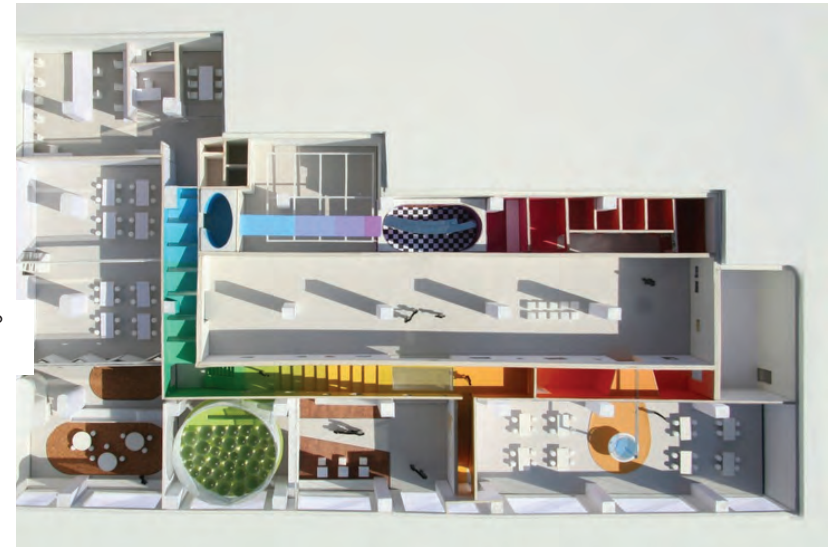
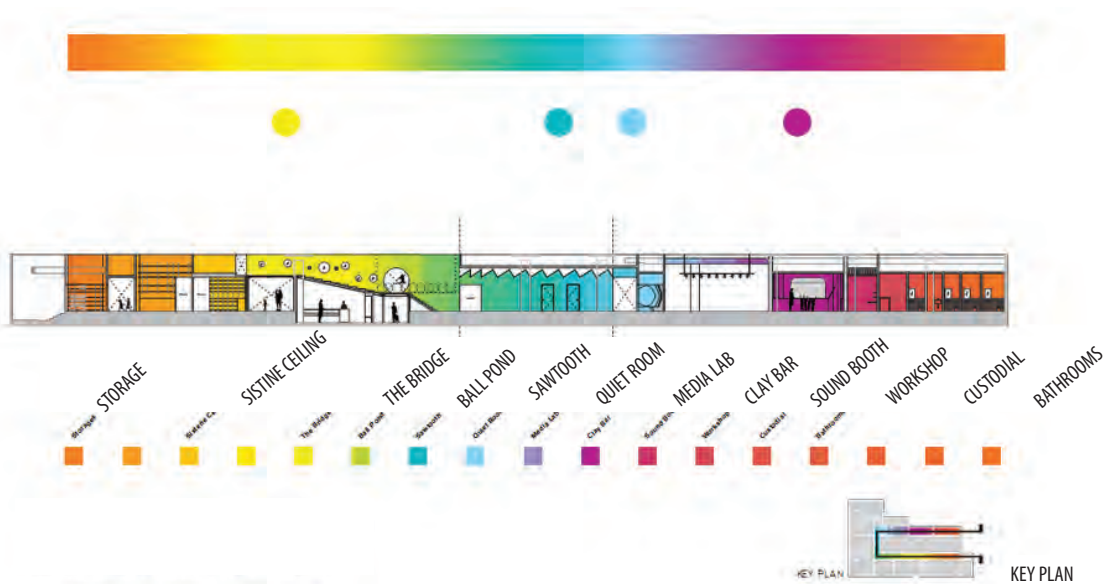
ORGANIZATION BY COLOR

The transitional spaces have activities, giving the hallways a purpose beyond circulation and utilizing necessary space, while also breaking up the monotony of white studios and gallery, giving the building a playful attitude.

THE FLOORPLAN

Floorplan of the building shows how the colors wrap around the gallery and art studios. The employee spaces are tucked in the back of the building, but restrooms on the top right stay a part of the public space. The gallery space in the center has a traditional feel with tall ceilings to show off the full extent of the artwork made on the museum, and the studios along the outside of the building allow for a lot of daylight, while also engaging the street.

UNROLLED SECTION THROUGH ACTIVITY ZONE



A VARIETY OF ACTIVITY



DIFFERENT AGE GROUPS

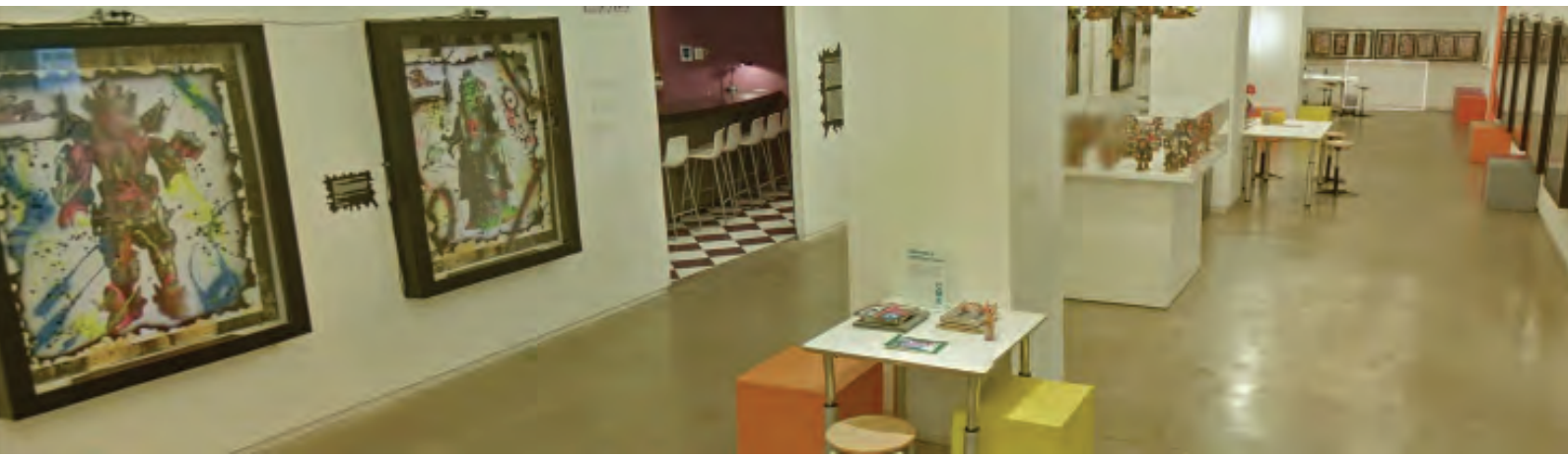
The ball pit upstairs exemplifies the idea that you need to vary the types of activities for various age groups. The balls provide a fun space for a younger crowd and the spaces like the sound room appeal to an older age group.

LEVELS OF EXERTION

An important idea to keep in mind with the discovery center project is that teachers need a place to sit a class and giving them a universal project to work on, similar to the art museums studio rooms with tables and chairs for children to engage in one activity. With that, the more playful aspects need to make themselves apparent to combat restlessness.

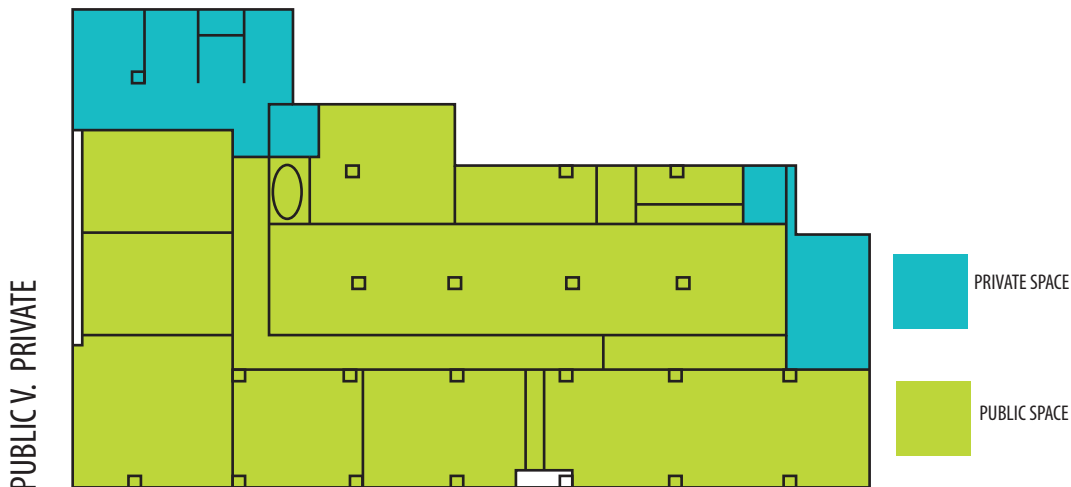


CIRCULATION AND SPACE



CIRCULATION

The rainbow activities circulate around the gallery spaces. The types of spaces vary from quiet rooms (blue) to ball rooms (green) that can be seen from an exterior window. The Clay bar (purple) is there for kids to sit at and create clay sculptures. All of these more active areas add interest to an otherwise white space. The circulation is easy to follow along with, making it friendly for kids too young to read signs.



USE FO THE SPACE

A majority of the building is dedicated to public space with small offices in the back of the building. This works for the number of employees, but I think if the museum were any larger, they would need more employee dedicated space. The Gallery runs down the middle of the space and you need through it to get to many rooms. This principle puts the focus on art. This has a very different approach than COSI with its large sparse hallways.