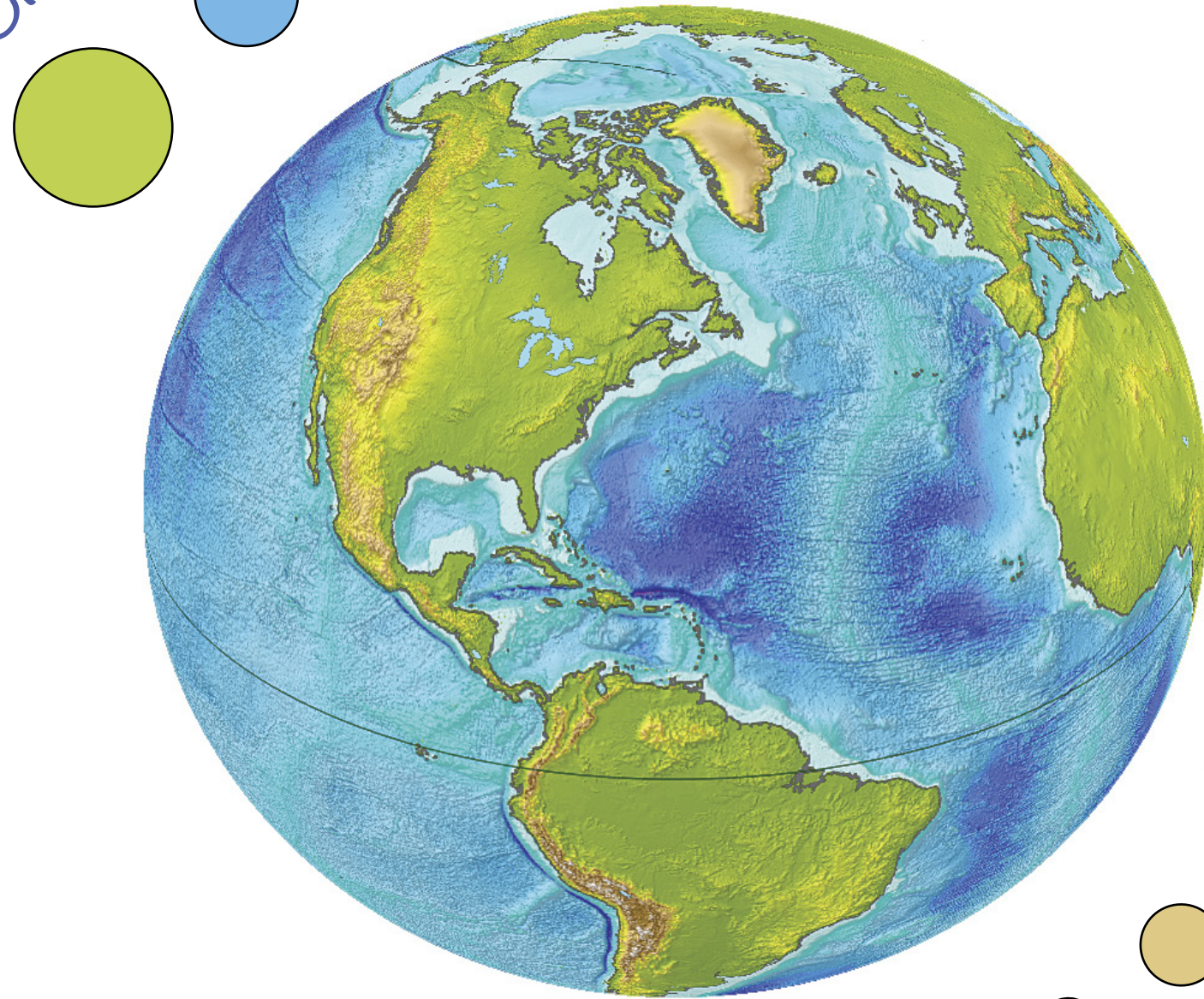


# Cincinnati Children's Center



## project

The Cincinnati Children's Center combines basic lessons taught in the classroom and an interactive conservatory to bring education to life. The building derives its form from the Brooklyn Botanic Garden Visitor's Center in New York. This project bridges the gaps between humans and animals, our climate and the most extreme conditions in the world, and on a smaller scale, Cincinnati and the world at large. We had to design a structure, about 10,000 square feet in size, and make a center for the Lower Price Hill community to enjoy and learn from.

## goals

I want this space to feel inviting and fun. Each space should lead you to the next, building on the knowledge taught in the exhibits before. The order of the exhibits does not matter, leaving the path up to the patrons. The CCC will teach about climate extremes through a mixture of interactive windows, conservatory elements and physical relationships to the design elements.

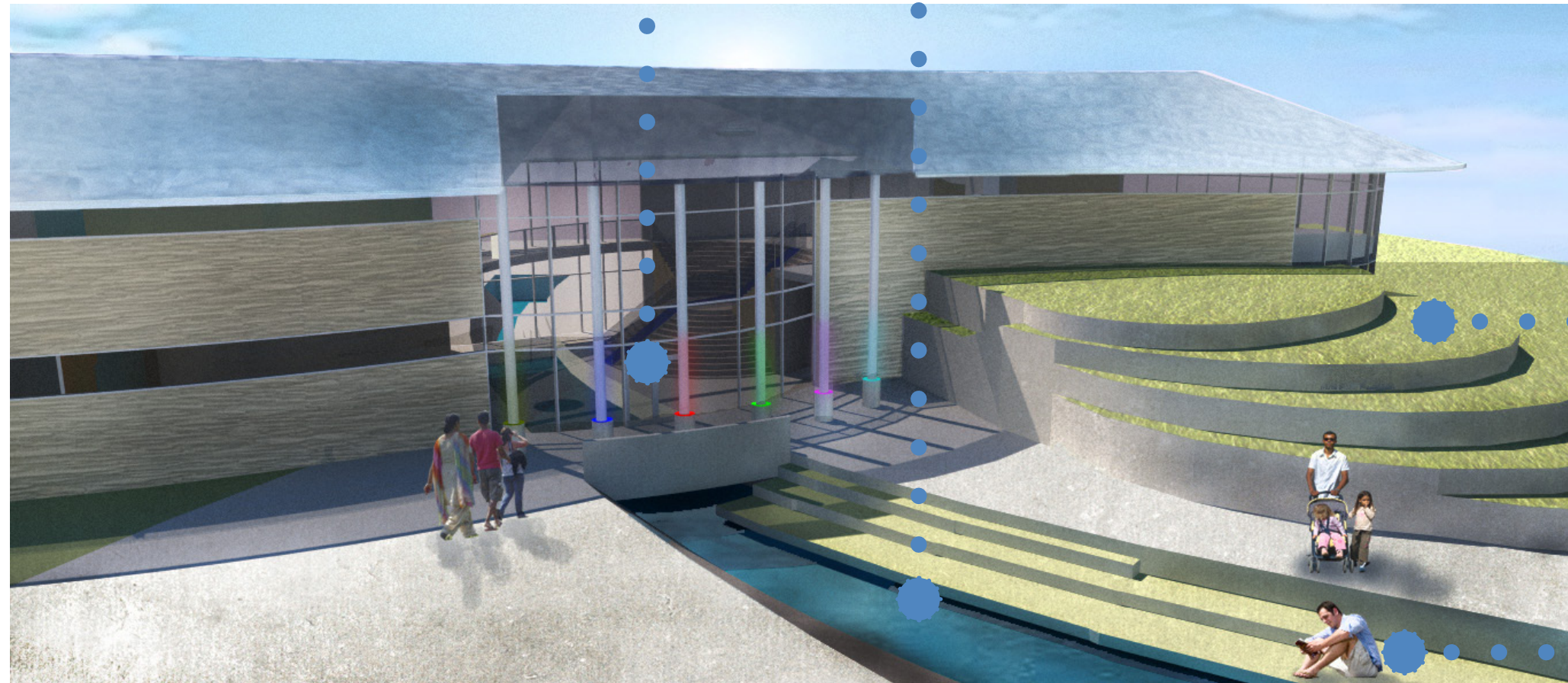
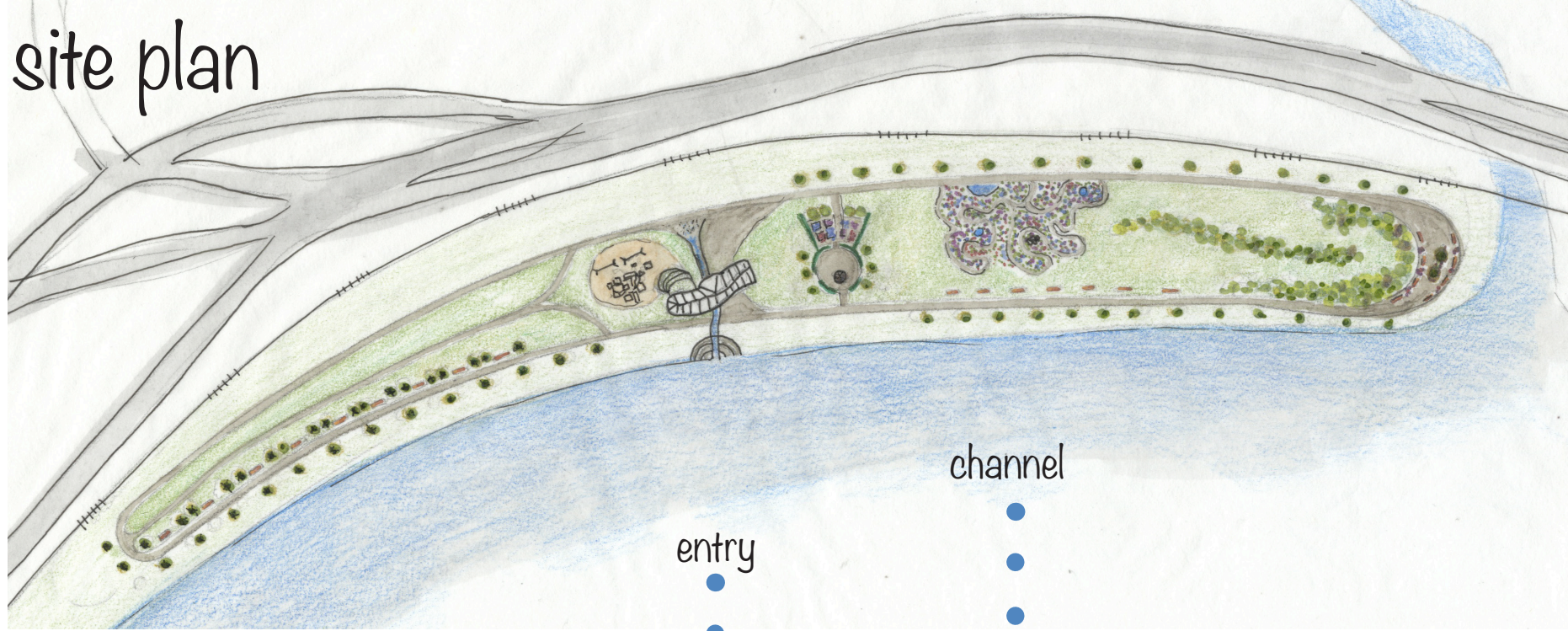




# site

Currently, the site lies undeveloped on the waterfront of the Lower Price Hill district in Cincinnati, Ohio. Taking cues from other successful waterfronts in places I have visited, this site will have swinging benches along the river, a running path around the whole park, and a man made channel of concrete running through the site and under the lobby of my Children's Center, serving as a place to gather and as water runoff from the surrounding park. There is a gathering space with gazebo close to the building and a meandering formal garden next to that. The steps to the side of the building allow for an underground portion in the caves exhibit and for a playscape close to the structure.

# site plan



stepped hill

channel seating



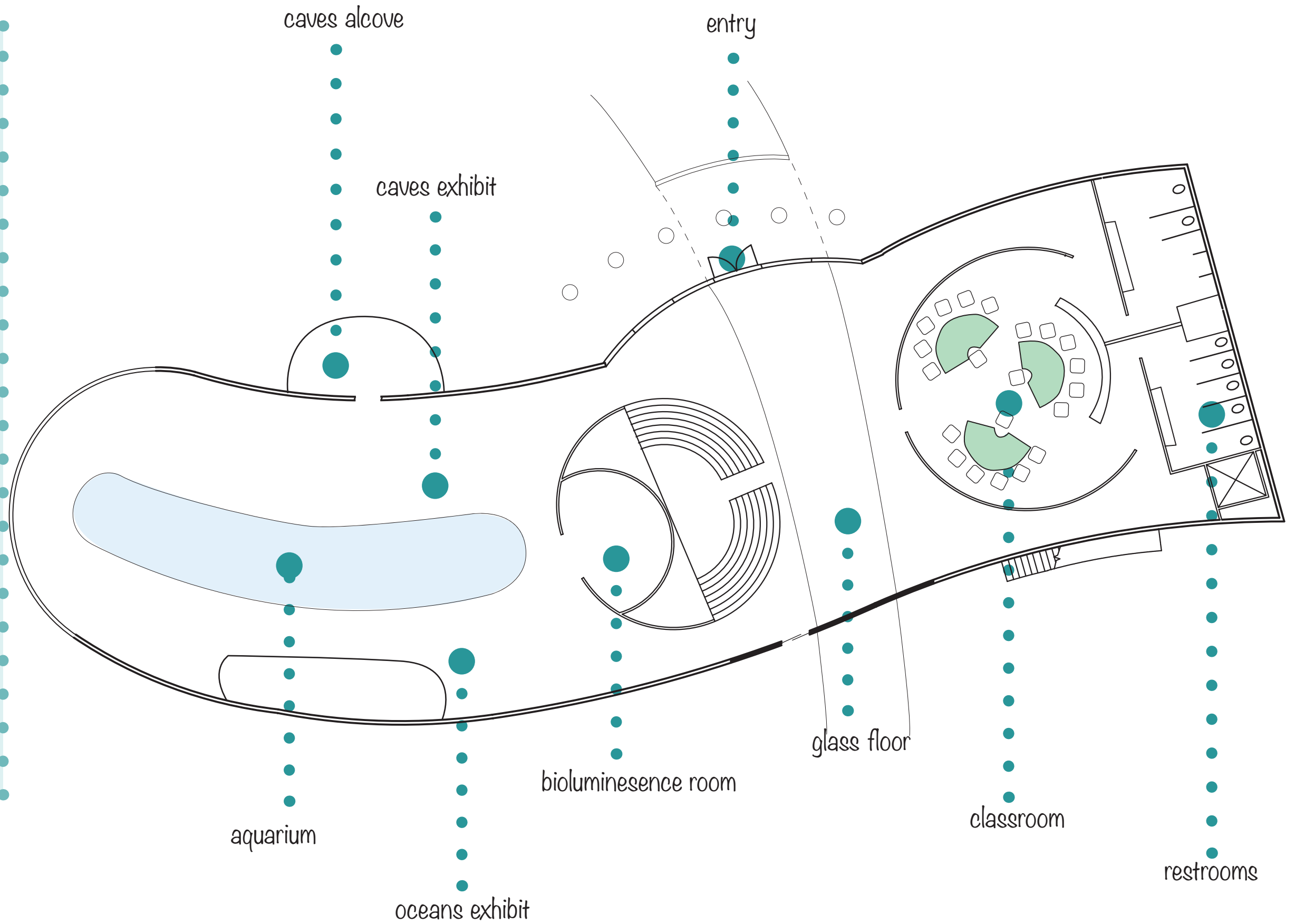
# first floor

Upon entering the lobby on the first floor, visitors see through to the river beyond. To the right, a large circular staircase with a slide, and to the left, a similarly circular classroom and access to bathrooms.

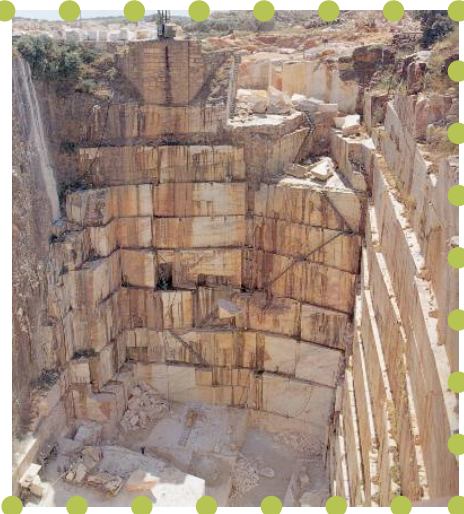
Classroom: Seats 24  
Experiments with supervision

Aquarium: 67878 gallon tank

Restrooms: 5 stalls in each







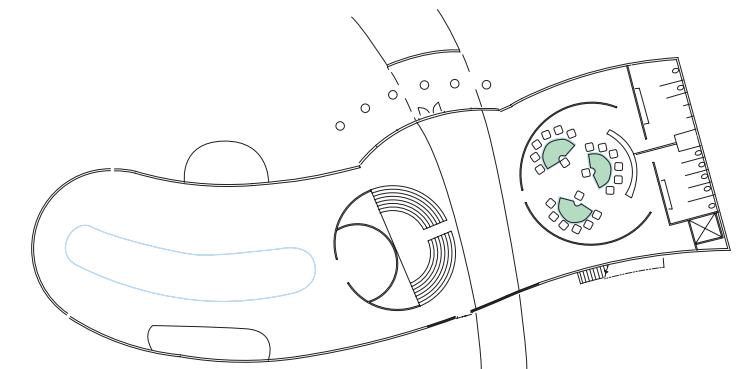
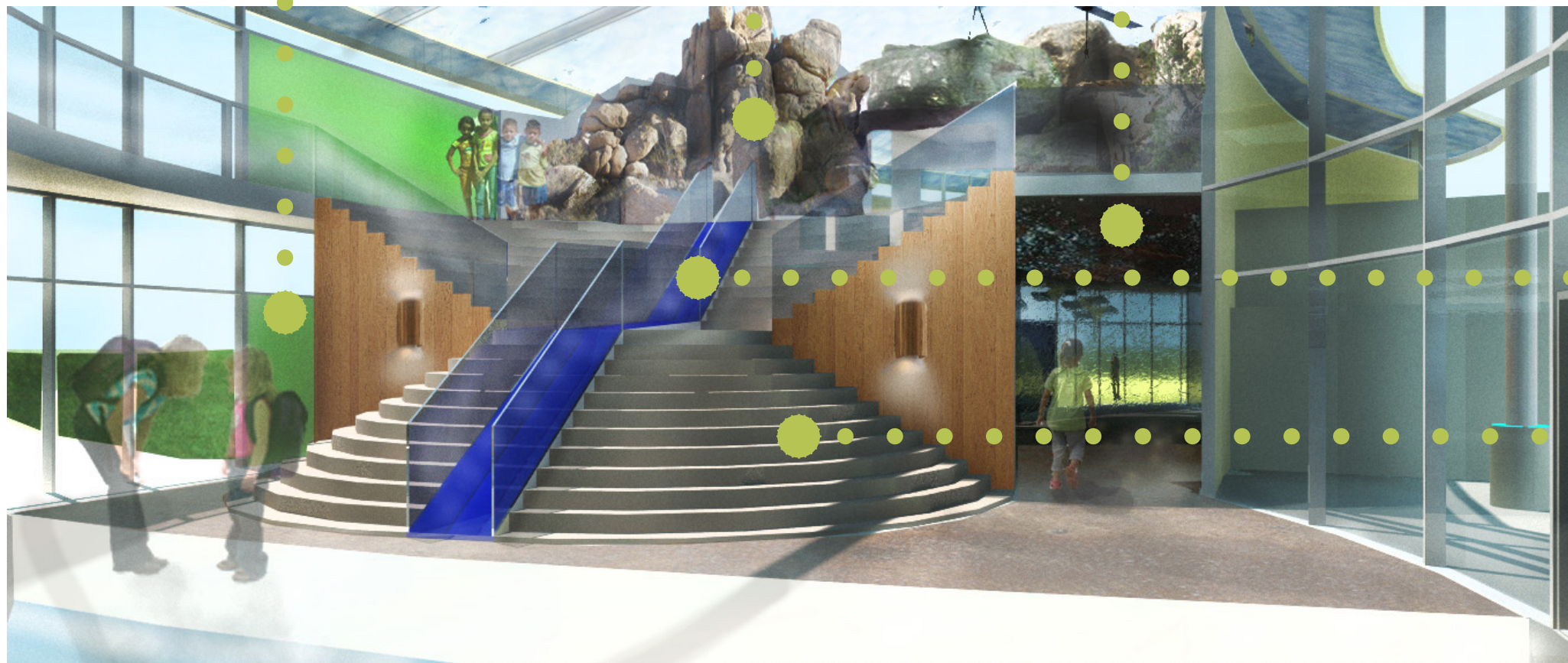
# stairs

The stairs unite all the spaces, physically and visually. The stairs create a hub in the center of the building where people will return to after each exhibit. The central staircase is made of granite to evoke the mountain form it leads up to on the second floor. The “river” down the center cuts through the mountain as it would in the natural world, creating caves underground and eventually leading to the ocean. This circular element controls flow and works as a learning tool, setting up the entire building organization.

mountains divider

through to oceans

through to caves



slide

granite stairs









# caves

The caves exhibit gives students the opportunity to explore one of the least explored parts of the world. They can see the bioluminescence exhibit under the stairs or the cave alcove. The temperature and level of light will reflect the caves actual atmosphere. The lighting is dim, but the glow worm lights on the ceiling create a path for patrons to follow towards the light at the back of the room.

aquarium

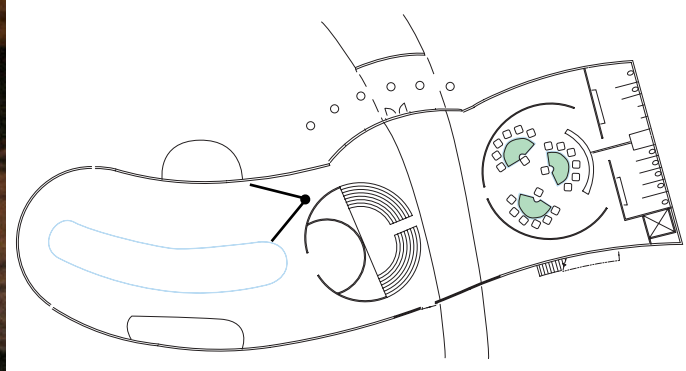
glow worm lights



stalacites/  
stalagmites

interactive windows

cave alcove



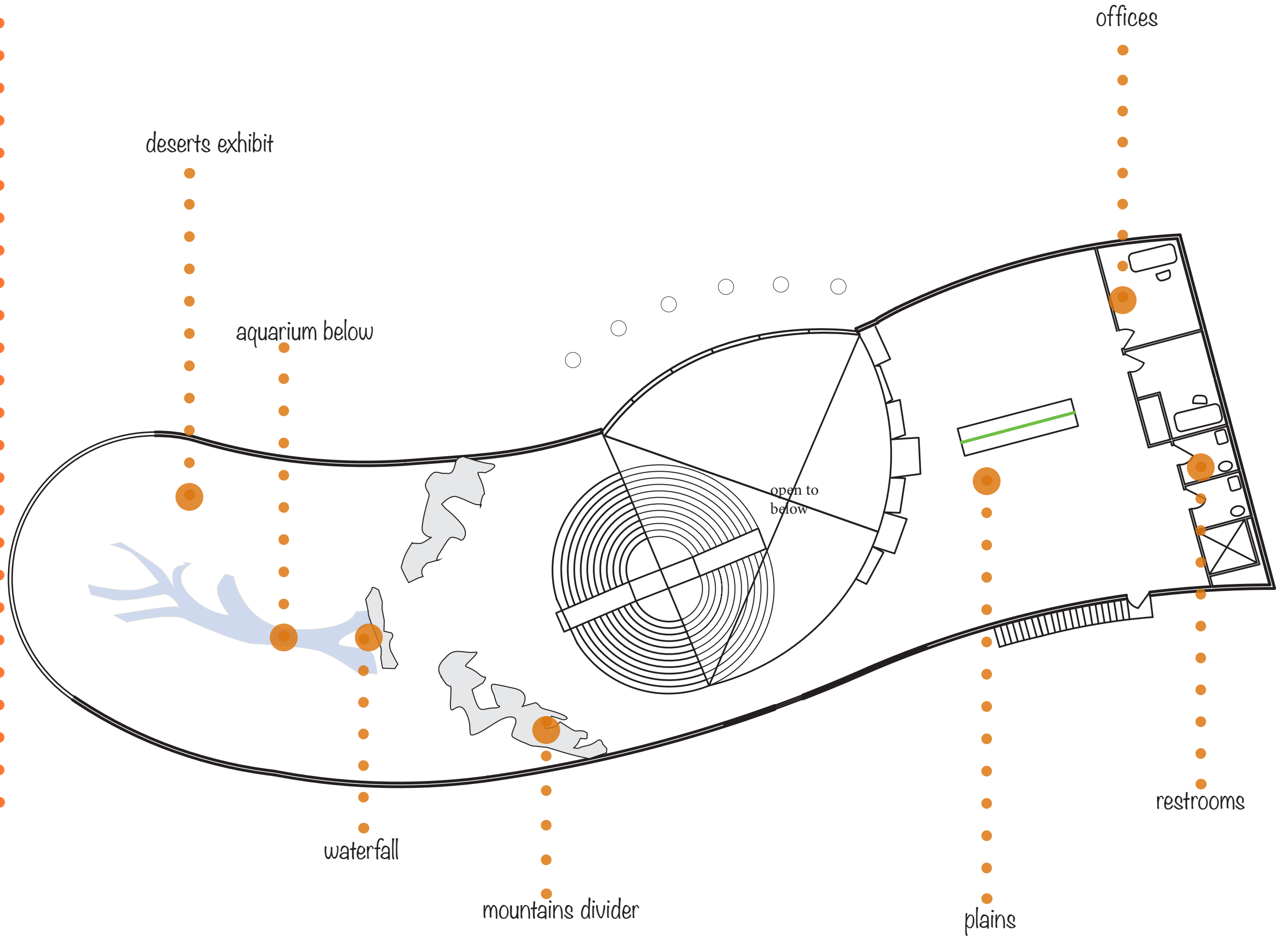


# second floor

The second floor houses the above ground biomes. Plains, mountains and deserts span the open plan with a large, conservatory roof above. Two offices sit along the East wall along with two family restrooms and the elevator. A fire stair through the plains exhibit hugs the facade and gives direct access to the south side of the building.

2 Classrooms

2 Single toilet restrooms







# deserts

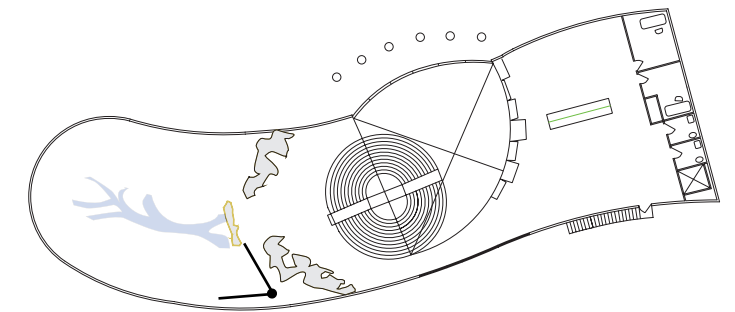
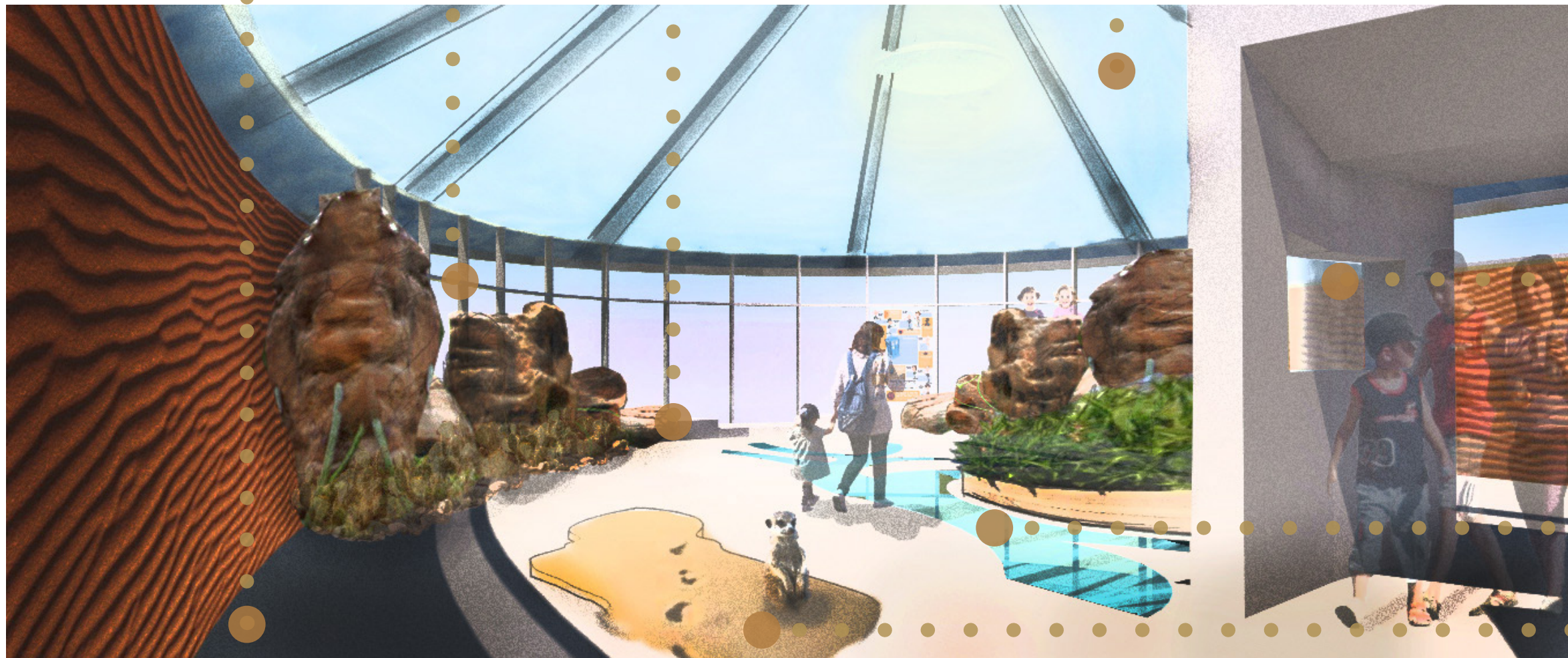
The deserts exhibit lies beyond the mountain wall, demonstrating how the rainshadow effect would work in nature. This room has teh most light. To control the heat, the roof is smart glass on its own power system, so when teh room gets warm, the glass will frost. The walls resemble sand dunes and the floor is made of sandstone to evoke the feeling of the environment. The oasis in the center shows a different display of plants, and how animals gather around a water source.

interactive windows

sandstone floor

stepped desert

smart glass roof



waterfall

oasis (aquarium below)

animal platform





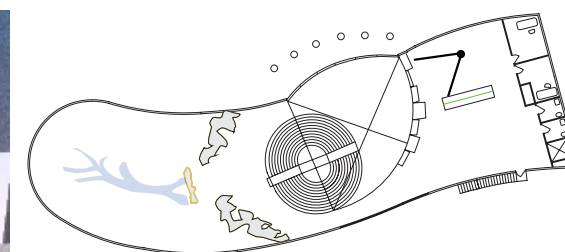
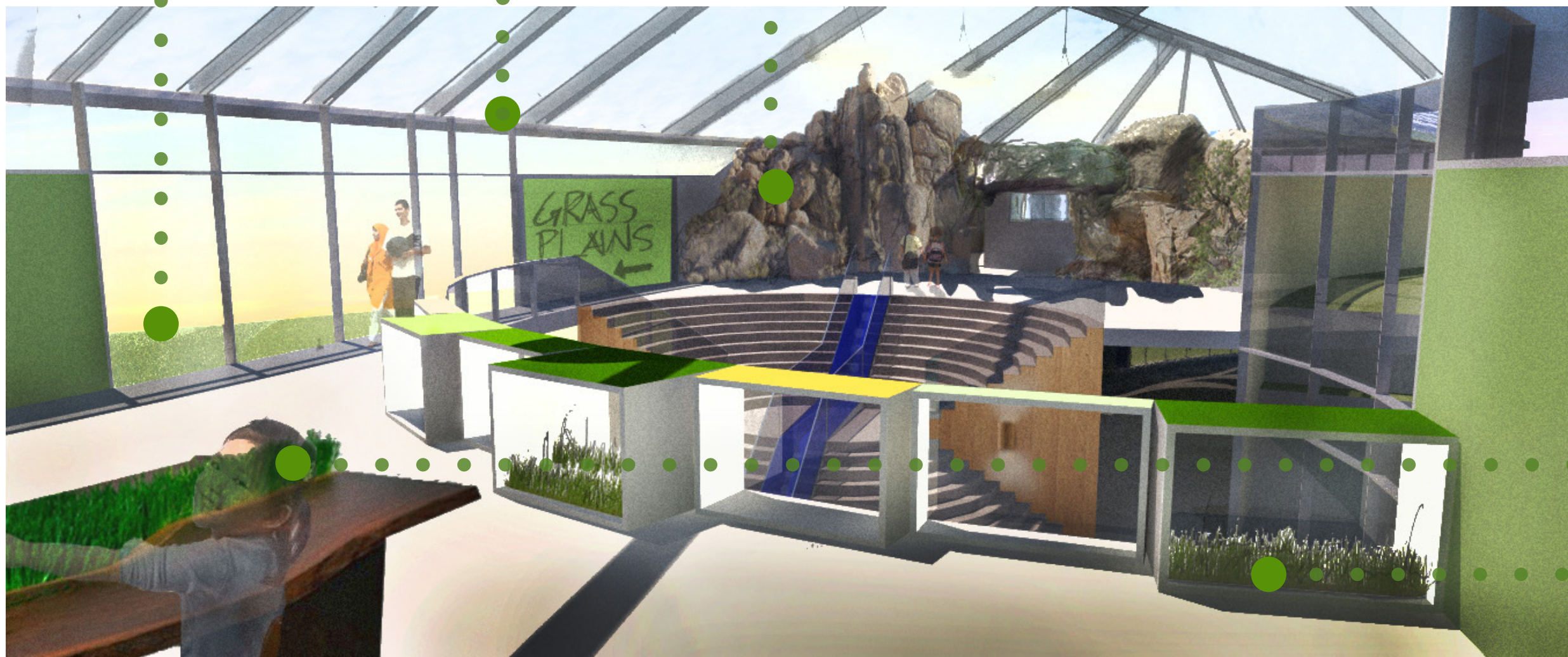
## plains and mountains

The upstairs has three parts, plains, mountains and deserts. The plains have a variety of grasses and smaller animals. Also featured in this exhibit are the wild animals of africa such as lions and zebras. The mountains feel real, and carry up the visual metaphor from the stairs. Through the mountains kids will walk past a waterfall to the desert beyond.

view to river

smart glass roof

mountains divider

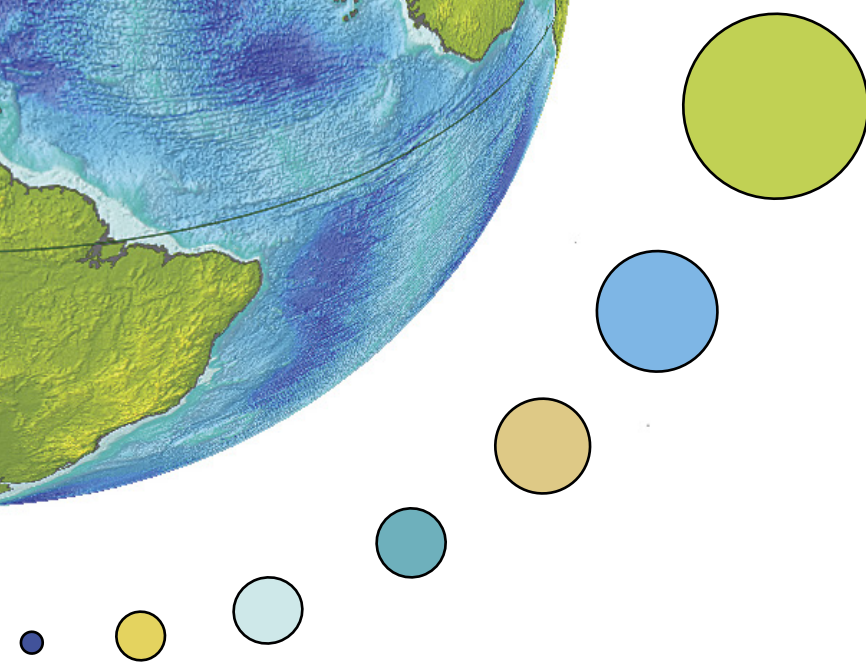
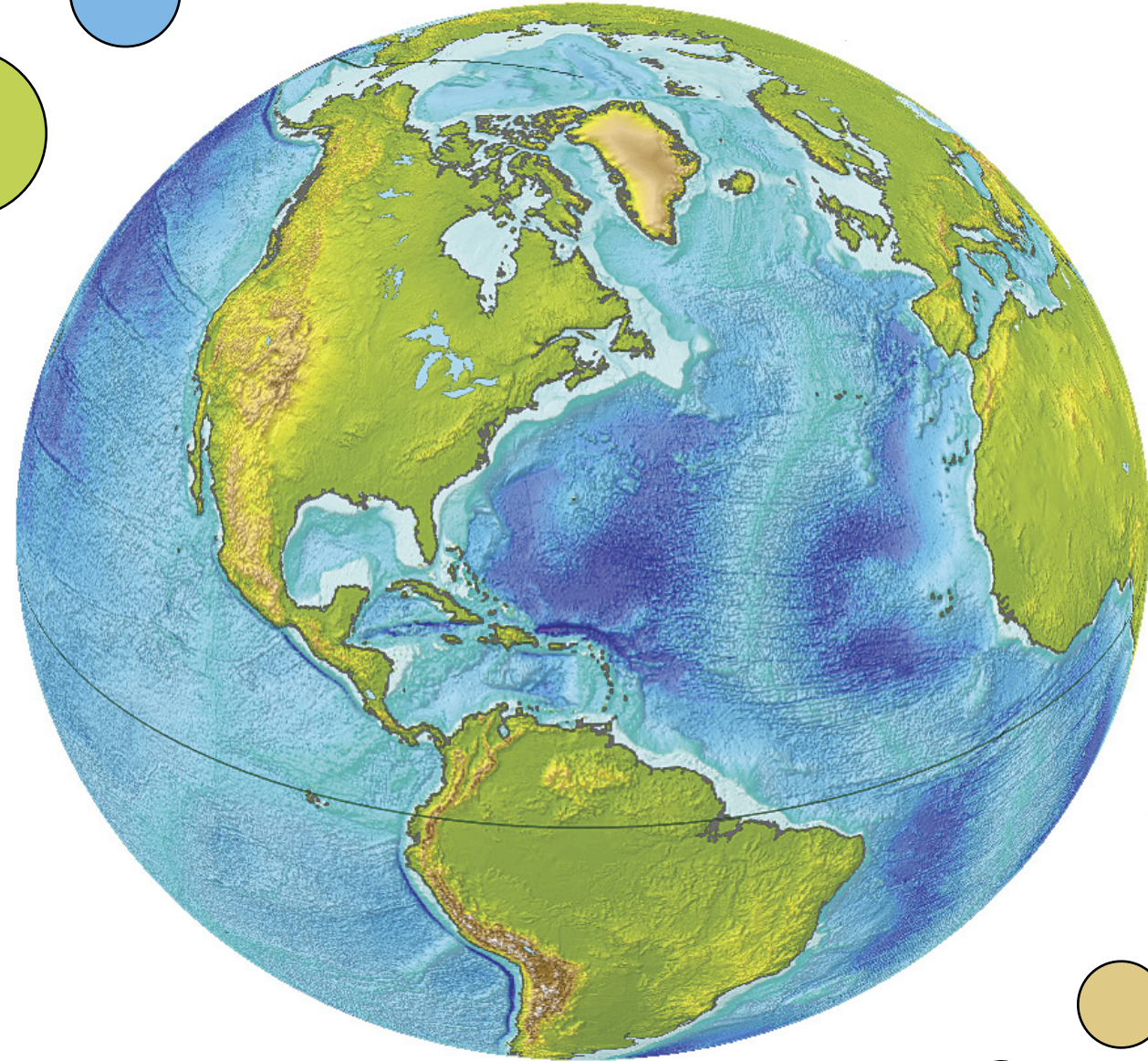
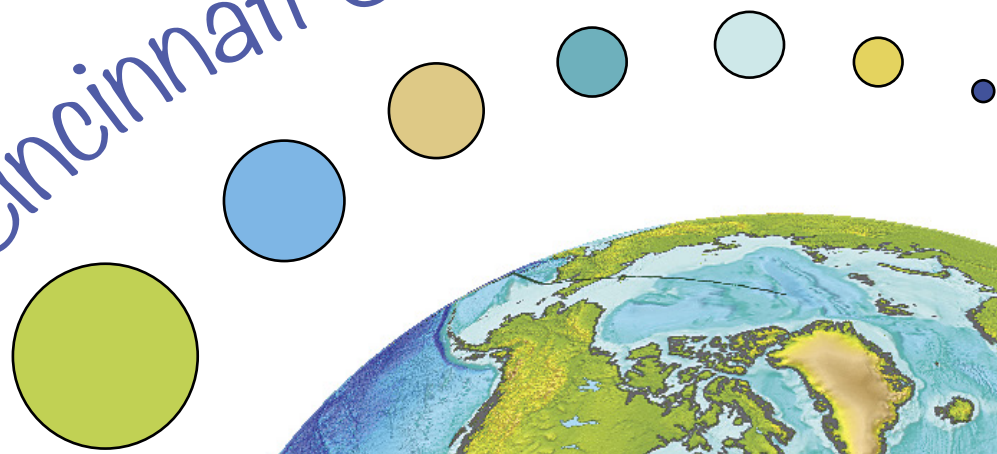


play table

grasses displayed



Cincinnati Children's Center



thank you

questions?