

The image captures the interior of the Exeter Library, designed by Louis Kahn. The space is characterized by its massive, light-colored concrete structural elements, including thick beams and columns that create a sense of scale and permanence. The walls and ceiling are finished with light-colored wood paneling, which adds warmth to the otherwise stark concrete. A prominent feature is a long, narrow skylight that runs along the top of a concrete beam, casting a soft, golden light into the space. The floor is also finished with wood, and a large, dark wooden circular element is visible in the lower right corner. The overall atmosphere is one of quiet grandeur and architectural precision.

LOUIS KAHN'S EXETER LIBRARY



CONTEXT & MATERIALITY

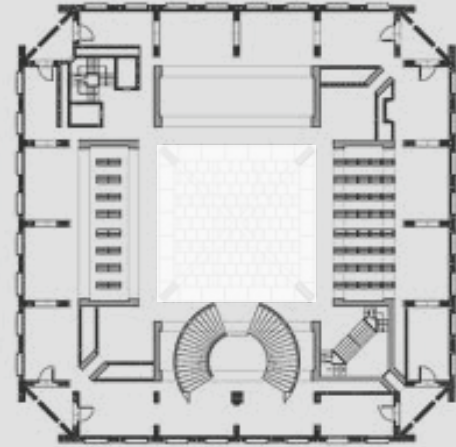
Louis Kahn designed this 250,000 volume library with brick on the exterior to match the Phillips Exeter Academy Campus.



For the interior, Kahn used a combination of natural elements and cast concrete consisting of equally contrasting geometry define the space. A large structure is expressed on the corners of the atrium space with columns that reach the ground floor, becoming disguised on the higher levels.

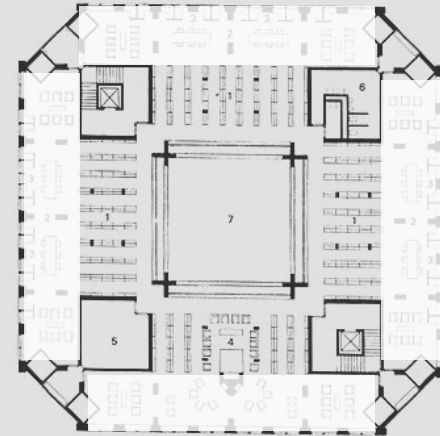
COMFORT

Kahn utilises a central- square atrium to create an ambient light. This light creates a level of comfort appropriate for effective studying or reading.



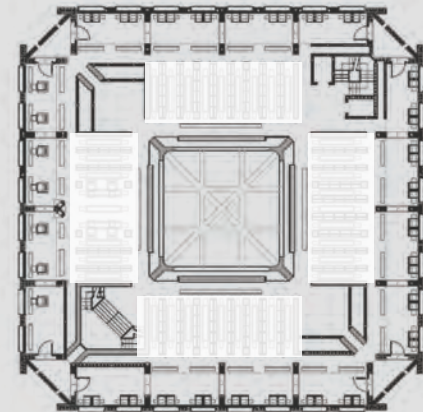
CONTROL

Private study areas are arranged on each floor around the exterior of the building creating a sense of organization. This organization makes the visitor feel as if they are in control, furthering their comfort.



COMPETENCE

The library stacks are nestled behind perfectly formed circle punctures, in the cast interior walls. This adds to the organization, and makes navigating the library much easier.



STUDY AREAS

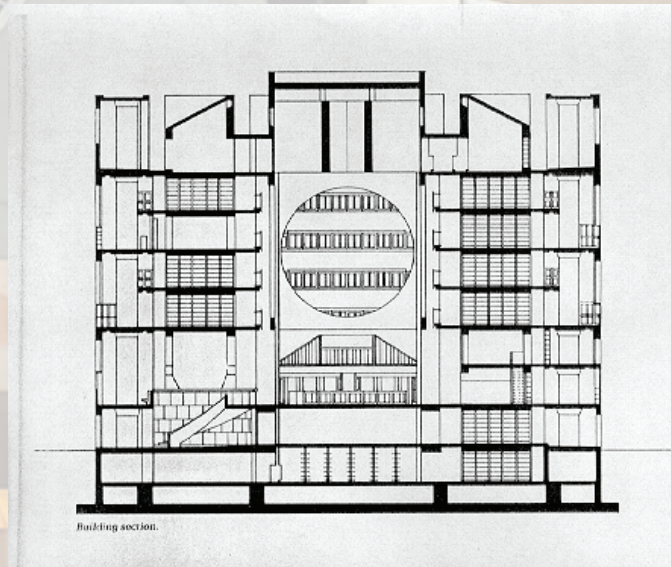
Separated by purpose for comfort and focus, Kahn used natural wood elements to compliment the lighting and additional library materials. This natural environment allows students to focus on their work while simultaneously appreciating their surroundings. The designated space for studying ensures that other library visitors will respect the purpose of the space so that everyone can be productive. For alternate reading experiences, there are small sitting areas placed strategically around the library for more relaxation. Once again, earthy colors are used to keep the environment neutral but comfortable.



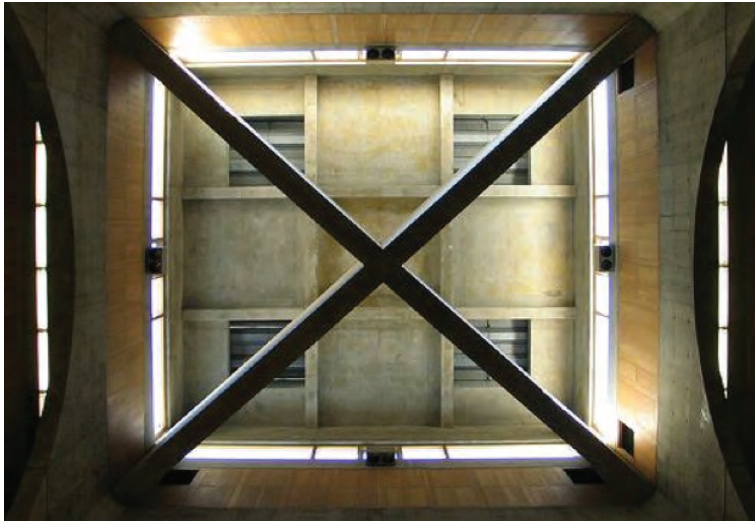


LIBRARY STACKS

Arranged strategically behind each of the circular openings of the atrium, the library stacks reveal the interior floorplan and circulation throughout the entire building. The view of the stacks on each level create a sense of unity on the different floors, as well as a strong indication of organization. Watching the people circulate through the books reveals the energy in an otherwise peaceful space.



AMBIENCE



THE ATRIUM

Kahn uses a 70 foot high atrium with clerestories which allow ample light from the expansive glazing on the north and west sides of the building. Similar to his design for the Kimball Art Museum, this technique creates ambience by use of diffuse light which bathes the interior .

