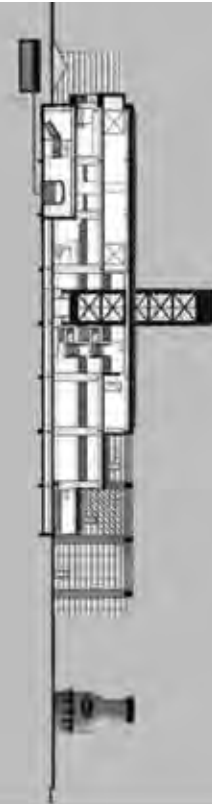
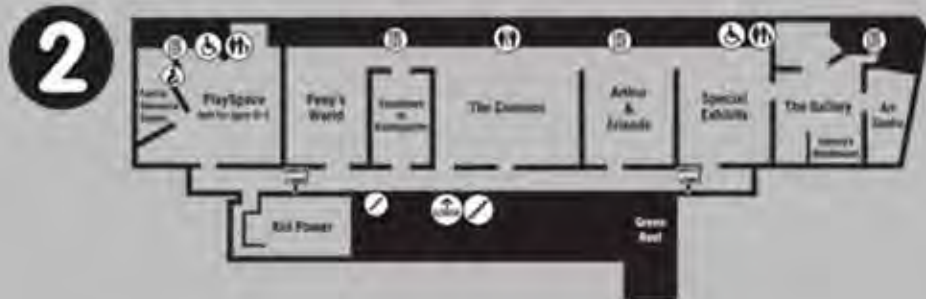


# BOSTON CHILDREN'S MUSEUM





PLANS SECTIONS



ELEVATION

# SITE & APPROACH

The site of the Museum is facing the Fort Point Channel. It has wonderful views of Boston and is very accessible to people within the city. Once parked follow the pathway which leads you to the museum. The path will take you past the outdoor cafe, milk bottle plaza, bleachers and gardens.



# EXTERIOR STRUCTURE

The exterior of the Boston Children's Museum was design to blur the lines of exterior and interior. The operable garage doors provide an experience for the occupants and blur the lines. The original warehouse build still stands as renovations provided an addition to compliment and contract the brick. The materials used were more industrial with glass and steel.

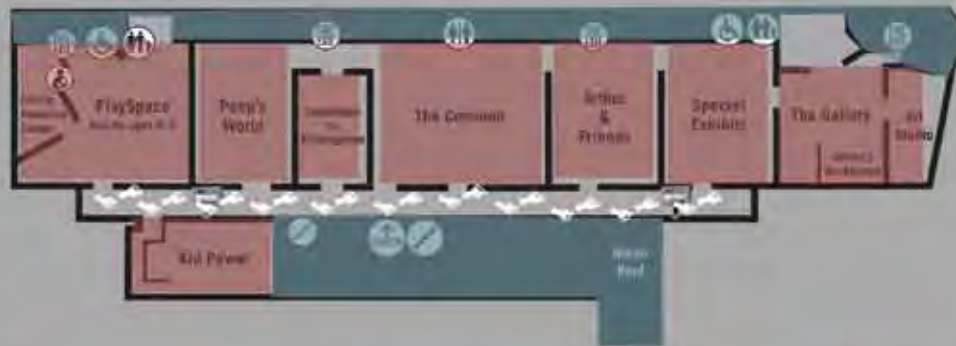


# CIRCULATION

3



2



1



The graph to the left is a representation of the private vs. public zones in the Children's Museum. The red areas indicate the public zone. The blue areas indicate the private zones. The white feet are icons of circulation through the spaces.

